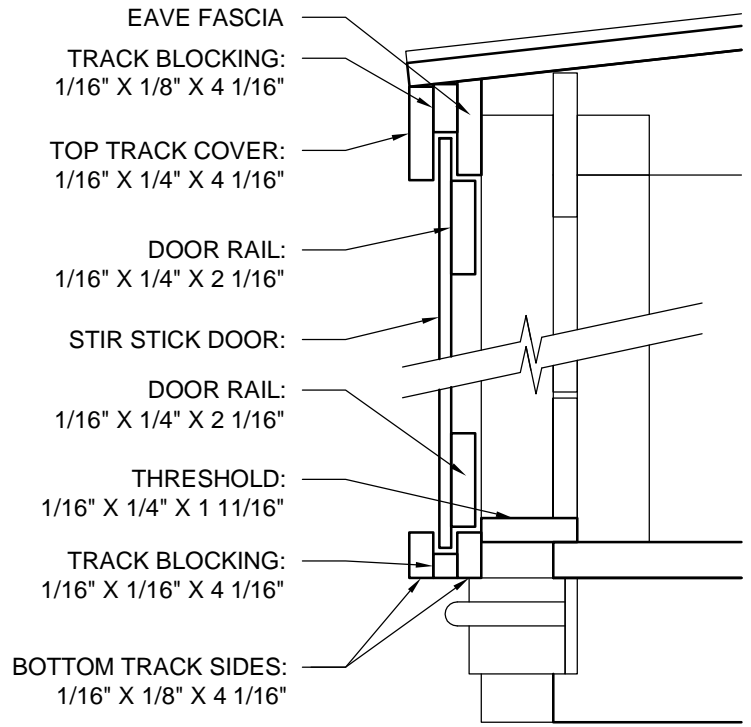


DOOR EXTERIOR

DOOR INTERIOR

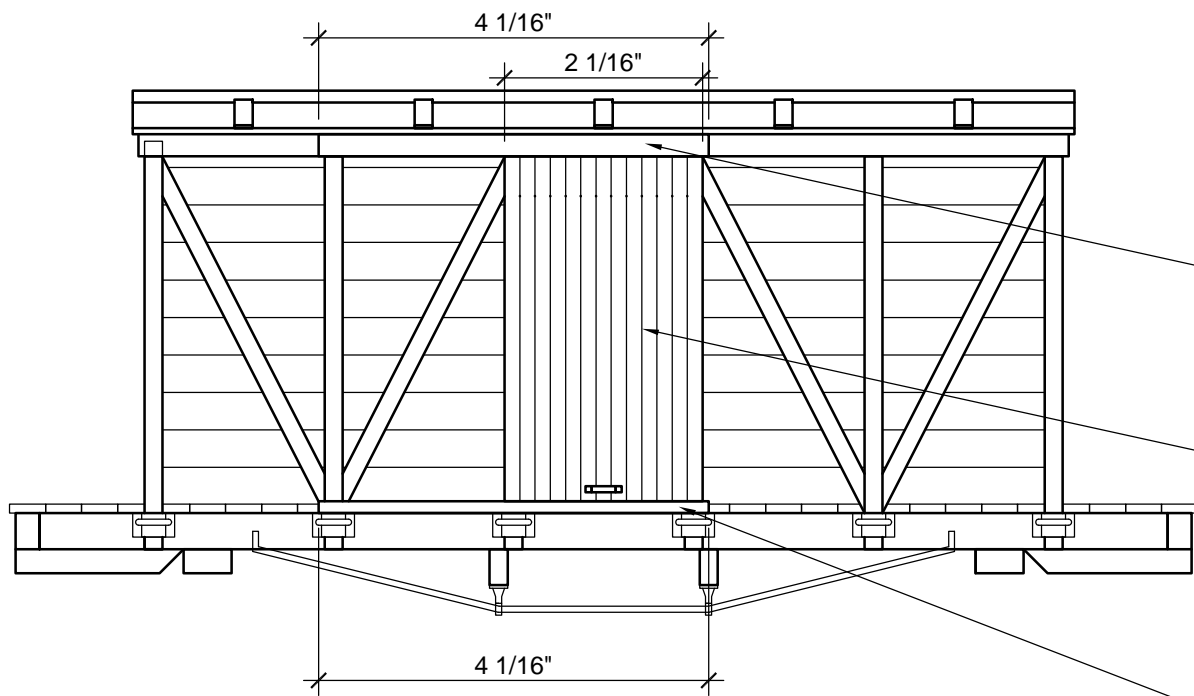
SCALE: 6" = 1'-0"

SCALE: 6" = 1'-0"



DOOR - HEAD AND SILL DETAIL

SCALE: FOUR TIMES ACTUAL SIZE



SIDE VIEW - BOX CAR

SCALE: 6" = 1'-0"

UPPER DOOR TRACK ASSEMBLY:

- (1) 1/16" X 1/8" X 4 1/16"
 - (1) 1/16" X 1/4" X 4 1/16"
- GLUE TO EAVE FASCIA

SLIDING DOOR:
(13) STIR STICKS

UPPER AND LOWER DOOR TRACKS MUST BE PARALLEL WITH EACH OTHER TO ASSURE GOOD OPERATION.

LOWER DOOR TRACK ASSEMBLY:

- (1) 1/16" X 1/16" X 4 1/16"
 - (2) 1/16" X 1/8" X 4 1/16"
- GLUE TO VERTICAL BRACING

DOOR:

DOOR MUST BE CONSTRUCTED FLAT AND SQUARE. ASSEMBLE AND GLUE LOWER TRACK FIRST AND ALLOW TO DRY. TEST FIT ASSEMBLED DOOR AND SAND TOP AND BOTTOM OF DOOR AS NECESSARY FOR SMOOTH ACTION. SANDING OF TOP AND BOTTOM OF DOOR RAIL MAY BE NECESSARY AS WELL. WHEN DOOR MOVES FREELY. ASSEMBLE AND GLUE TOP TRACK MAKING SURE AGAIN THE DOOR MOVES FREELY.