

Build a 1:22.5-scale warehouse with loading dock

by Ted Stinson | Wiscasset, Maine

This is a small warehouse and loading dock with an attached office building, modeled in 1:22.5 scale. I have reached the age where building a railroad outdoors would be very difficult—getting down on hands and knees is very nearly impossible. However, building a model railroad at table height is quite doable and that is where this building comes in. It is actually about half of a building, meant to be put in a corner with a single siding.

Since the structure involves two buildings, I have drawn them as separate items. The drawings presented here show the warehouse with the loading dock. You may not wish to build the office so this structure can be buttressed up to an office that is painted on your backdrop.

Construction

Refer to the **Assembly Detail**. Begin with the foundation. Using $\frac{3}{4}$ " x $1\frac{1}{2}$ " pine, make the rectangular concrete base. This should be painted concrete color. Add discolorations as you wish. Glue the $\frac{5}{16}$ "-square stock around the top edge. This can be left natural. Now plank the top surface with $\frac{3}{32}$ " x $\frac{1}{2}$ " natural-pine stock. This should overlap the front edge about $\frac{1}{8}$ ".

Now make the substructure of the warehouse from $\frac{1}{8}$ " plywood and stripwood. Add the $\frac{1}{16}$ "-thick battens and door frames. Add the roof and the $\frac{1}{4}$ " x $\frac{1}{4}$ " fascia, which goes around the front and exposed side. Paint or stain this a very light gray. The doors can now be assembled and painted as you like (I prefer dark green). Finally, the doors can be glued in place.

Final details can now be added. First, do the chimney. Cut a piece of $\frac{3}{4}$ "-square stock to shape. Add the $\frac{1}{16}$ " x $\frac{1}{8}$ " stripwood around the top. Paint this a concrete color. Make the individual bricks from brick-red construction paper and glue them in place. Seal with a coat of flat varnish. The section at the base should be covered with thin cardstock (paint-

ed the color of lead) to represent flashing.

The roofing can be represented by $1\frac{1}{4}$ "-wide strips of 220-grit emery paper, glued in place with a $\frac{1}{8}$ " overlap. Now cut an opening for the chimney and glue that in place.

At this point your warehouse is finished. Next time, the office building.

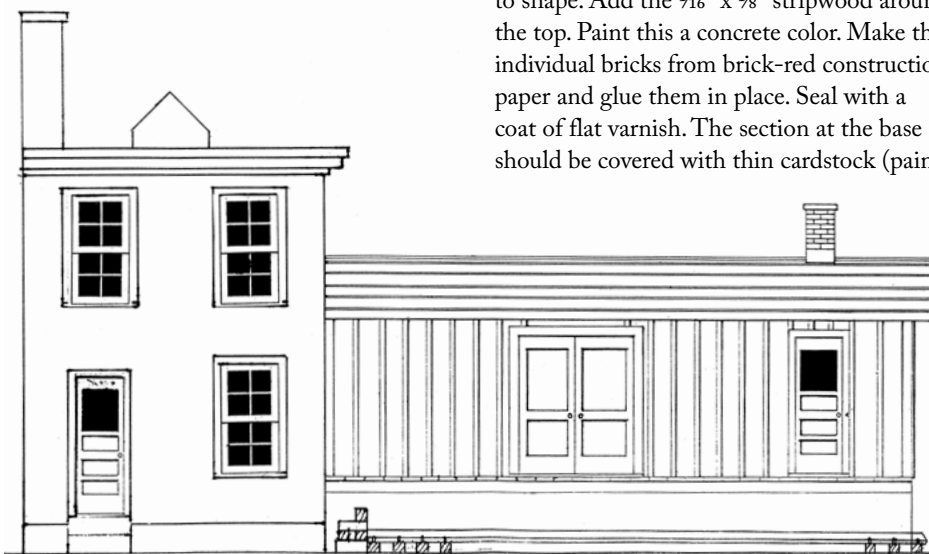
* * *

This is an online supplement to the February 2011 issue of *Garden Railways* magazine. To purchase previously published paper plans, see the list of those available at www.sidestreet.info

A kit for the warehouse is available from Northeast Narrow Gauge for \$50 + \$7 s&th. Order from Northeast Narrow Gauge, PO Box 191, Wiscasset ME 04578. Web site: www.nemodel.com

* * *

© 2011 by *Garden Railways* and Northeast Narrow Gauge. These drawings may be reproduced by individual modelers for their own personal use. Copying for any commercial use or for distribution is prohibited without written consent from the publisher.

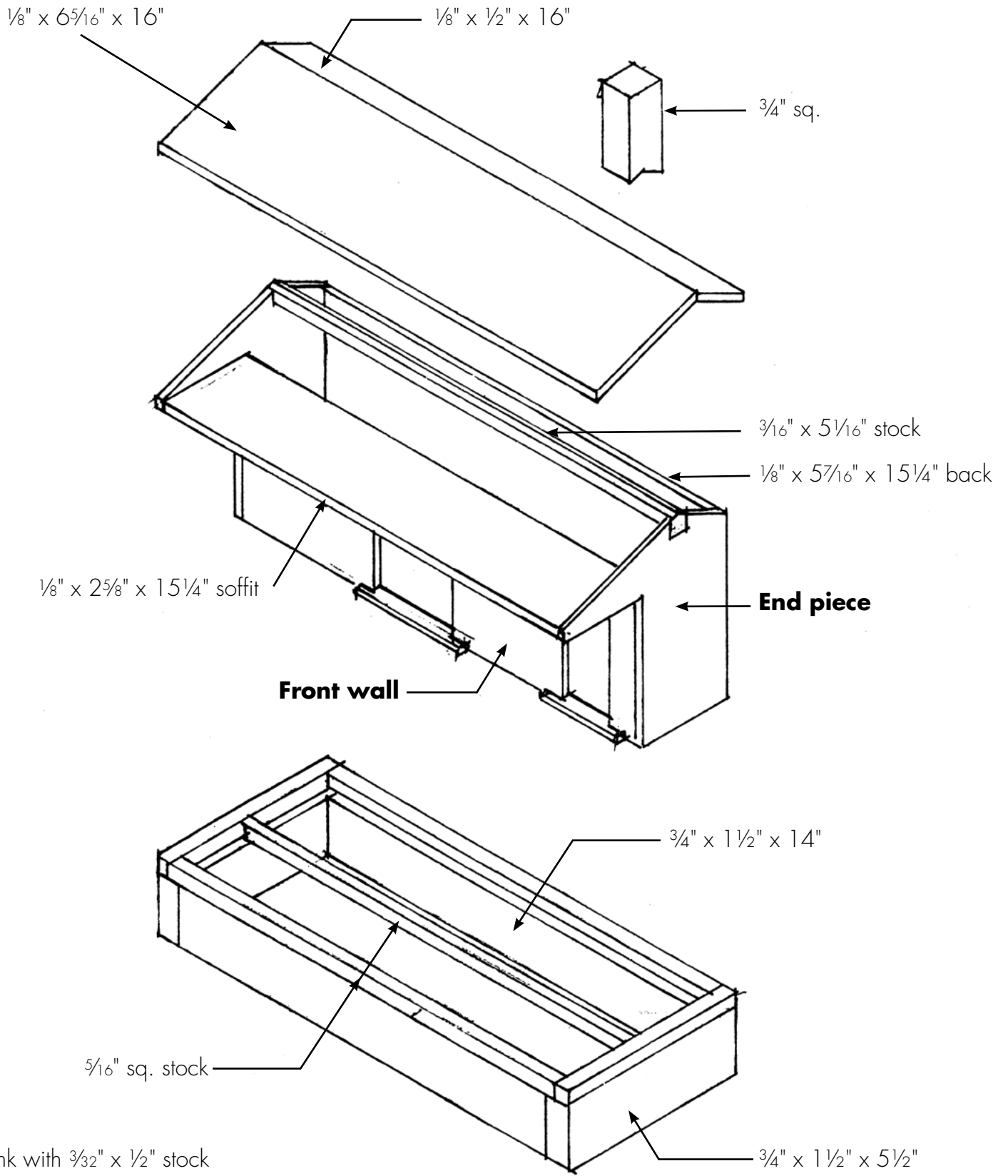


Entire building includes office and loading dock

Are you working in a different scale?

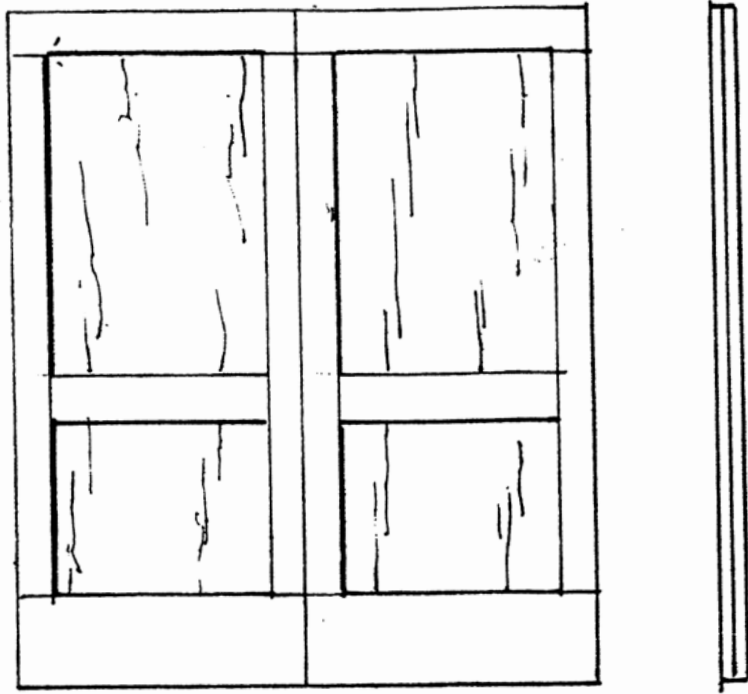
1:32 scale	Reduce these drawings to 70.3%
1:29 scale	Reduce these drawings to 77.6%
1:24 scale	Reduce these drawings to 93.8%
1:20.3 scale	Enlarge these drawings to 110.8%
1:19 (16mm) scale	Enlarge these drawings to 118.4%
1:13.7 (7/8") scale	Enlarge these drawings to 164.2%

Assembly detail



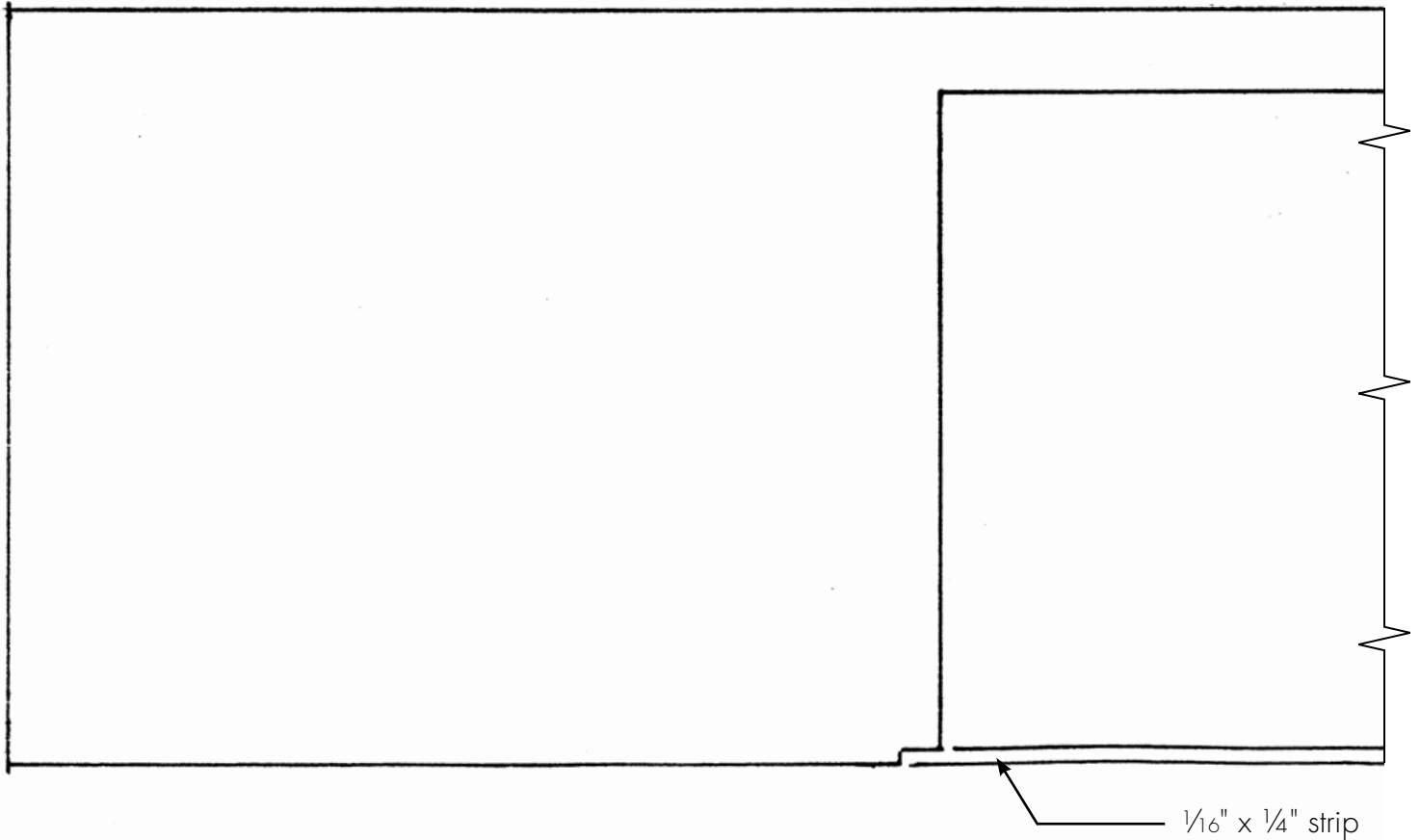
Freight door

Make from strip and
 $\frac{1}{16}$ " x 3" x $3\frac{1}{2}$ " wood



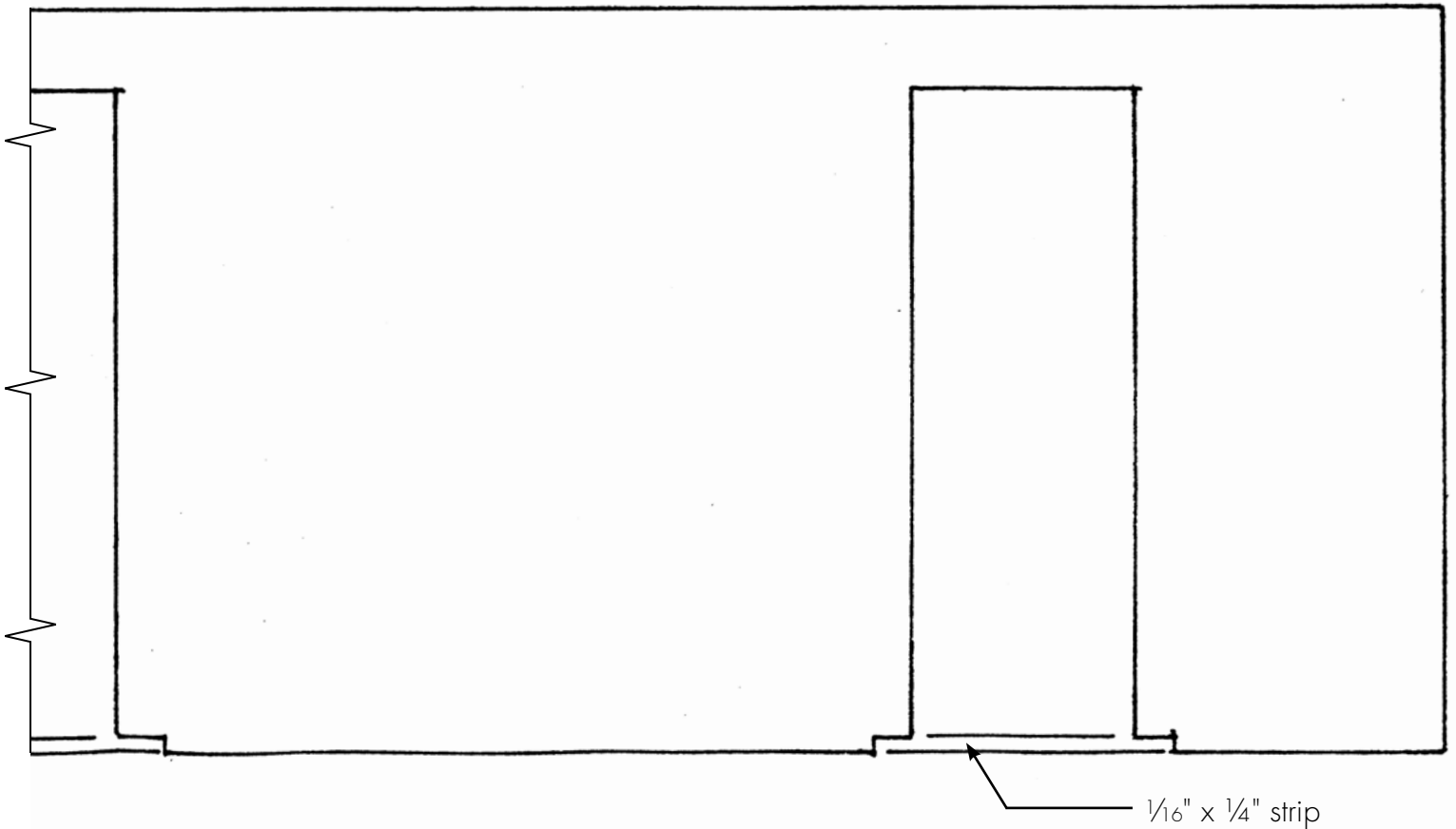
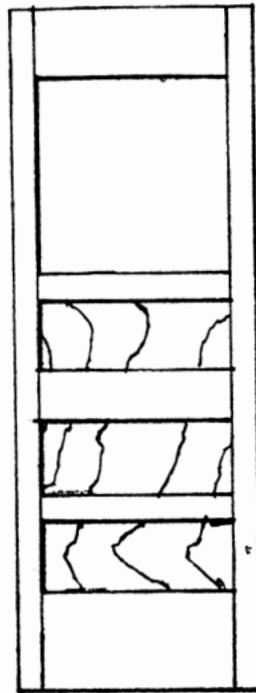
Front wall

Make from $\frac{1}{8}$ " plywood $4\frac{1}{16}$ " wide x $15\frac{1}{4}$ " long

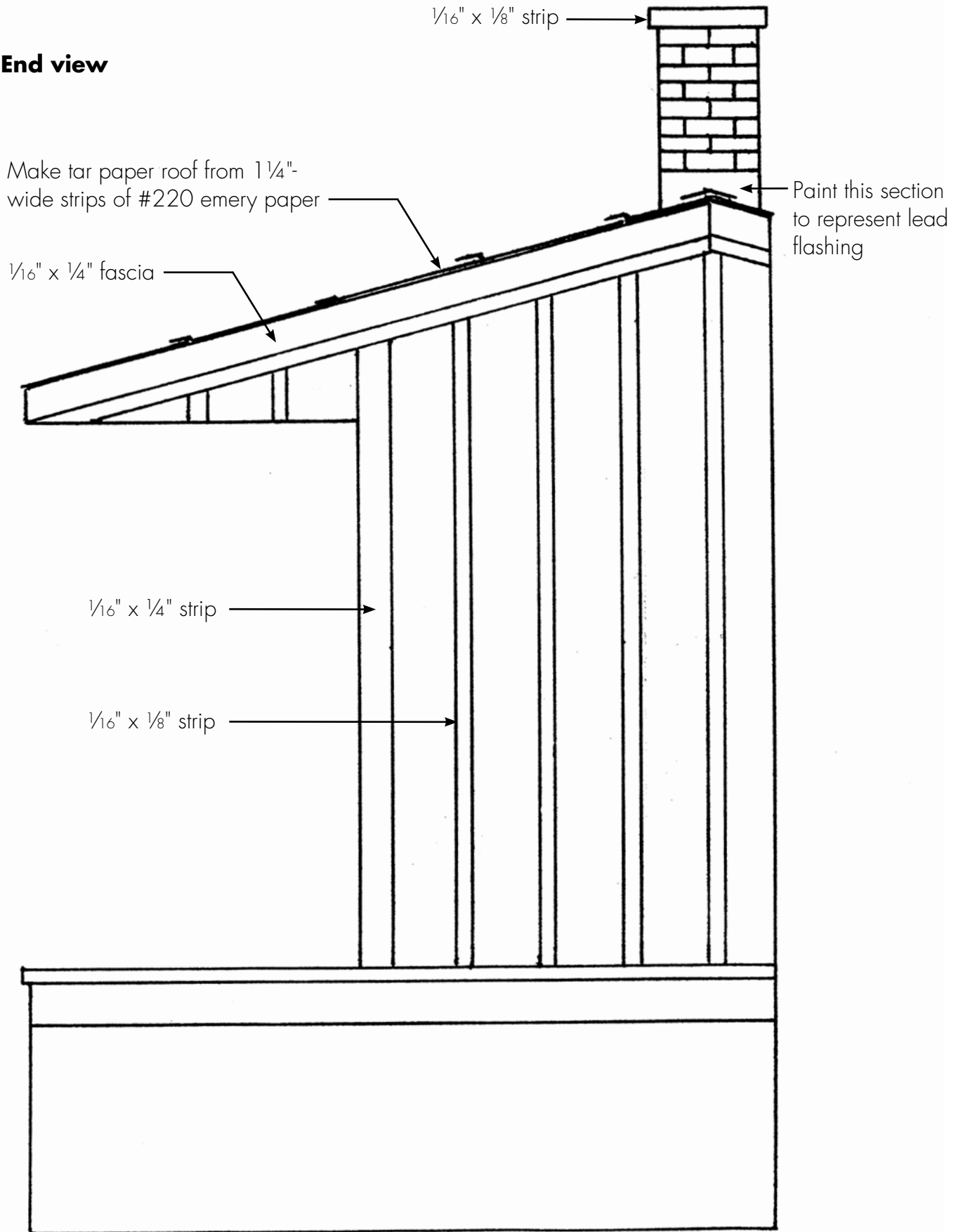


Office door

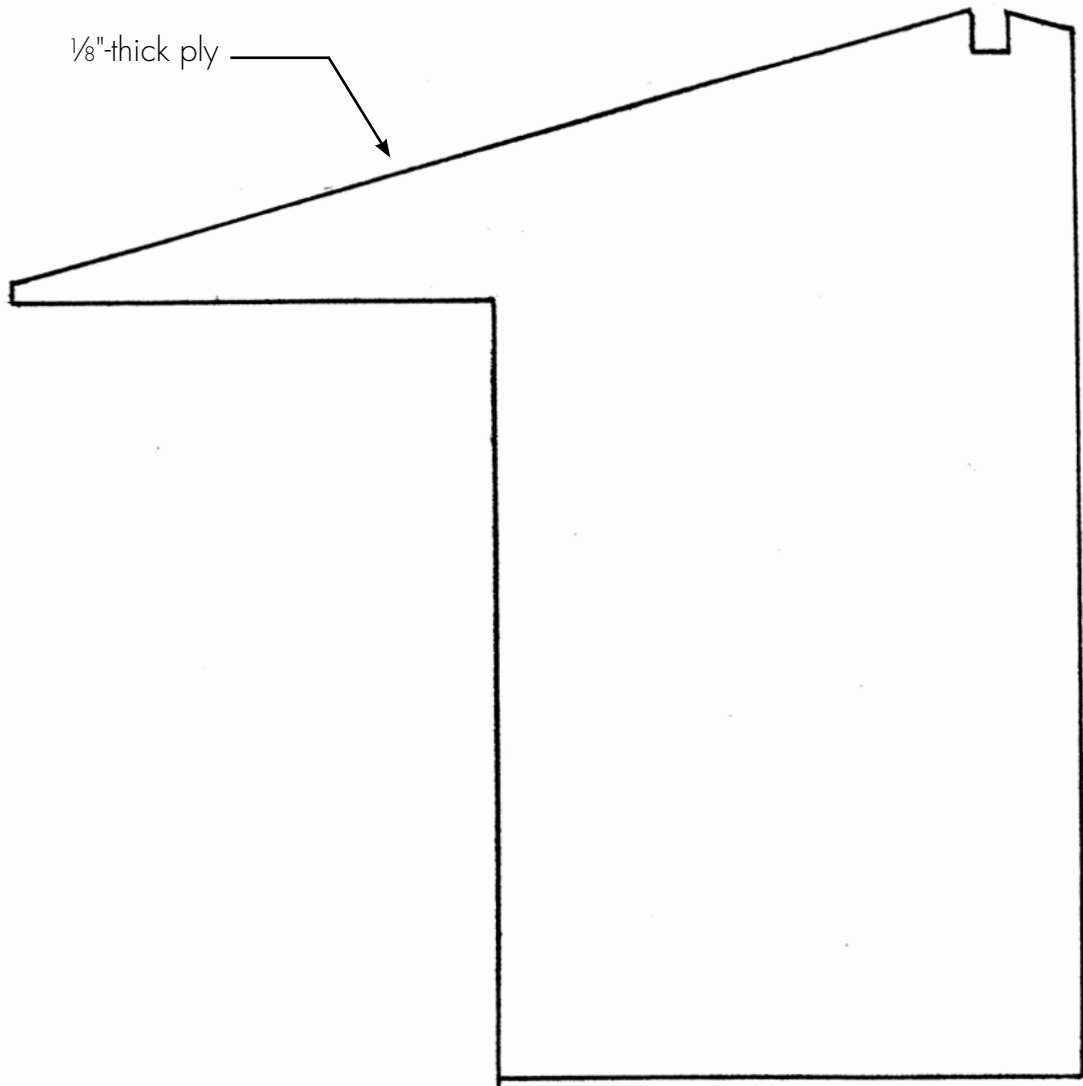
Make from strip and
 $\frac{1}{32}$ " x $1\frac{1}{4}$ " x $2\frac{1}{16}$ " ply



End view



End piece



Front view

Loading dock

$\frac{1}{16}$ " x $\frac{1}{4}$ " fascia

