

# Brick and frame signal tower in 1:29 scale

Drawings by Laurent S. Smith

Reproduced from the January 1956 issue of *Model Railroader*

Signal towers were used on most standard-gauge railroads of any size. They came in a vast array of different designs and were made of a variety of materials. The drawings here portray a tower made, unusually, of both brick and frame construction.



HO-scale model shown.

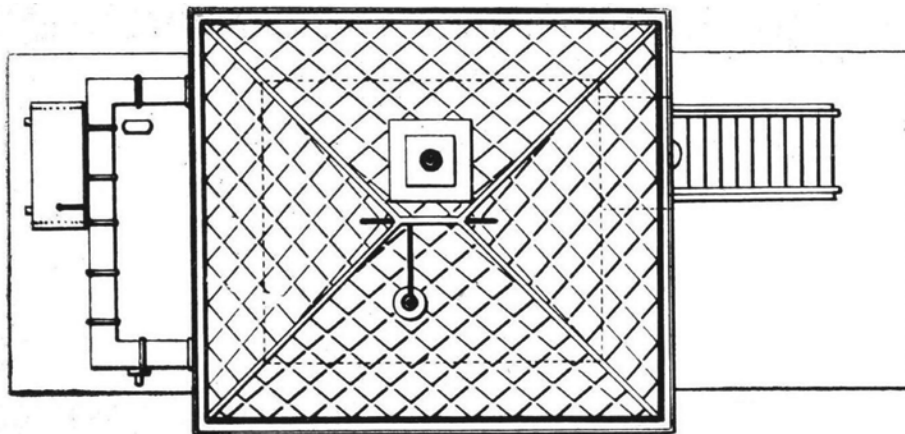
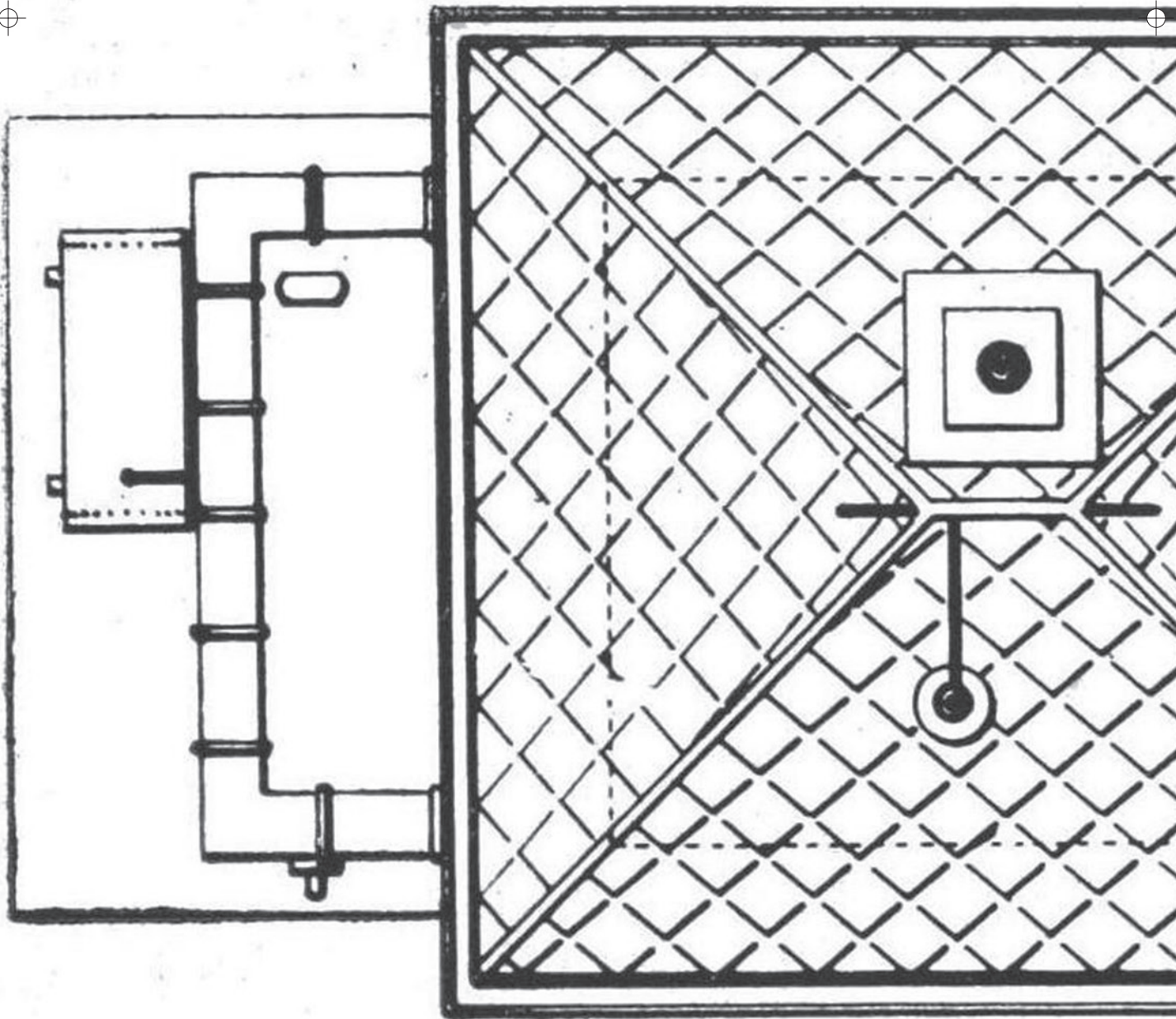
## Are you working in a different scale?

If you're not working in 1:29 scale, print  
the drawings out at the percentage  
given below for your scale.

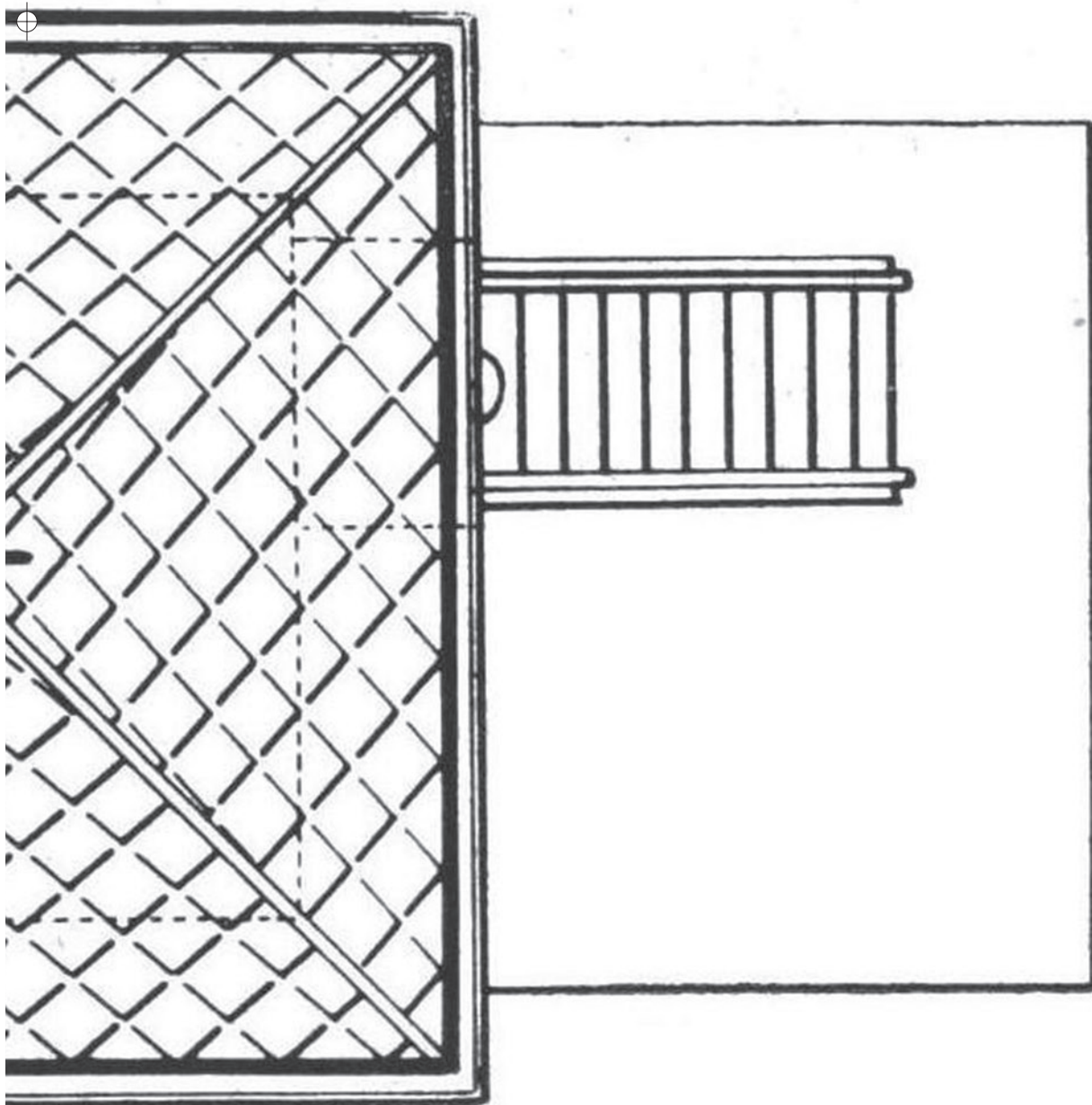
1:32 scale	91%
1:24 scale	121%
1:22.5 scale	129%
1:20.3 scale	143%
1:19 scale	153%
1:13.7 scale	212%

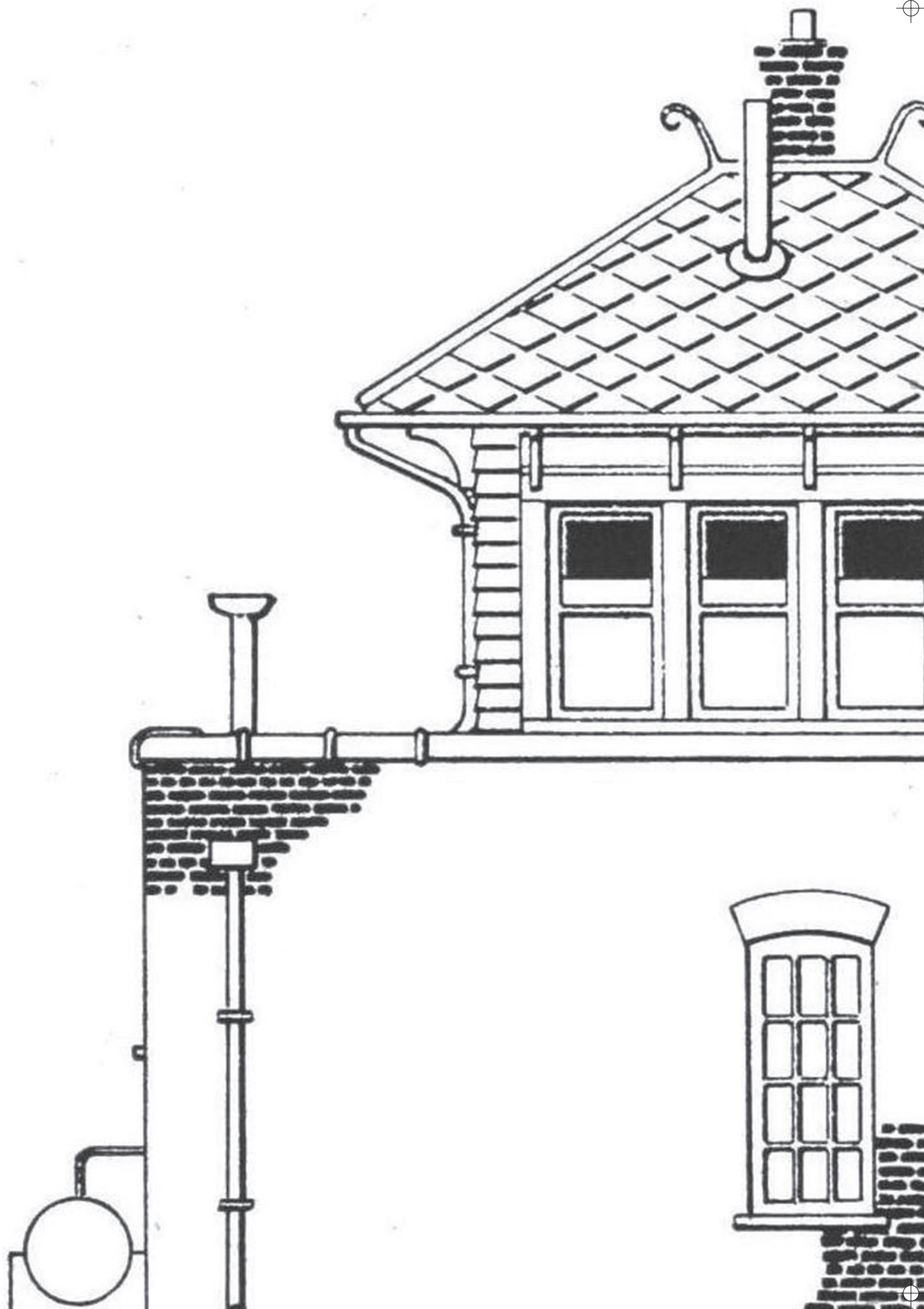
**Drawings are full size for 1:29 scale**

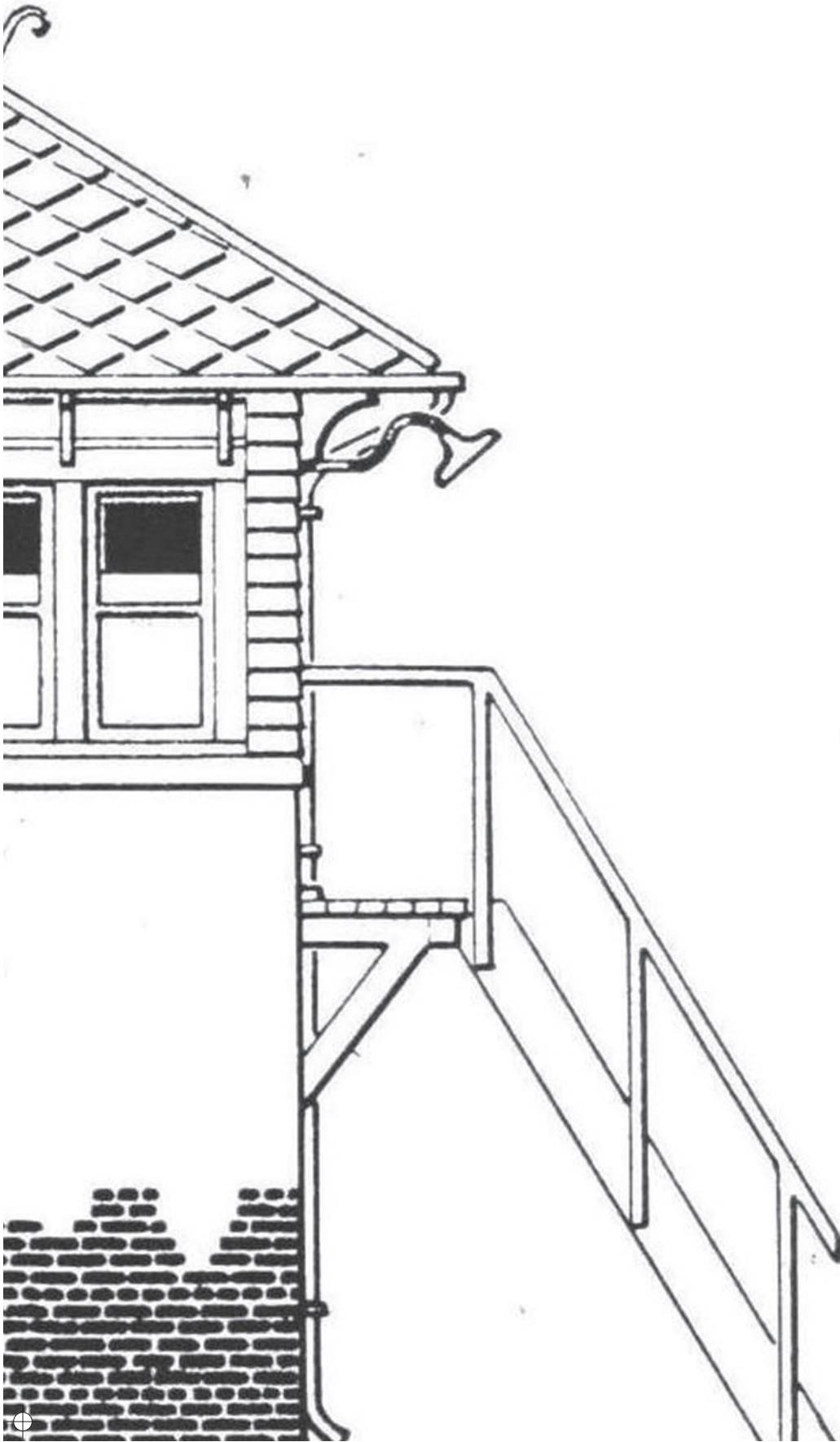
© *Garden Railways* and *Model Railroader*. These drawings may be reproduced by individual modelers for their own personal use. Copying for any commercial use or for distribution is prohibited without written consent from the publisher.











E













