

# A pump house in 1:29 scale

Drawings by Bill Stokes

Reproduced from the November 1960 issue of *Model Railroader*

**P**ump houses were necessary parts of both steam and diesel railroads. They were used to pump water to water tanks or fuel oil to holding tanks. They were sometimes placed near rivers or streams, as much as a mile from the water tank (so one could be plausibly placed almost anywhere convenient to your rail

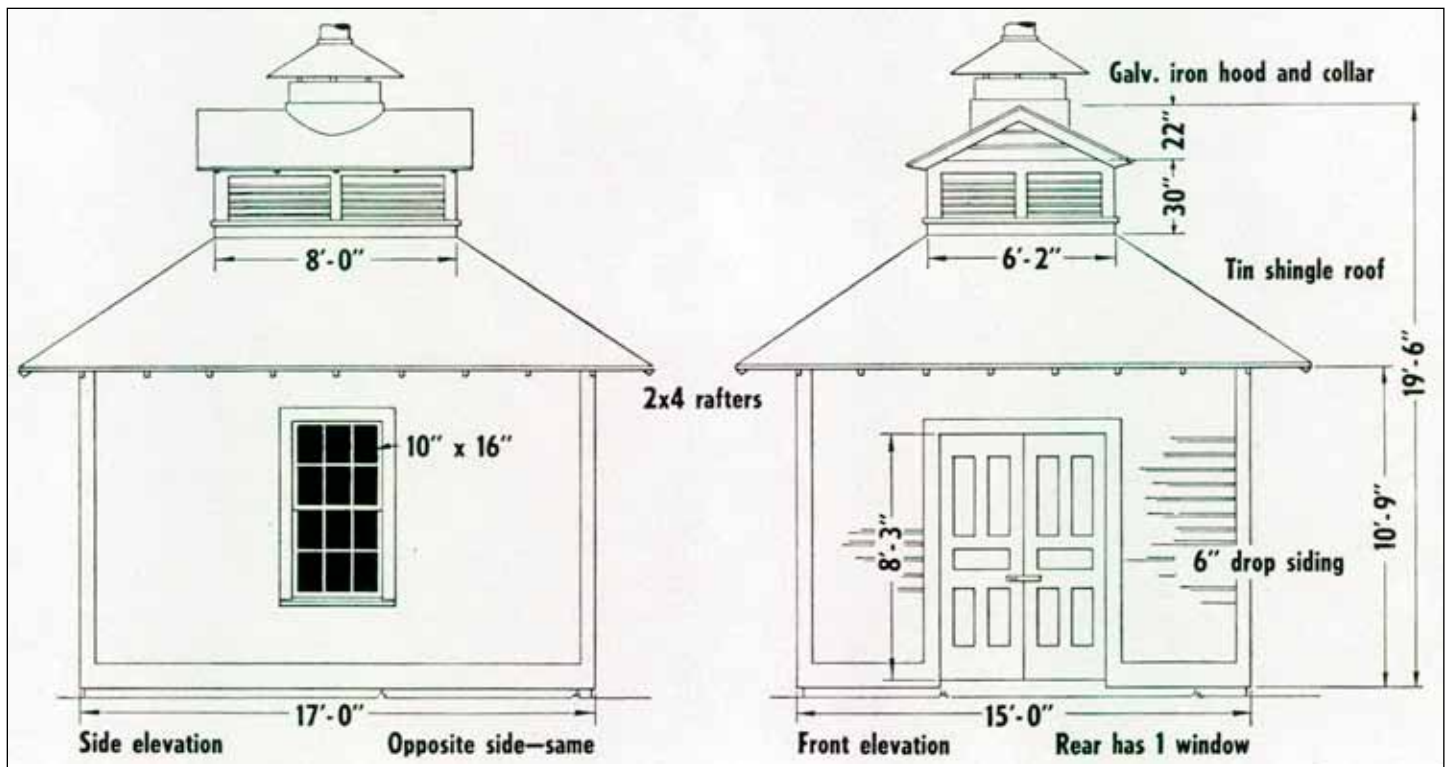
yard or locomotive facility).

These drawings are for a small pump house on the Southern Railway. It was built in 1916 and housed a steam-powered pump. Suggested color scheme as follows: roof, black; trim, white; siding above sills, yellow; siding below sills, medium green.

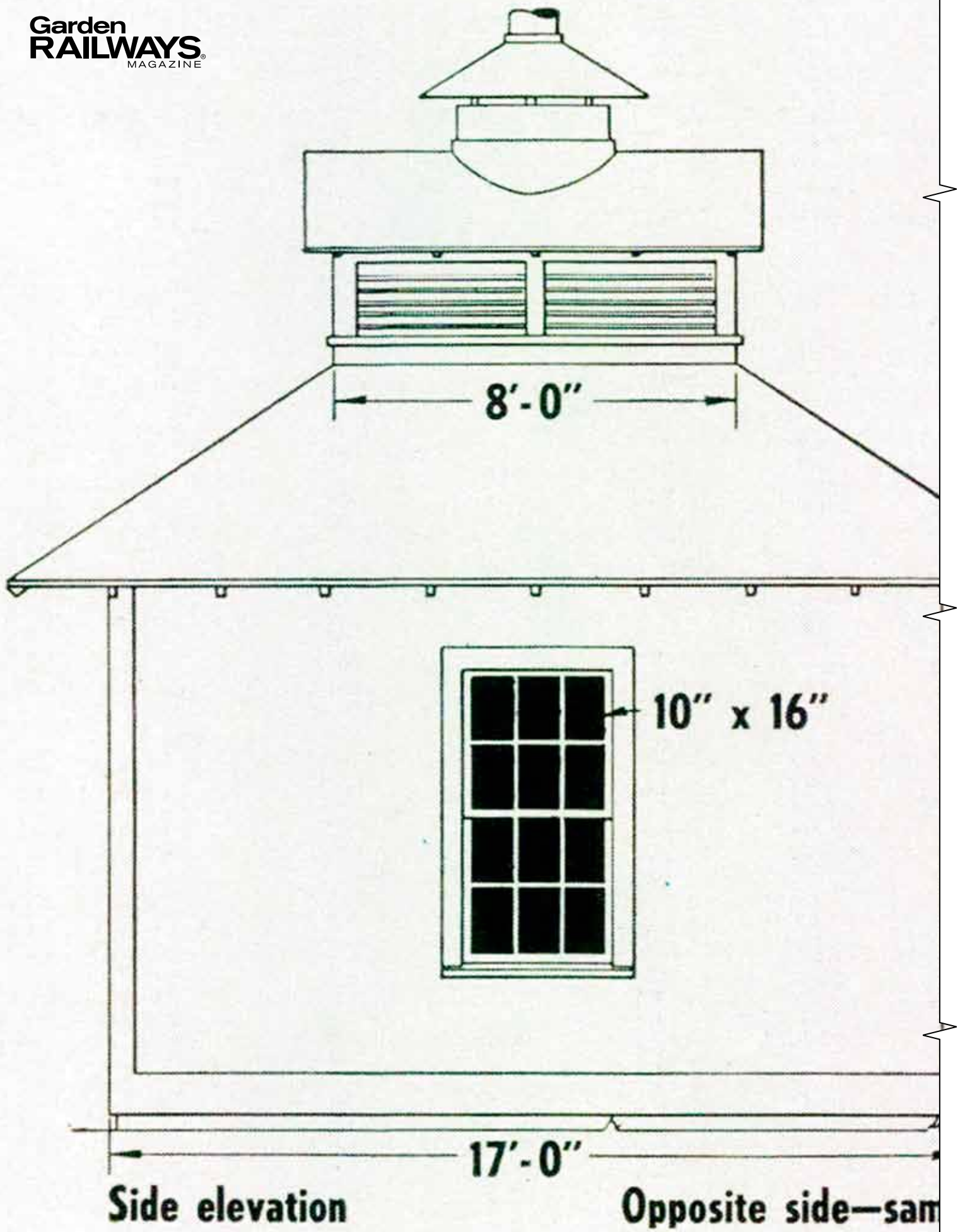
## Are you working in a different scale?

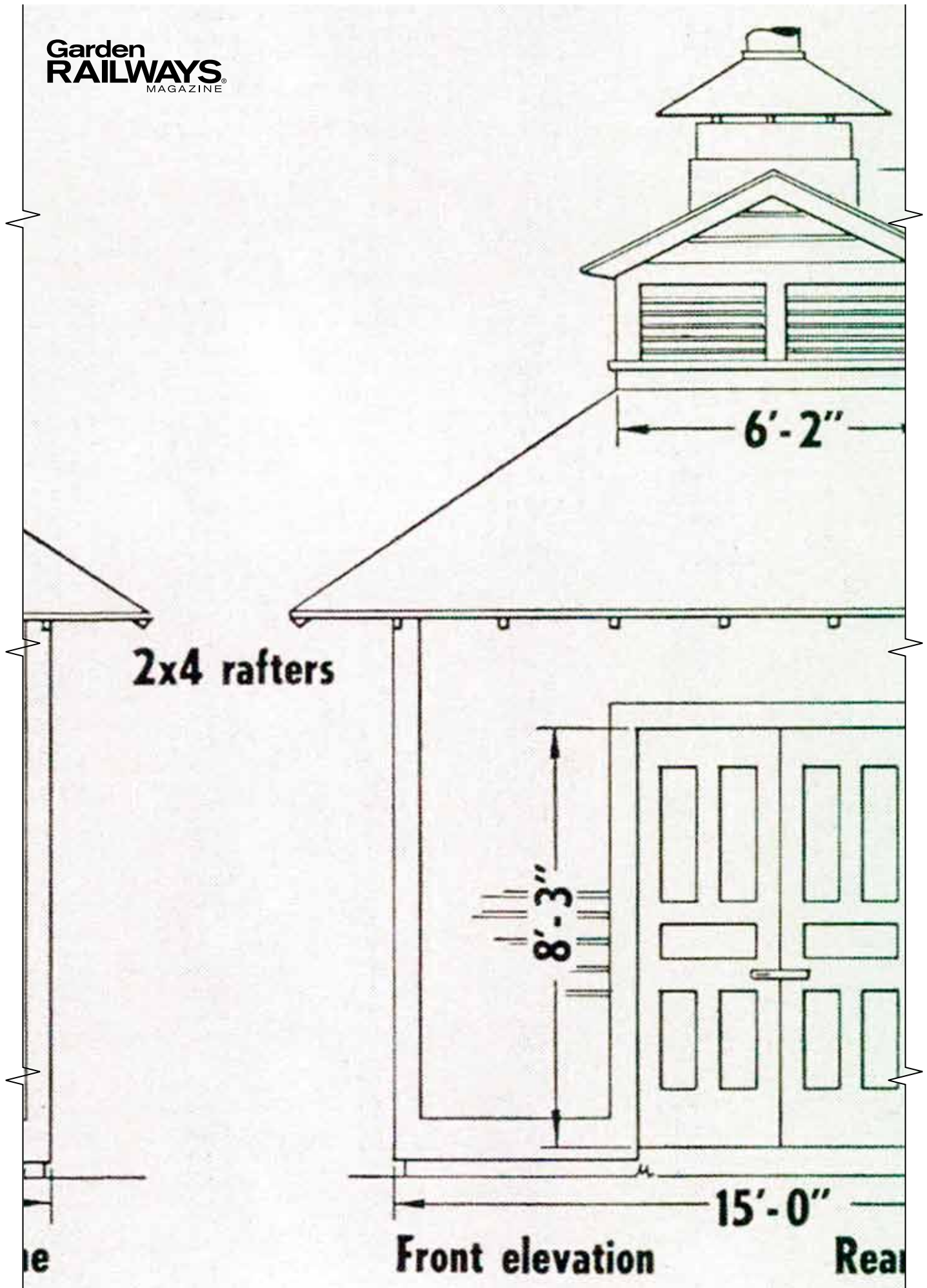
If you're not working in 1:29 scale, print the drawings out at the percentage given below for your scale.

1:32 scale	91%
1:24 scale	121%
1:22.5 scale	129%
1:20.3 scale	143%
1:19 scale	153%
1:13.7 scale	212%



© *Garden Railways* and *Model Railroader*. These drawings may be reproduced by individual modelers for their own personal use. Copying for any commercial use or for distribution is prohibited without written consent from the publisher.





**2x4 rafters**

**6'-2"**

**8'-3"**

**15'-0"**

**Front elevation**

**Rear**

