

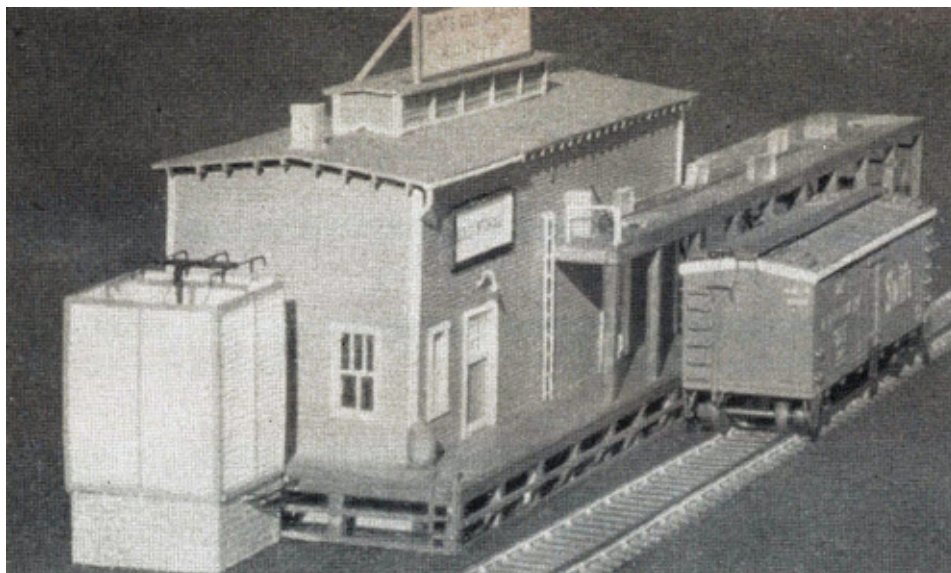
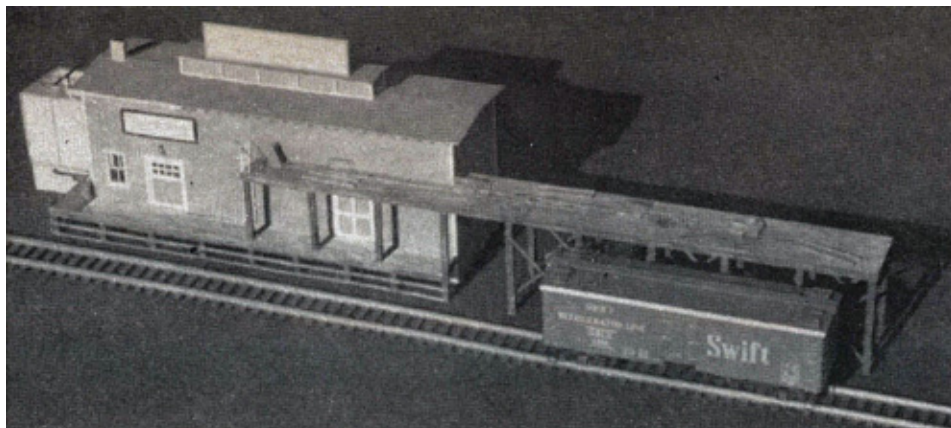
An icing station in 1:29 scale

Drawings by W.W. Loveland Jr.

Reproduced from the October 1956 issue of *Model Railroader*

Icing stations were used in the days when refrigerator cars were kept cool by carrying actual ice in special bunkers at the ends of the cars. Long lines of reefers would arrive at icing stations, some of which were huge and occupied large tracts of real estate. Workers would open the hatches atop the cars and, from elevated platforms, fill the cars' bunkers with blocks of ice.

The station depicted here, which is drawn from a full-size facility on the New York Central Railroad at Savannah, New York, is considerably smaller than most, and could make an interesting addition to many garden railways.



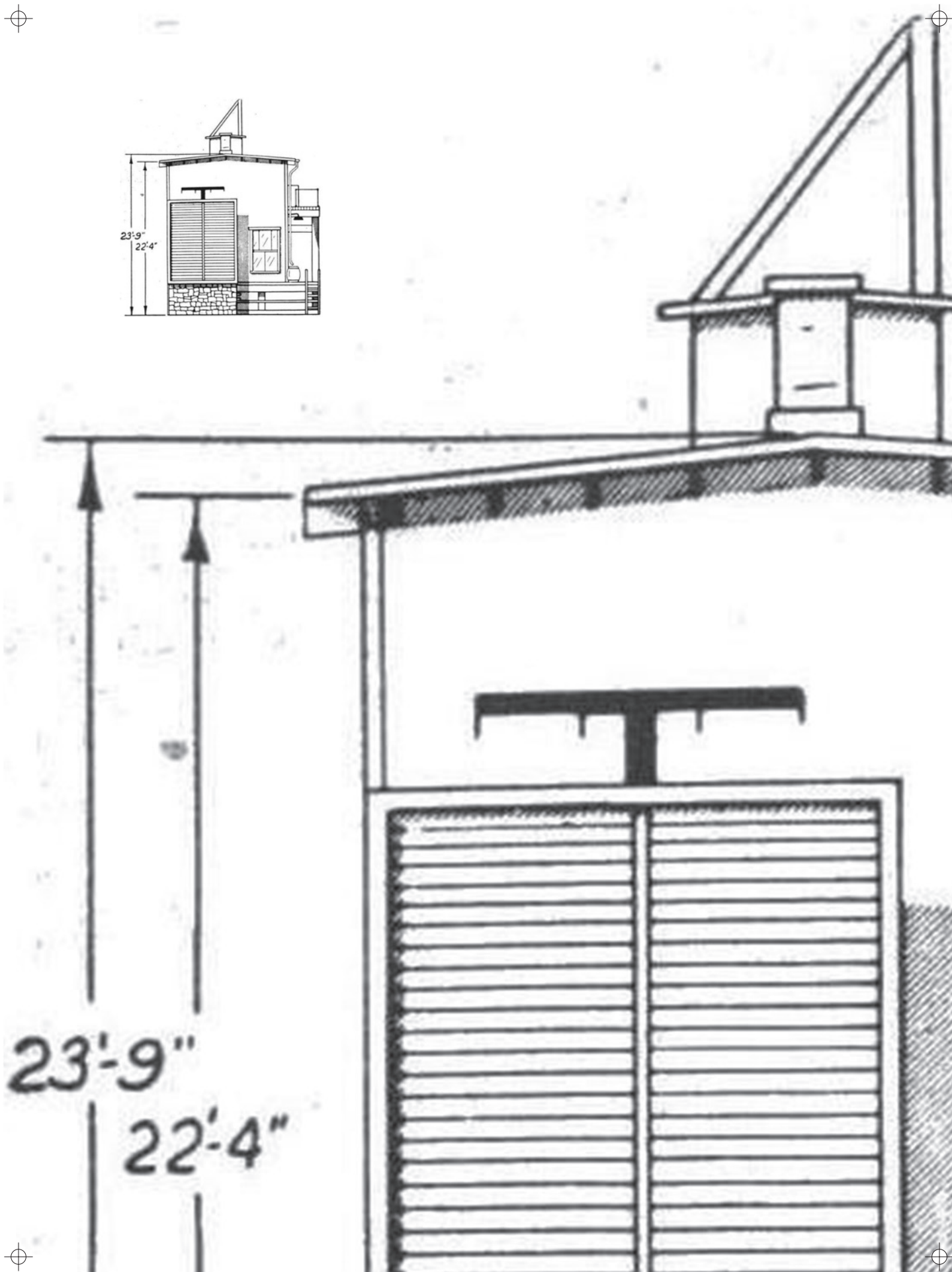
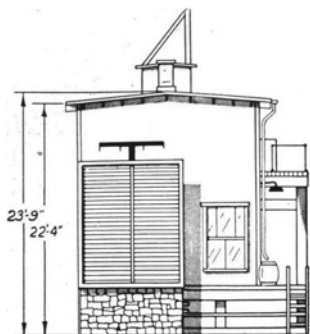
Are you working in a different scale?

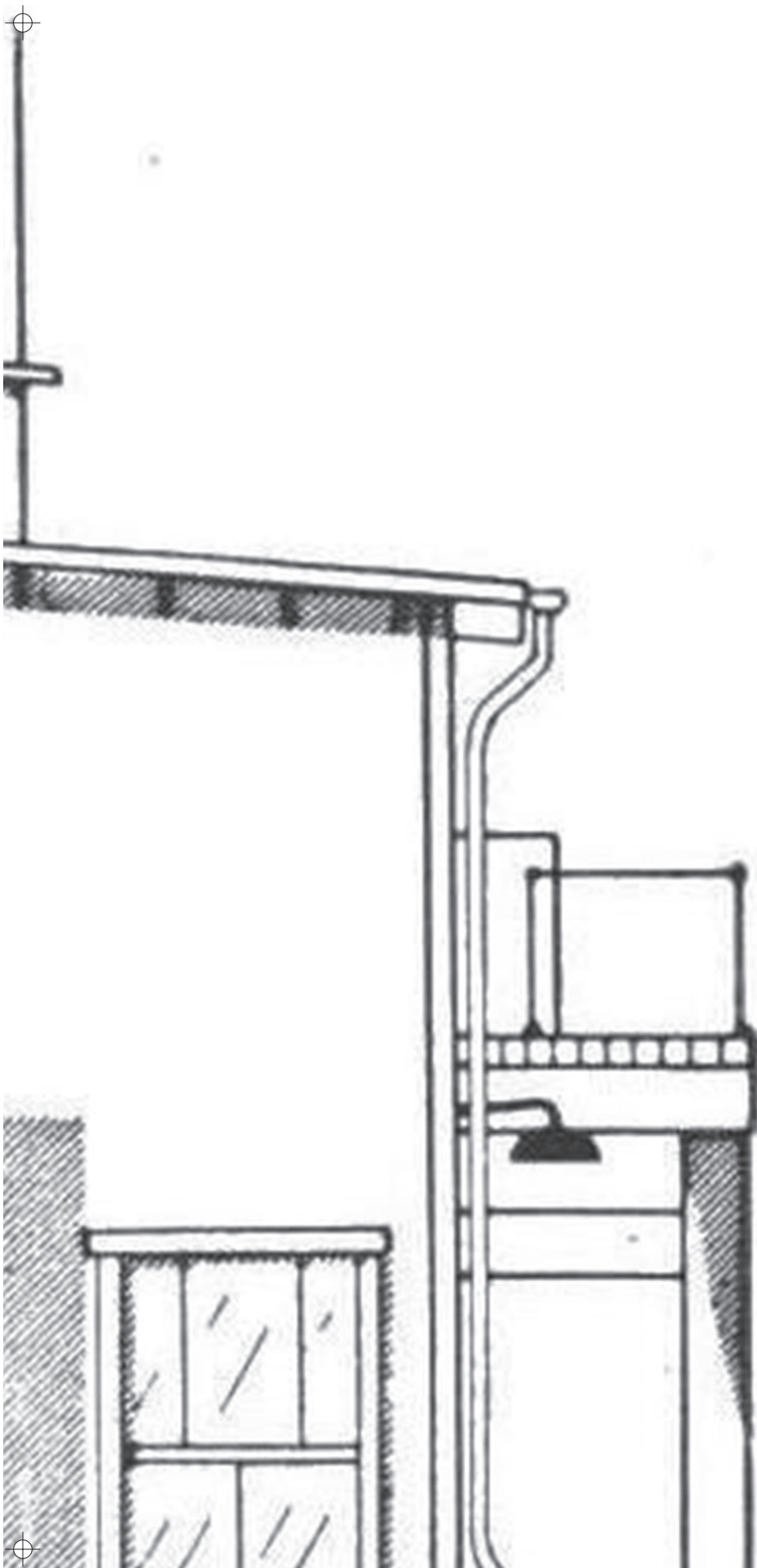
If you're not working in 1:29 scale, print the drawings out at the percentage given below for your scale.

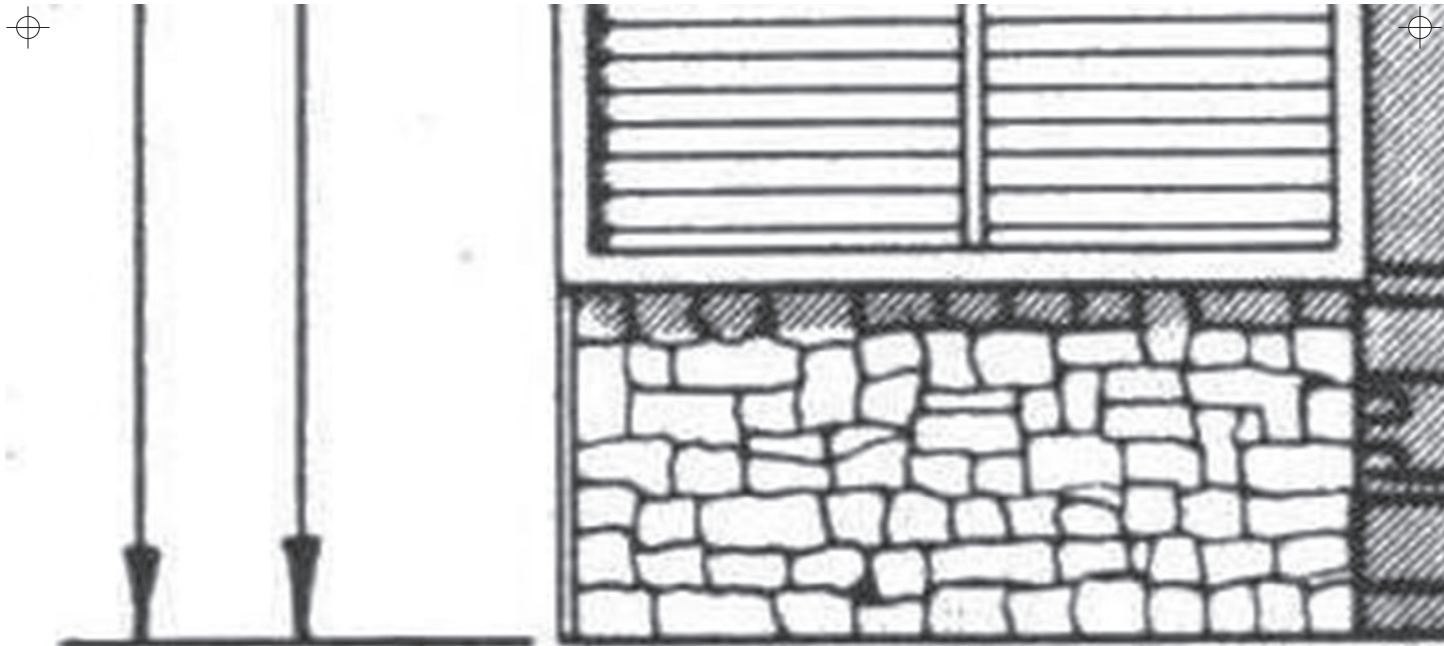
1:32 scale	91%
1:24 scale	121%
1:22.5 scale	129%
1:20.3 scale	143%
1:19 scale	153%
1:13.7 scale	212%

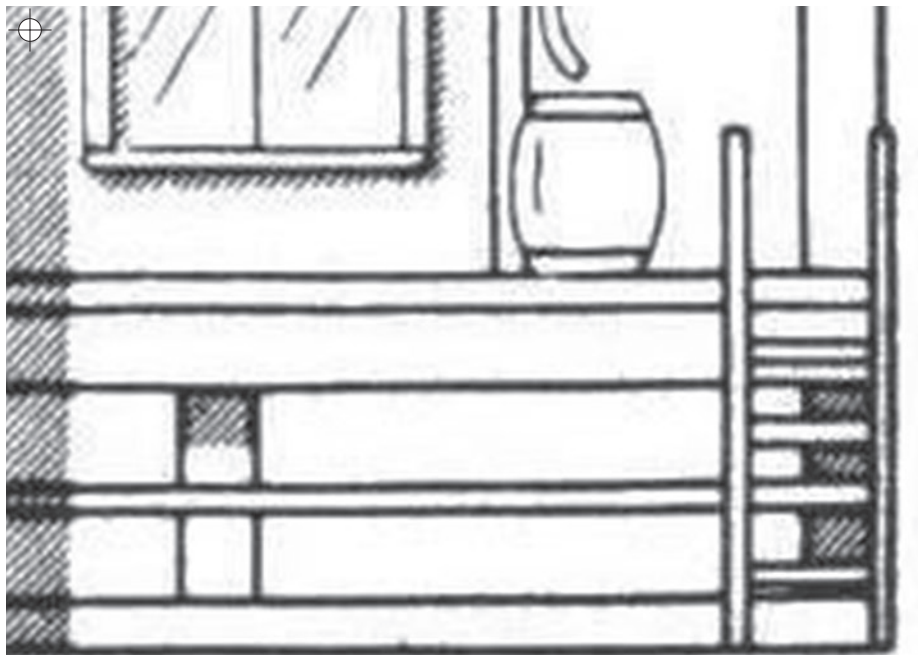
Drawings are full size for 1:29 scale

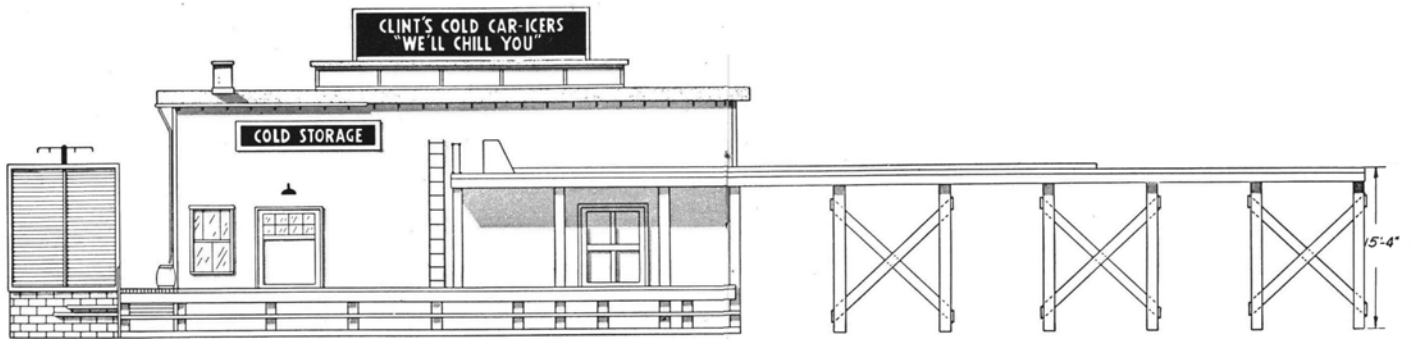
© *Garden Railways* and *Model Railroader*. These drawings may be reproduced by individual modelers for their own personal use. Copying for any commercial use or for distribution is prohibited without written consent from the publisher.

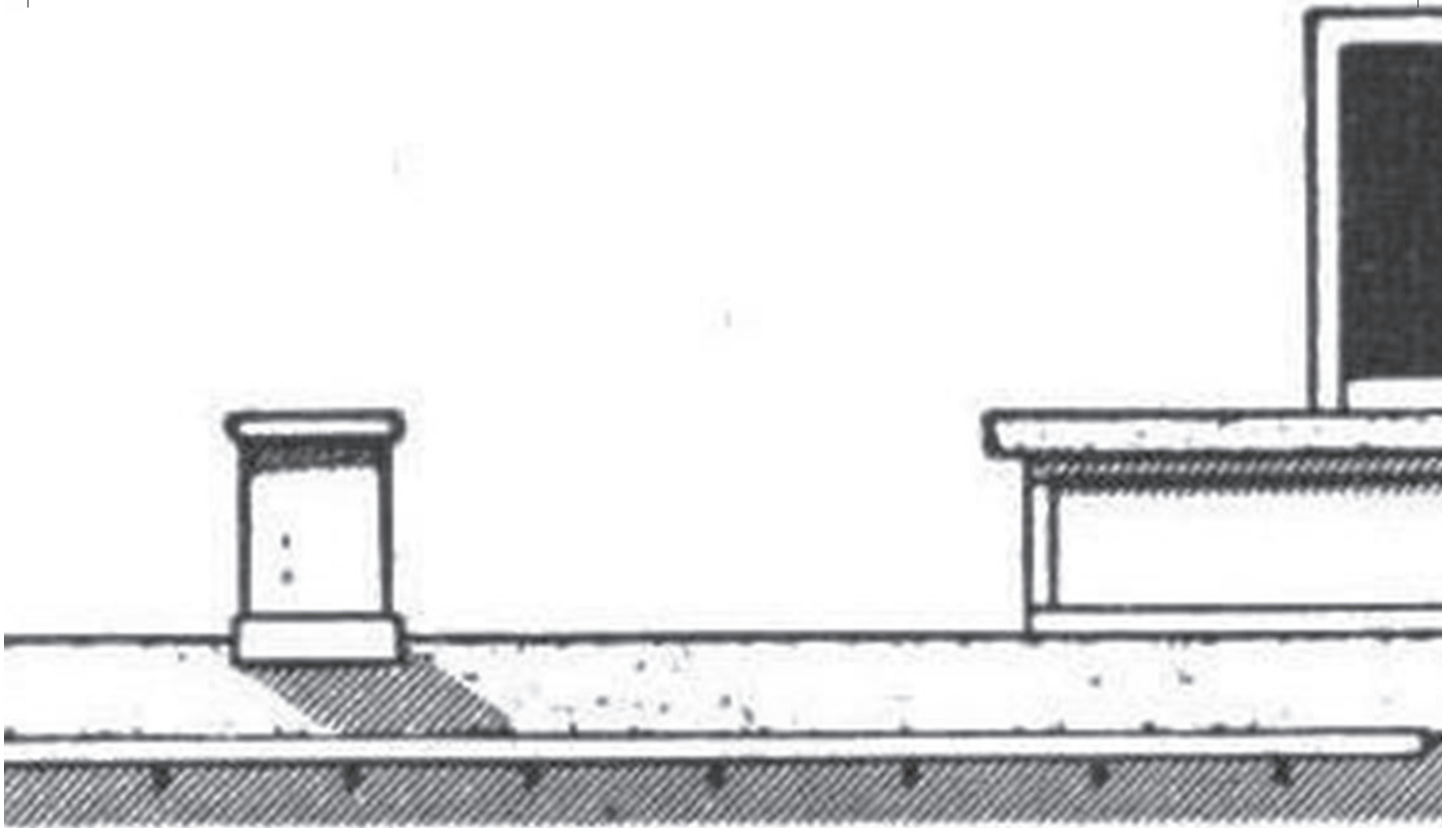




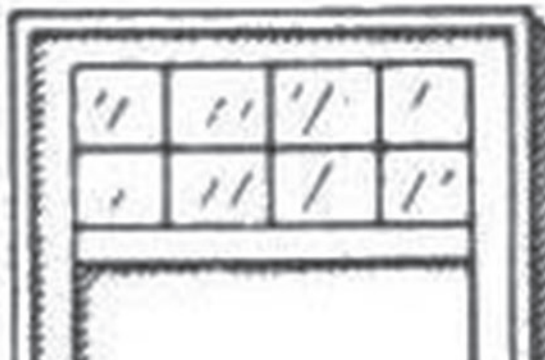






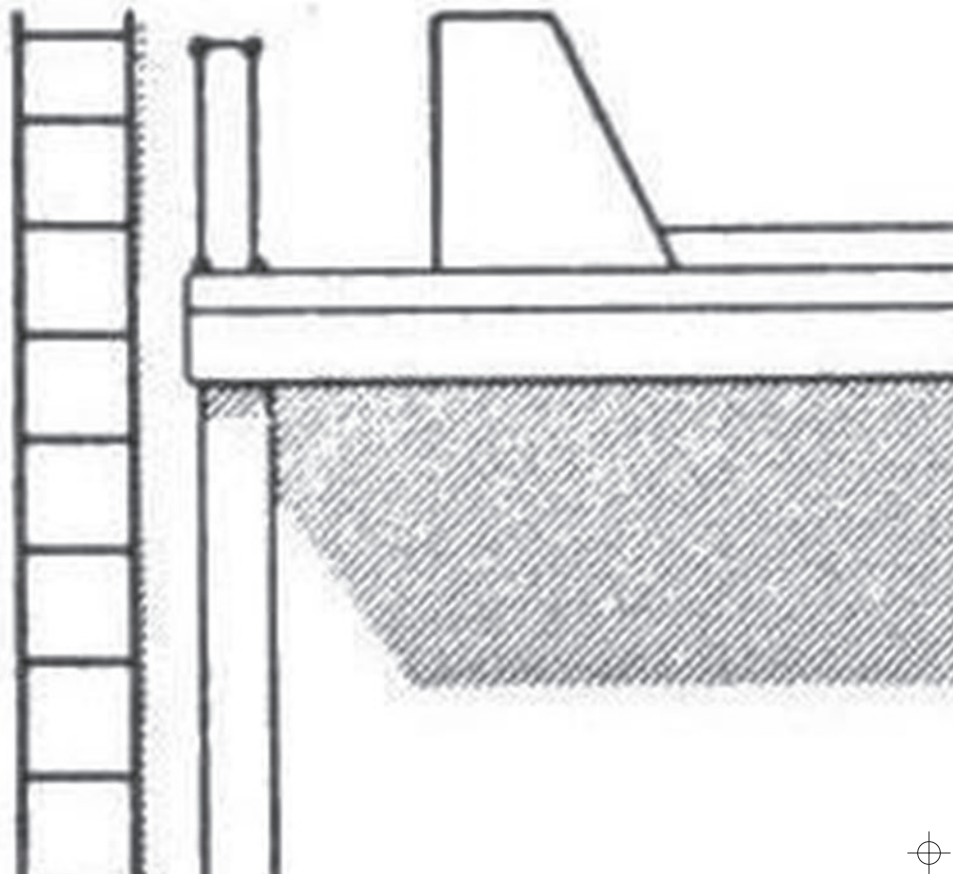
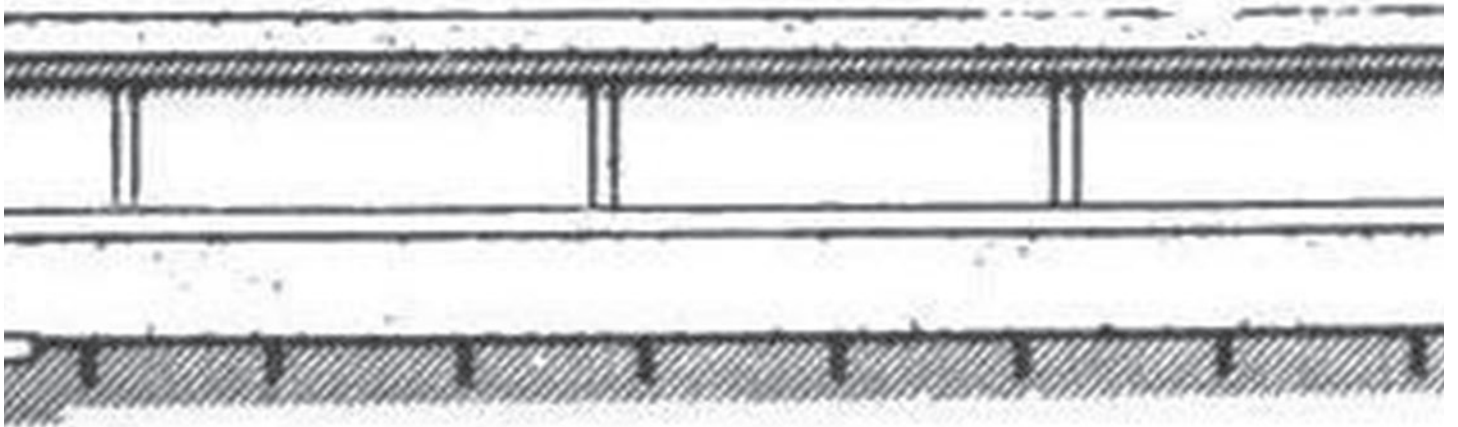


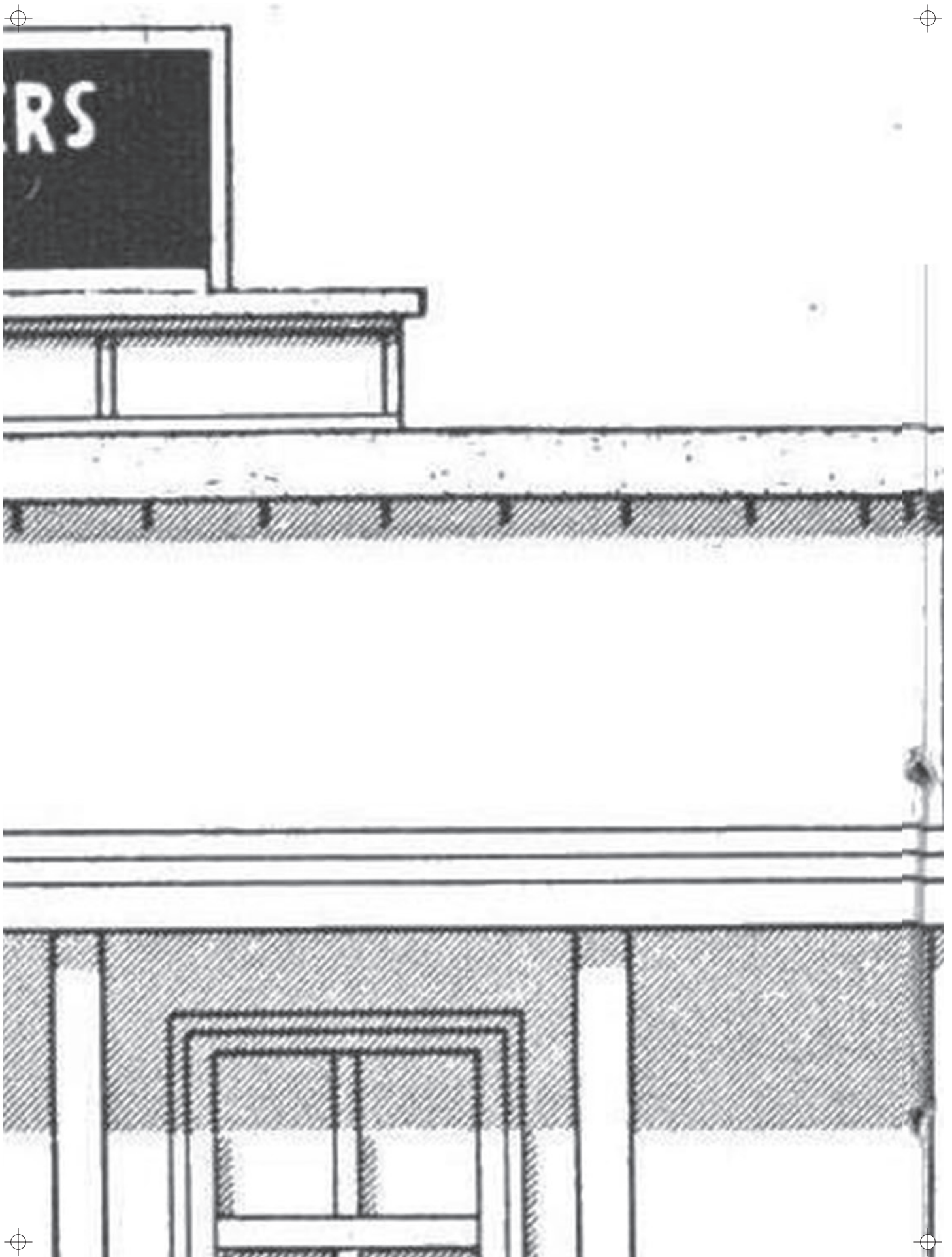
COLD STORAGE

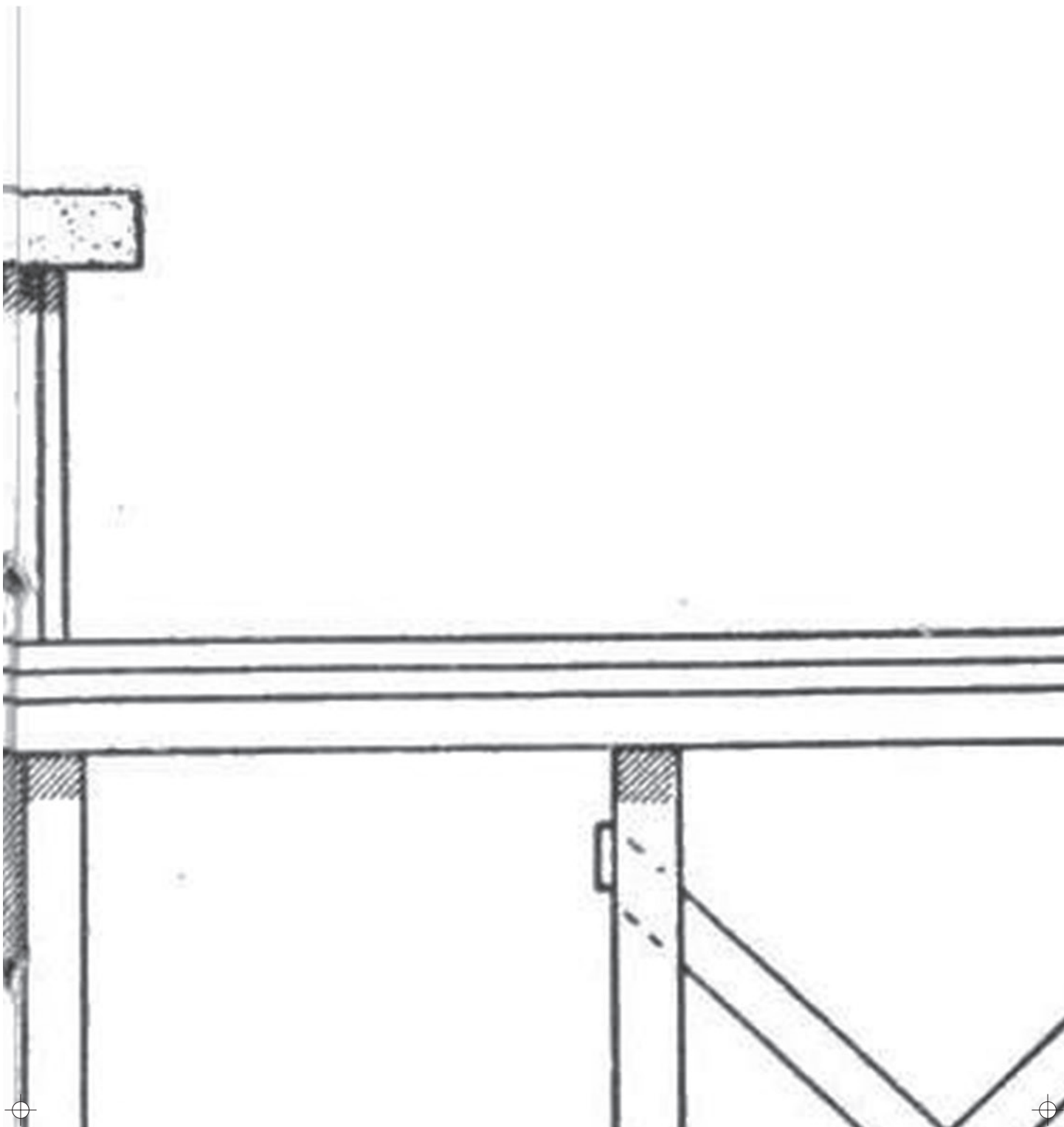


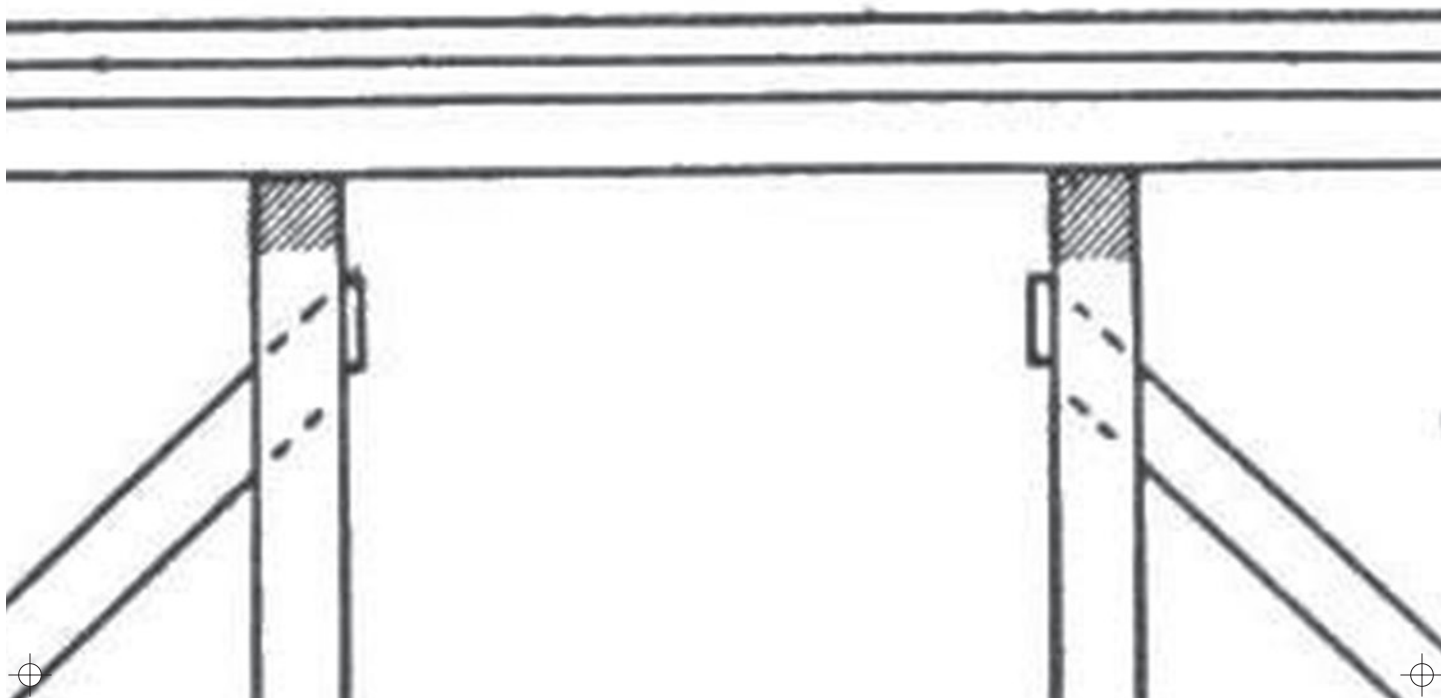


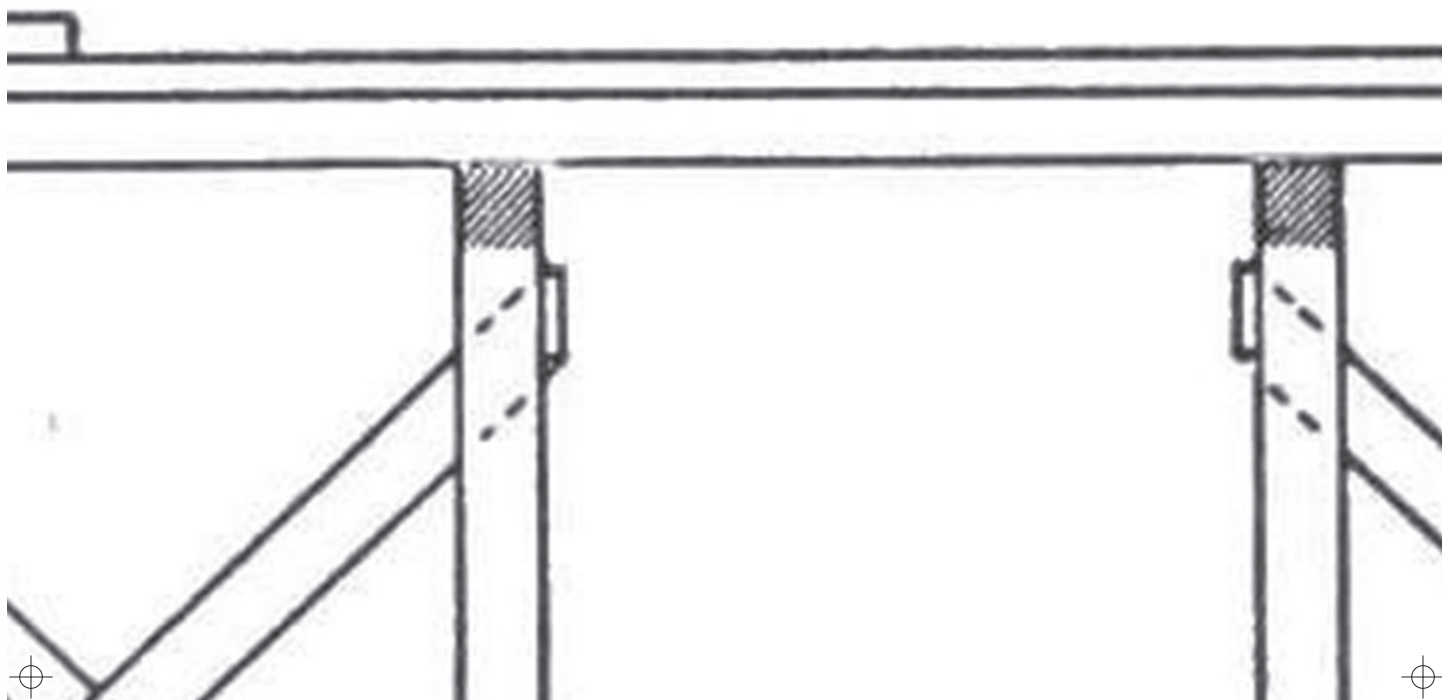
CLINT'S COLD CAR-ICER
"WE'LL CHILL YOU"

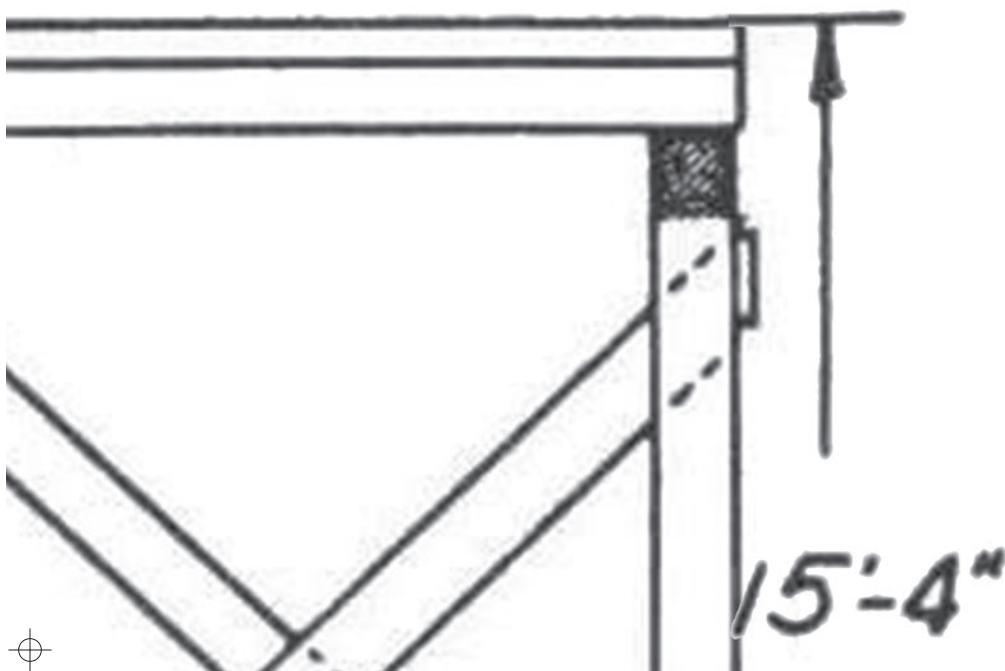


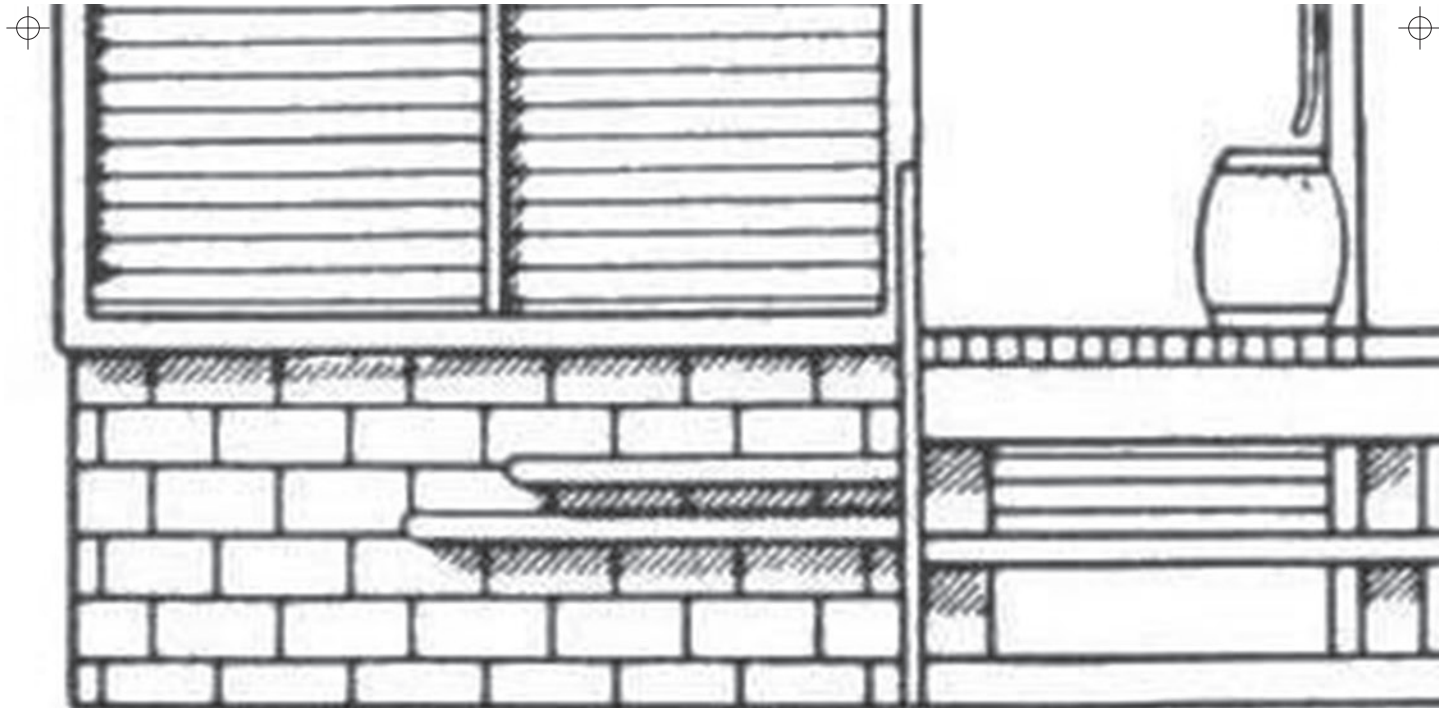


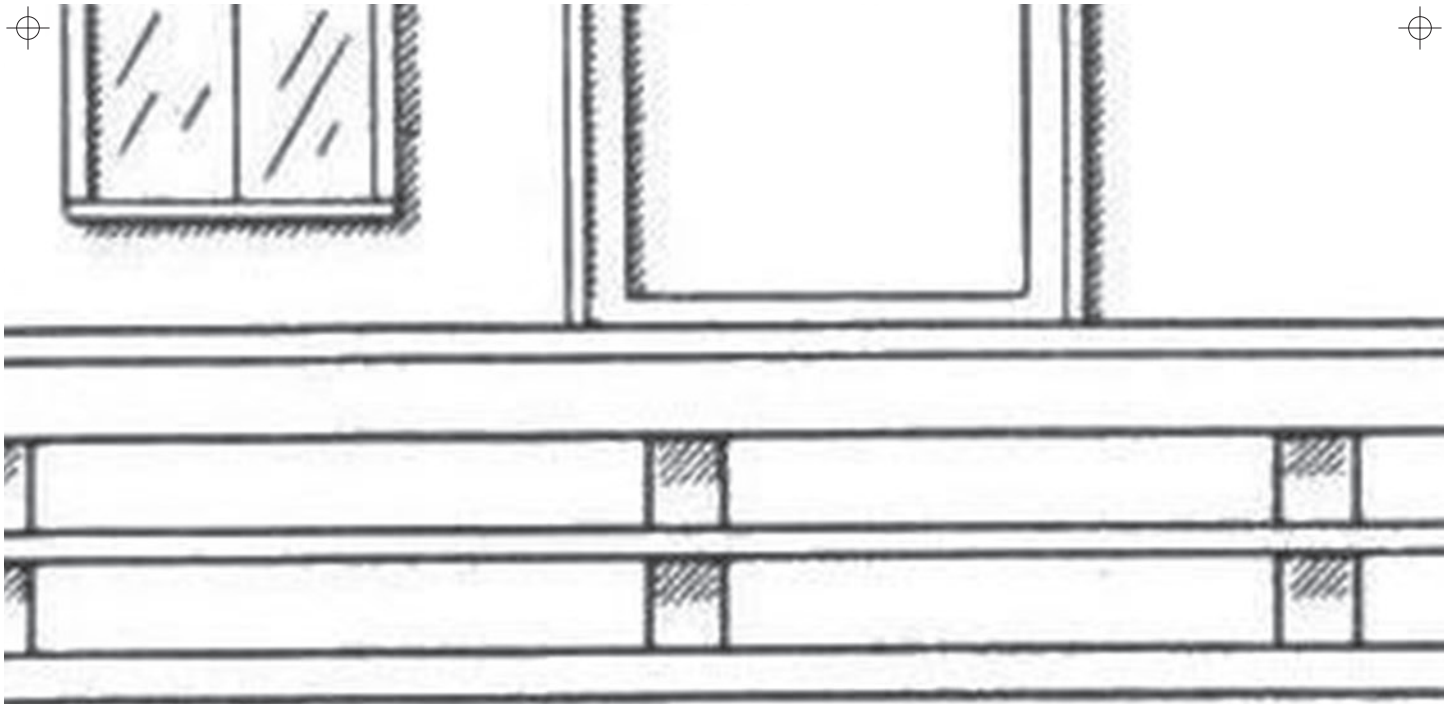


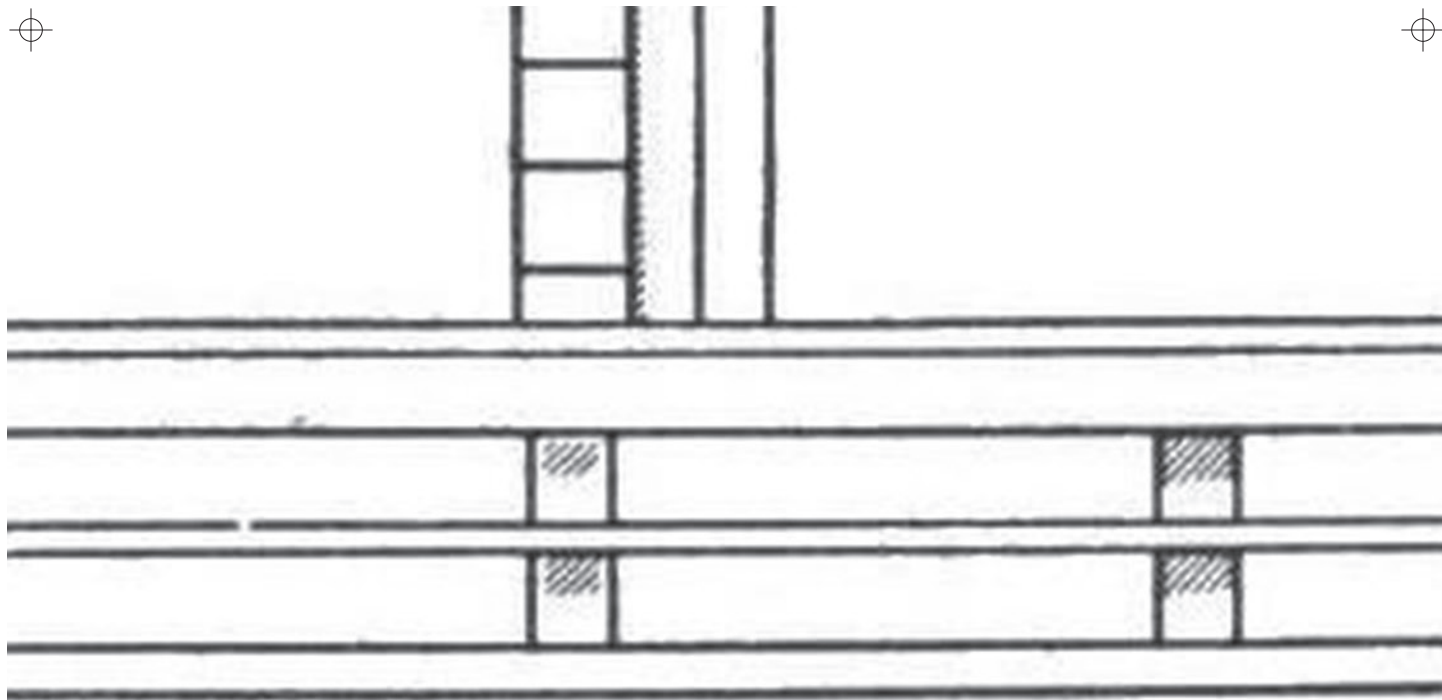


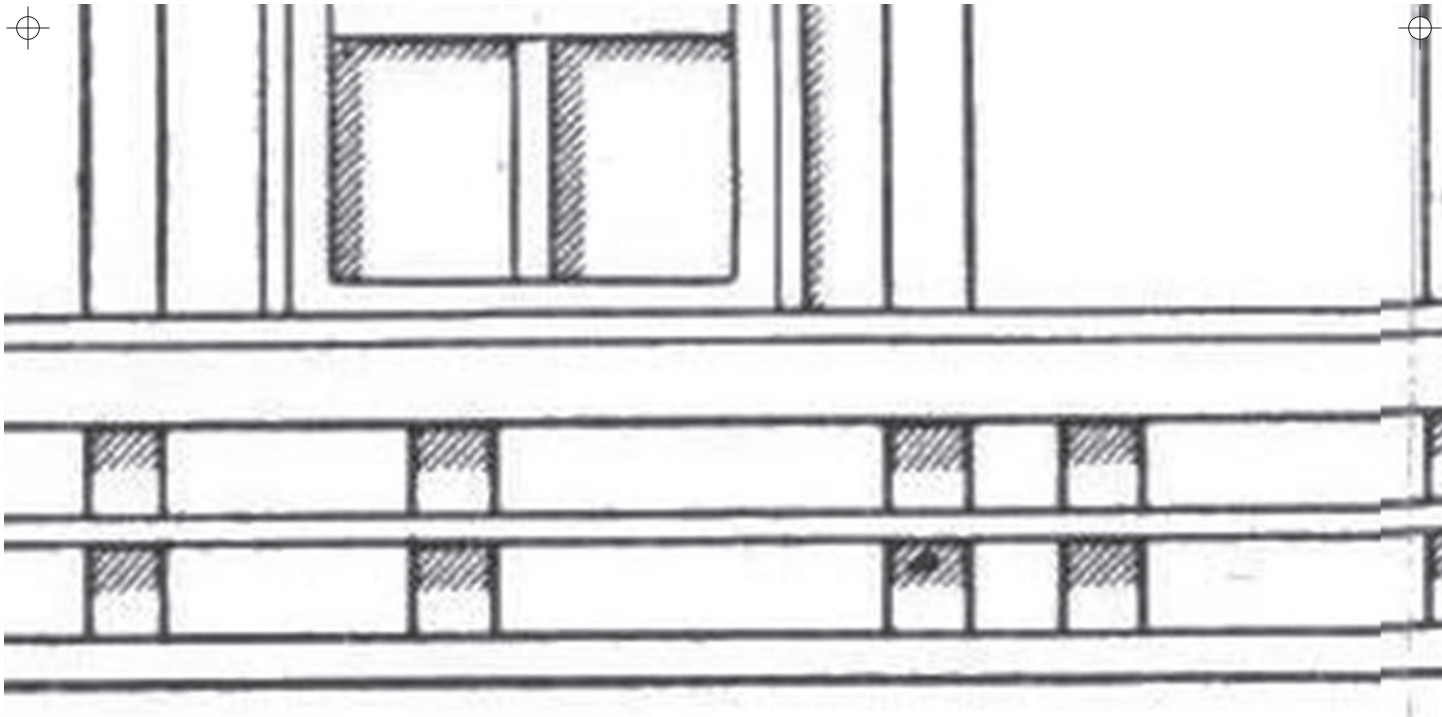


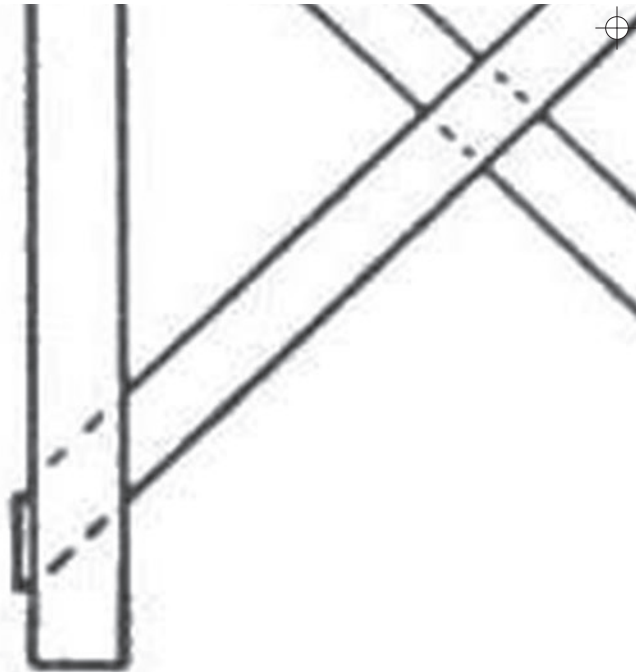


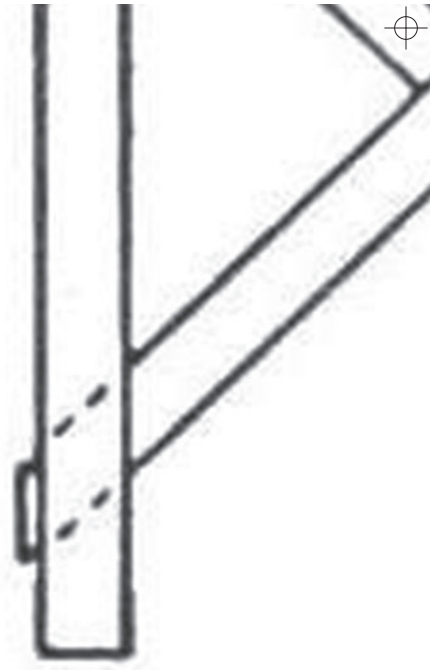
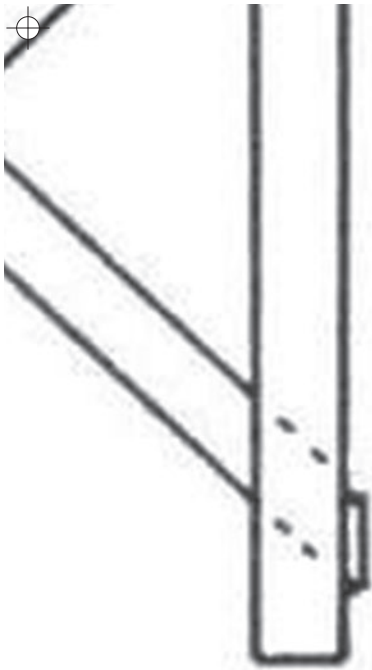


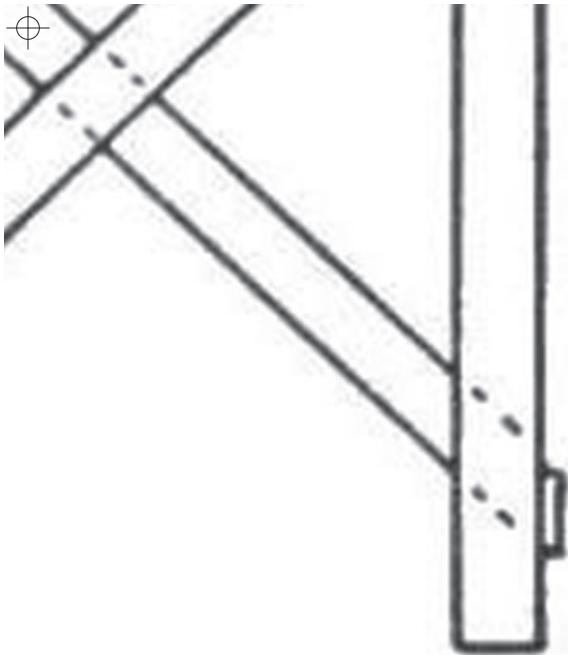


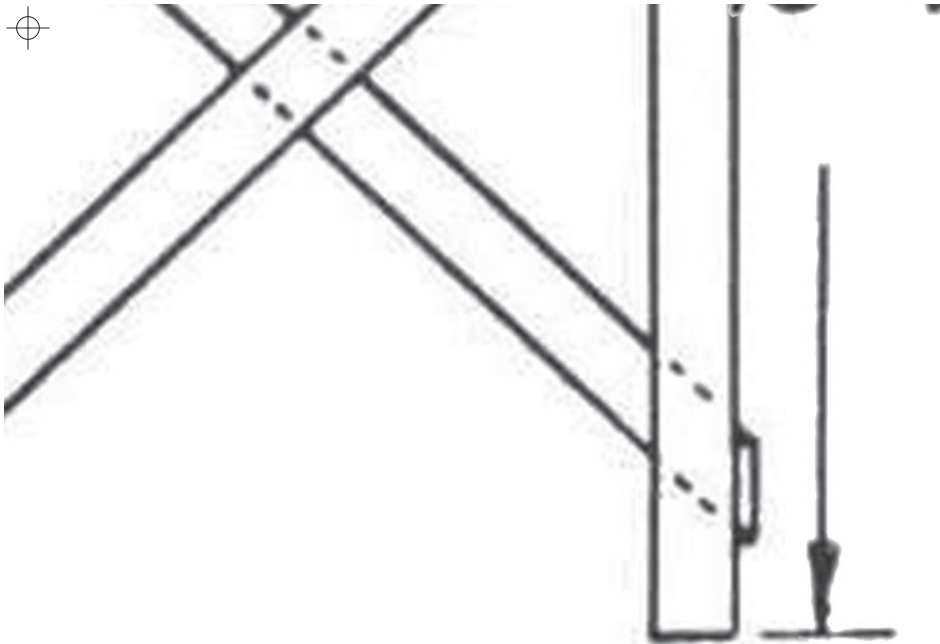


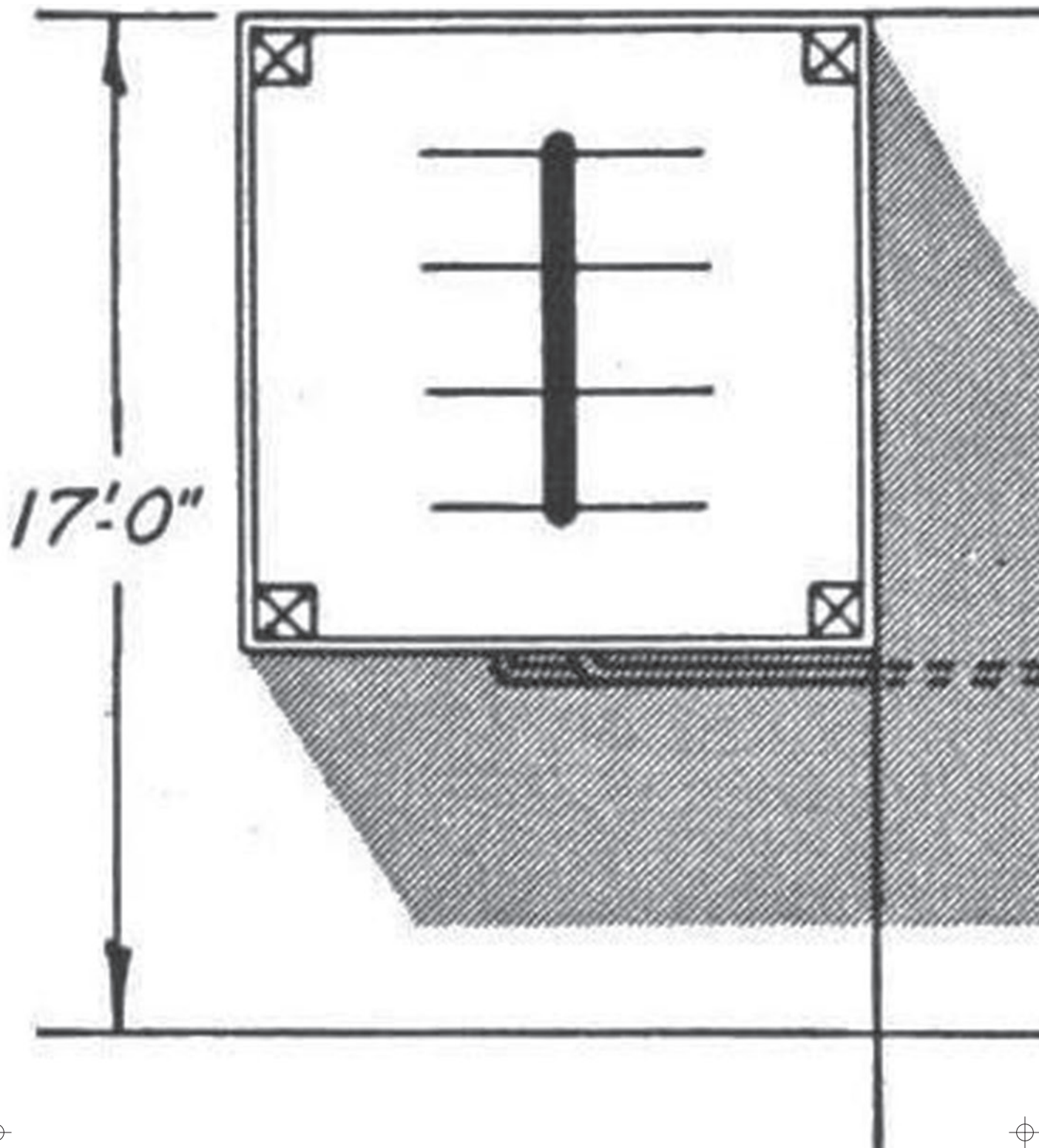
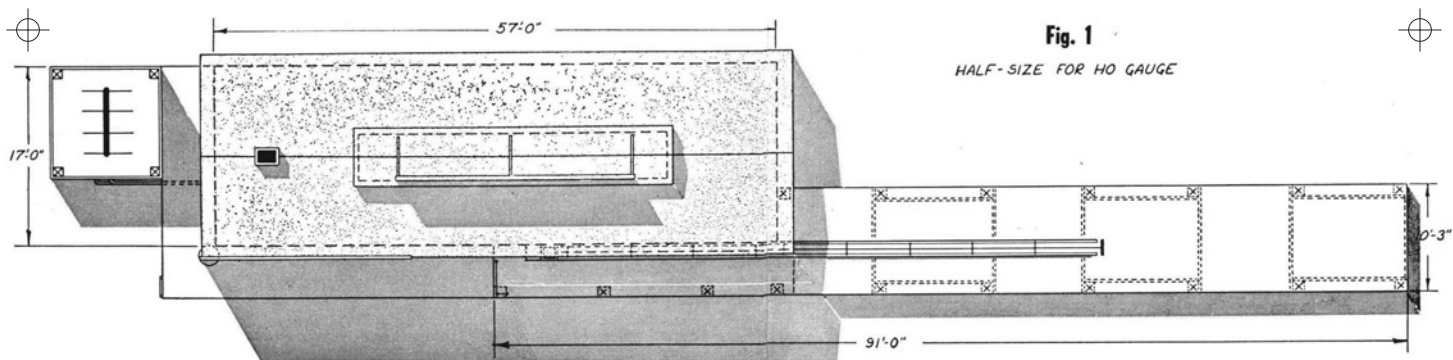


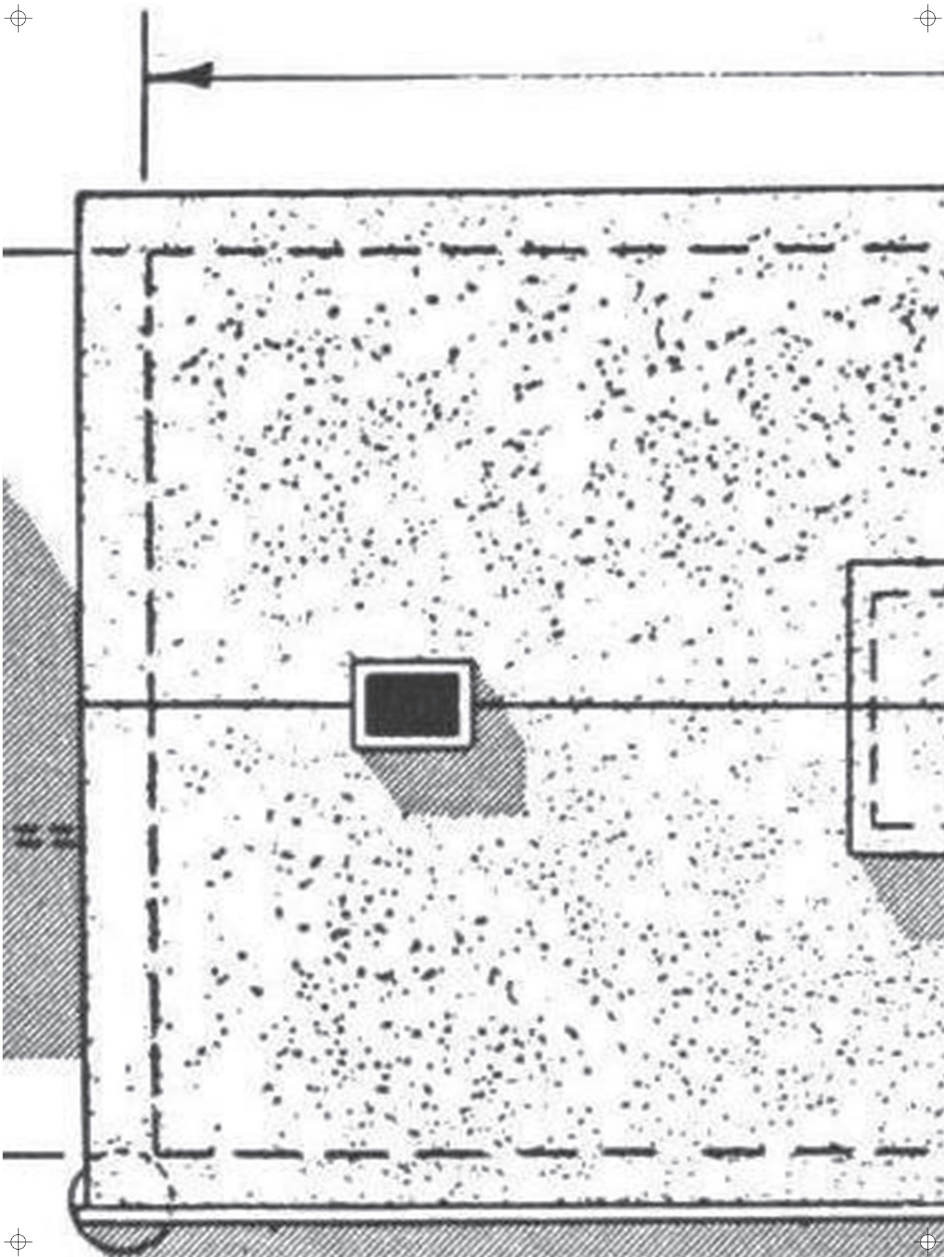














57'-0"

