

1:29 scale enginehouse

Illustrations by Steve Terry

[redrawn from the January 1947 issue of *Model Railroader* magazine]



Side view with shed

Enginehouses come in all shapes and sizes, from massive, multi-stall roundhouses to single-stall sheds that are little more than a roof supported on spindly wooden columns. Here we have a small but substantial two-stall enginehouse made of brick. The prototype was part of the Lehigh Valley Railroad's facilities at Mauch Chunk, Pennsylvania. The structure is typical of those built in the mid 1880s. Many lasted well into the 20th century and a few survive today.

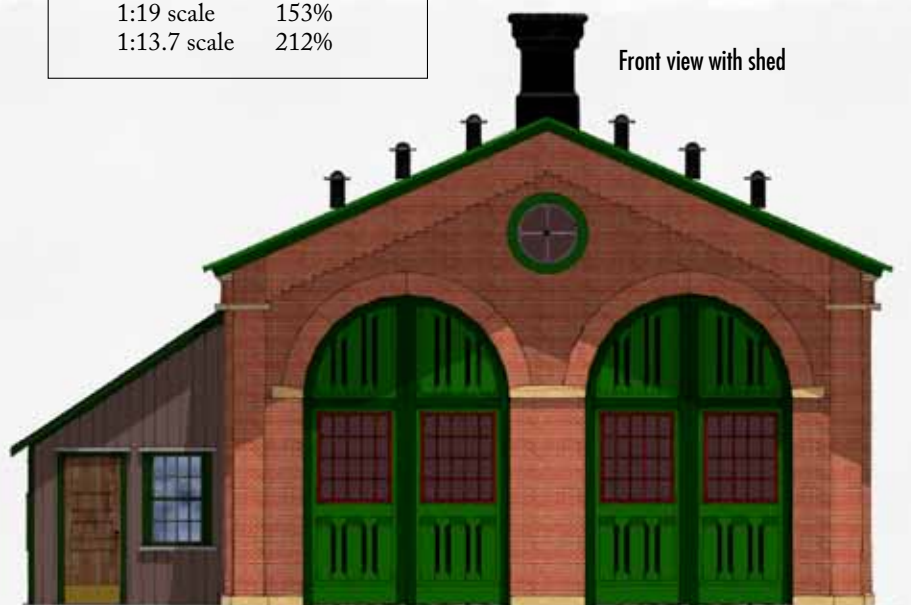
Steve Terry has taken the liberty of adding a lean-to shed to one side of the enginehouse. This is an optional feature that can be modeled or not, as the hobbyist sees fit. The plans for this structure originally appeared in the January 1947 issue of *Model Railroader* magazine.

This is an online supplement to the December 2012 issue of *Garden Railways* magazine. To purchase previously published paper plans, see the list of those available at www.sidestreet.info

Are you working in a different scale?

If you're not working in 1:29 scale, print the drawings out at the percentage given below for your scale.

1:32 scale	91%
1:24 scale	121%
1:22.5 scale	129%
1:20.3 scale	143%
1:19 scale	153%
1:13.7 scale	212%

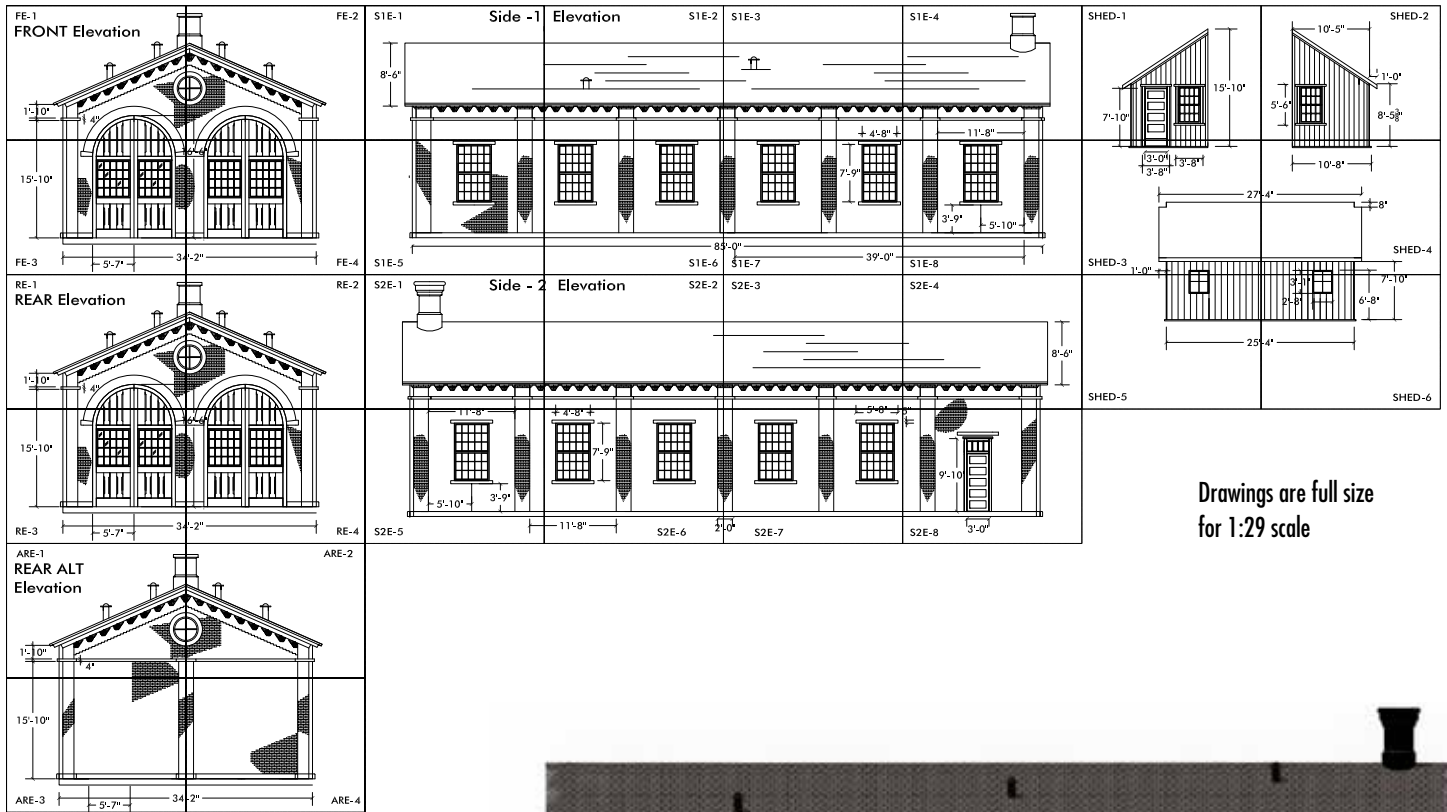


Front view with shed

Steve Terry's blog

Steve Terry, who does these drawings for *Garden Railways*, has his own blog, much of which has to do with his beautiful work. Check it out: <http://tripptee.blogspot.com/>

How to assemble the drawings



Drawings are full size
for 1:29 scale



Side 1



Side 2

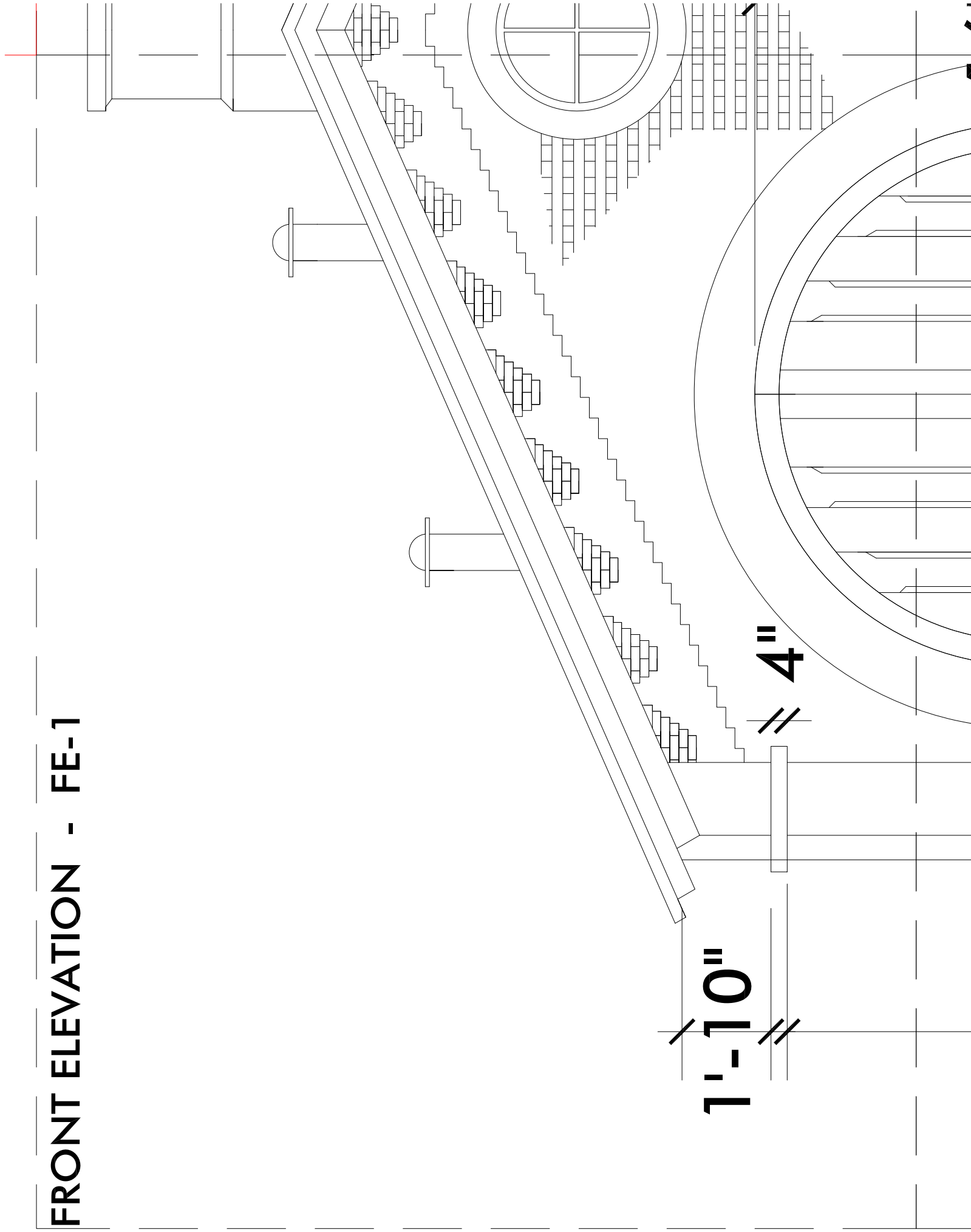


Front



Side view with shed

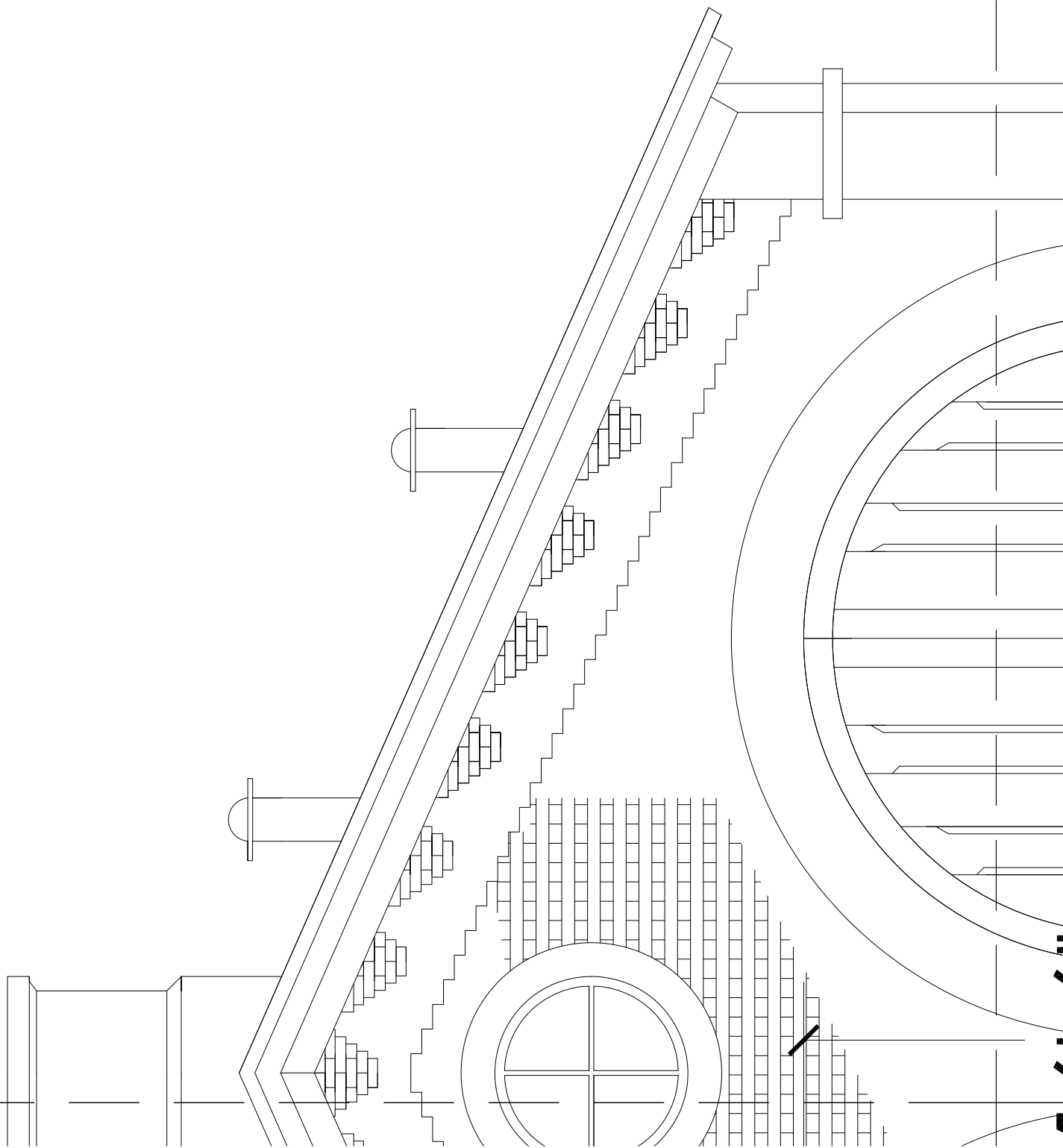
FRONT ELEVATION - FE-1

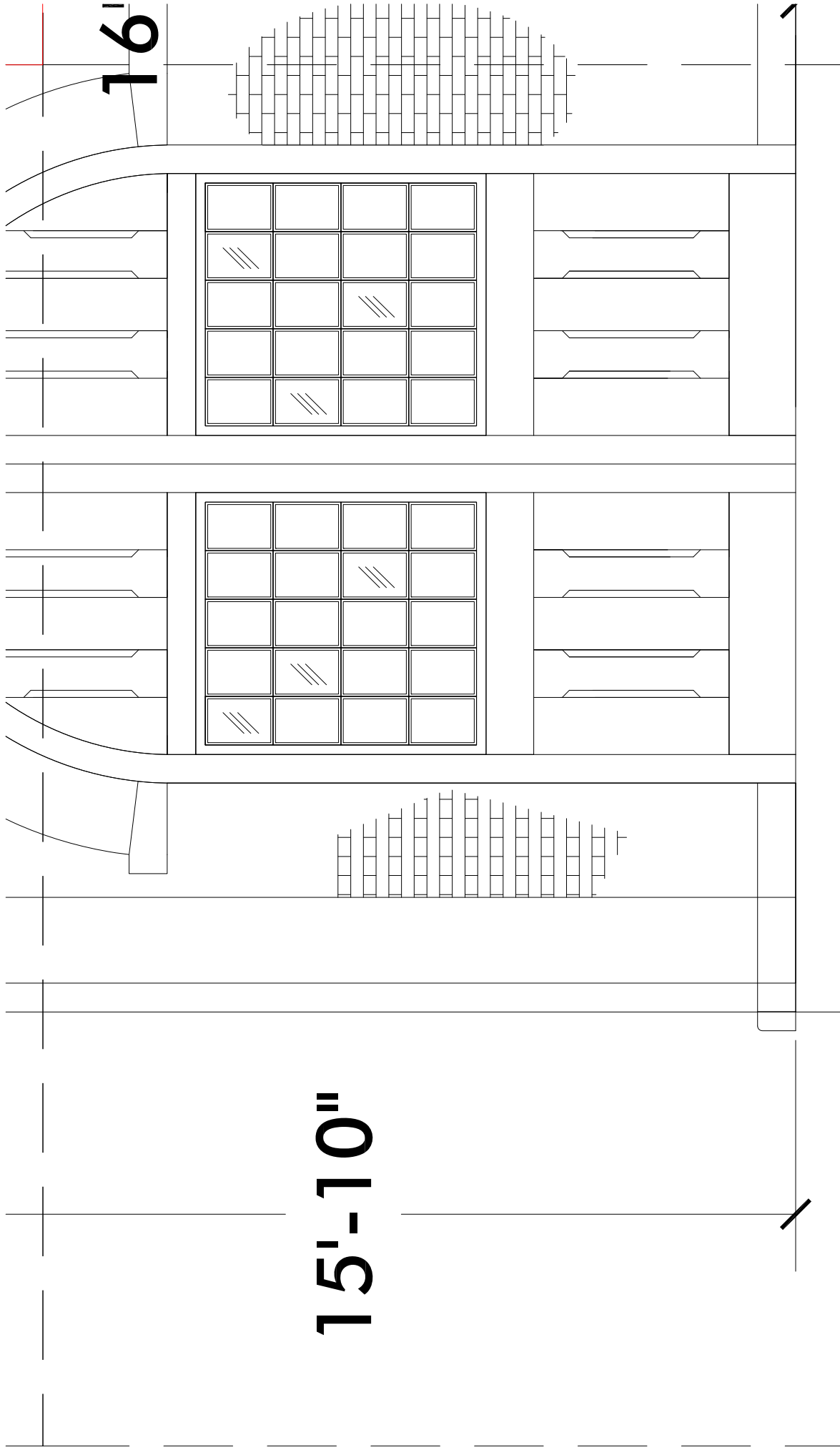


1'-10"

4"

FRONT ELEVATION - FE-2





15'-10"

16'

34'-

5'-7"

FRONT ELEVATION - FE-3

16'-6"

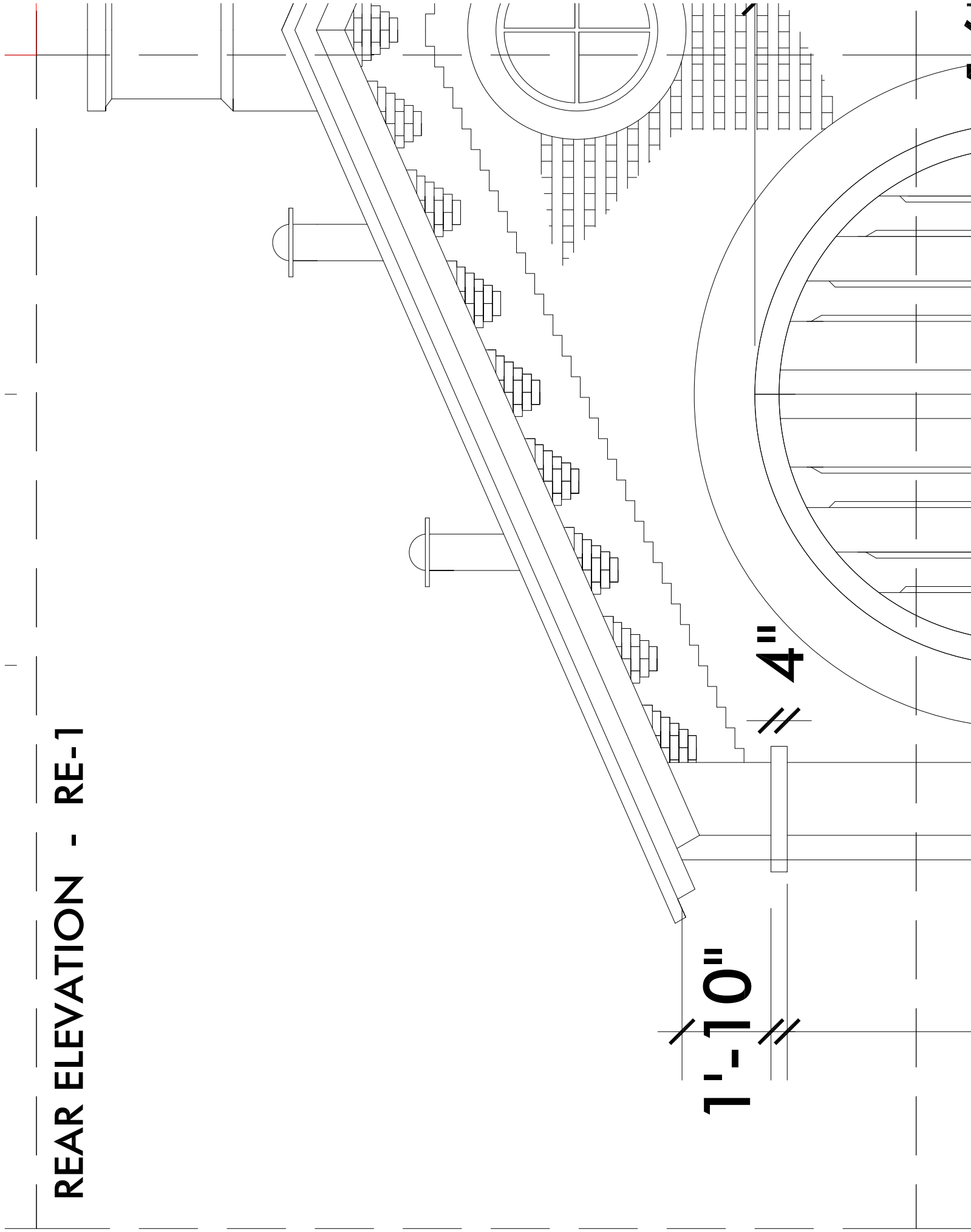
4'-2"

FRONT ELEVATION - FE-4

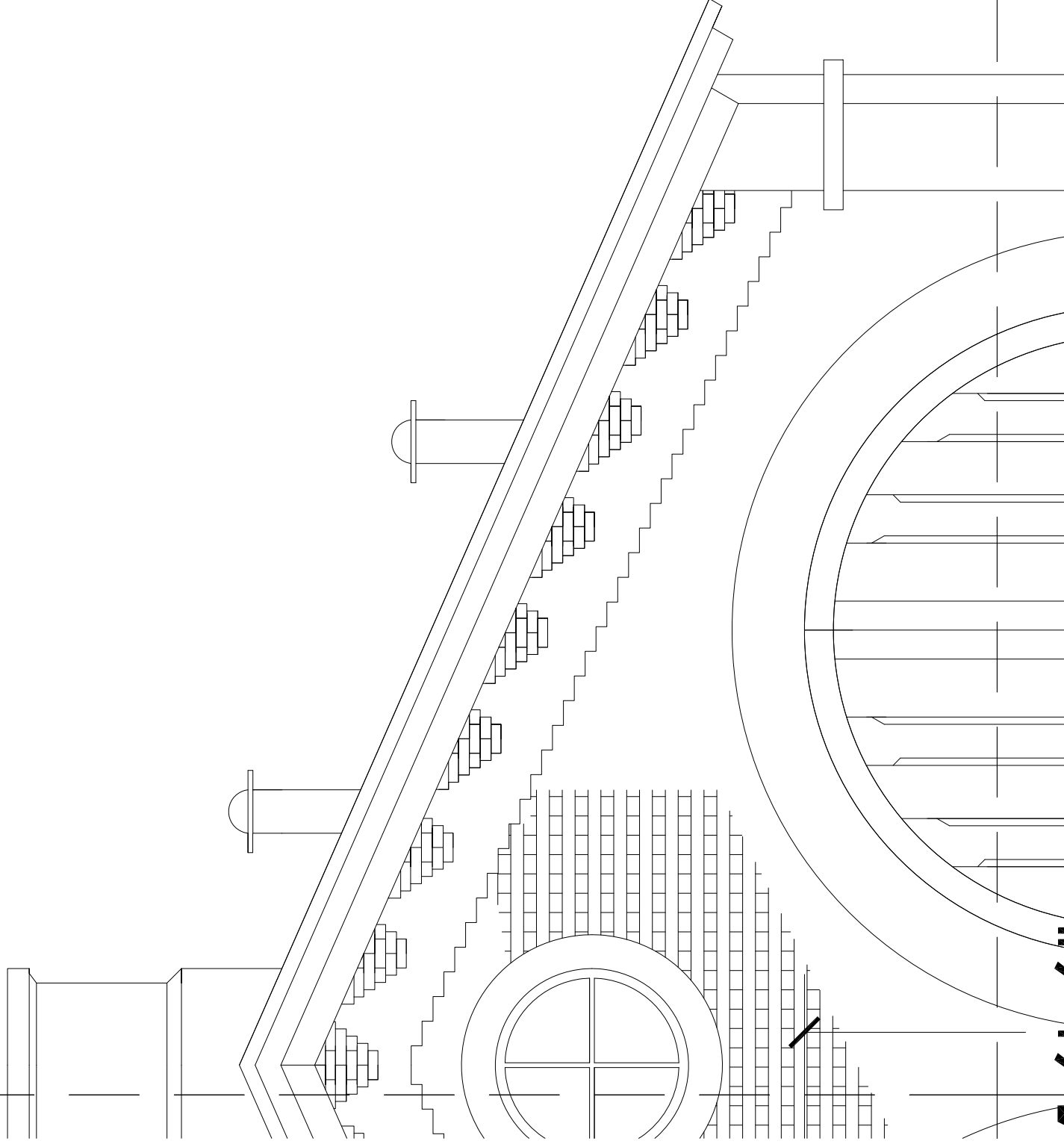
REAR ELEVATION - RE-1

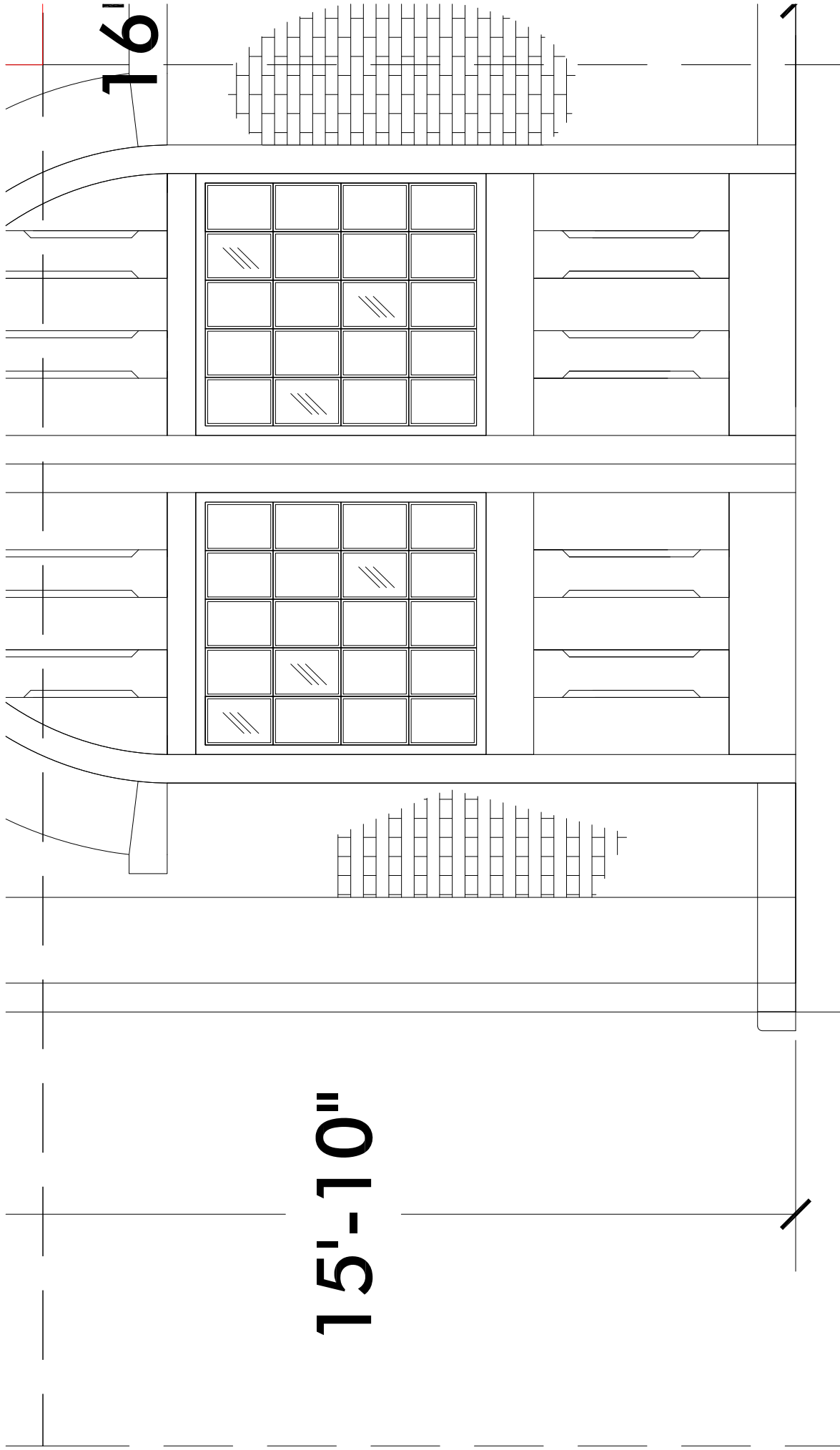
1'-10"

4"



REAR ELEVATION - RE-2





15'-10"

16'

34'-

5'-7"

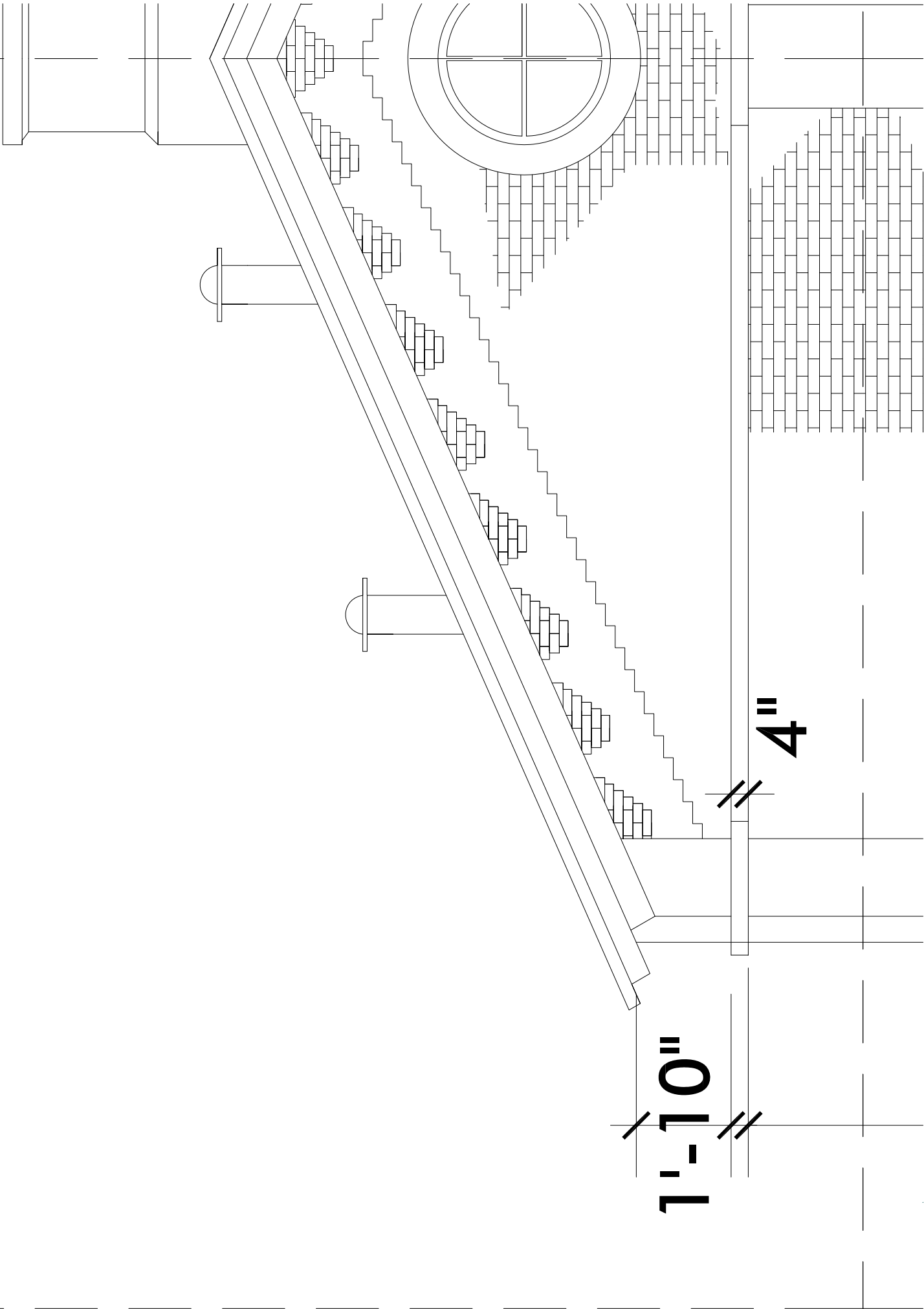
REAR ELEVATION - RE-3

16'-6"

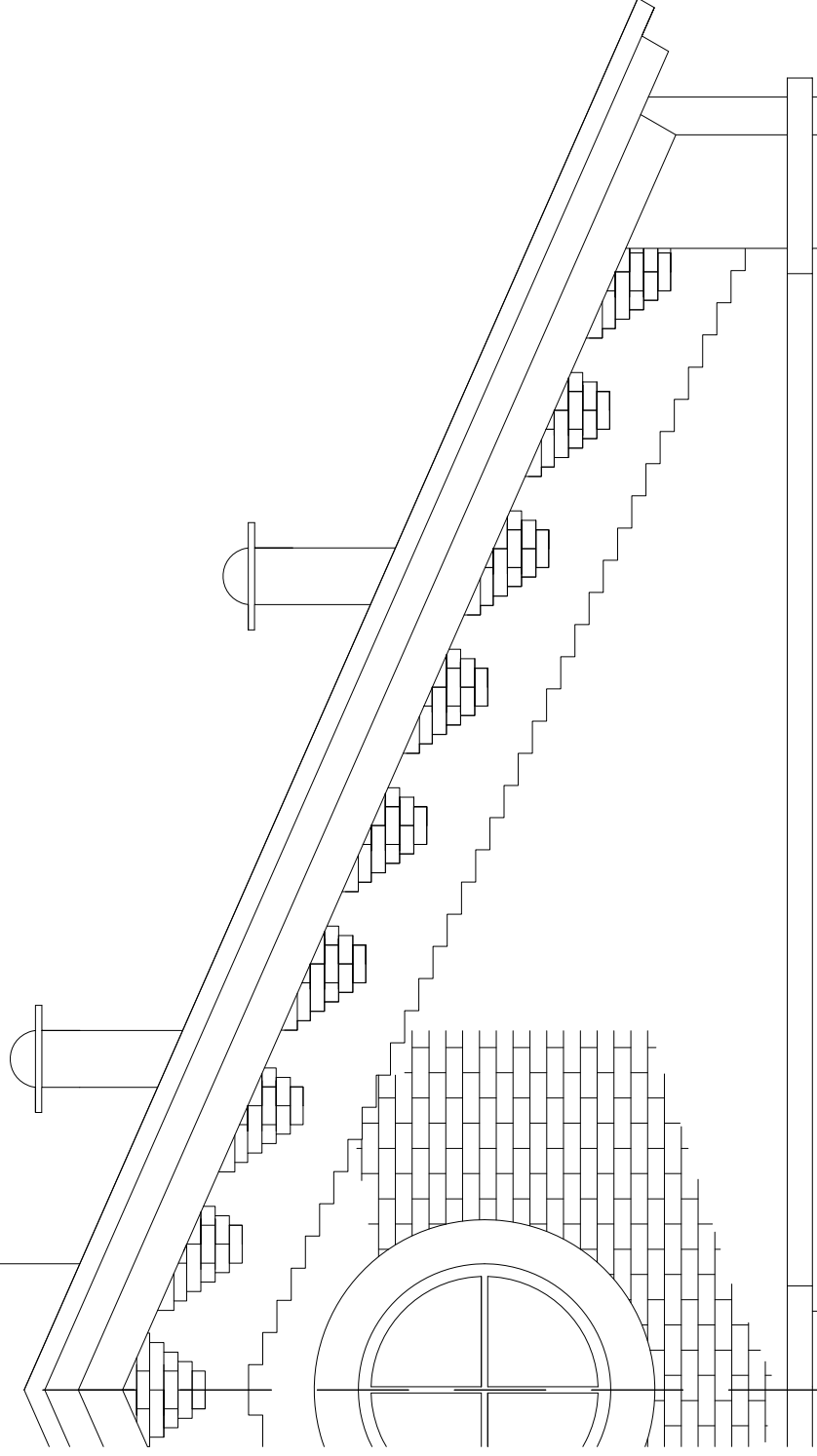
4'-2"

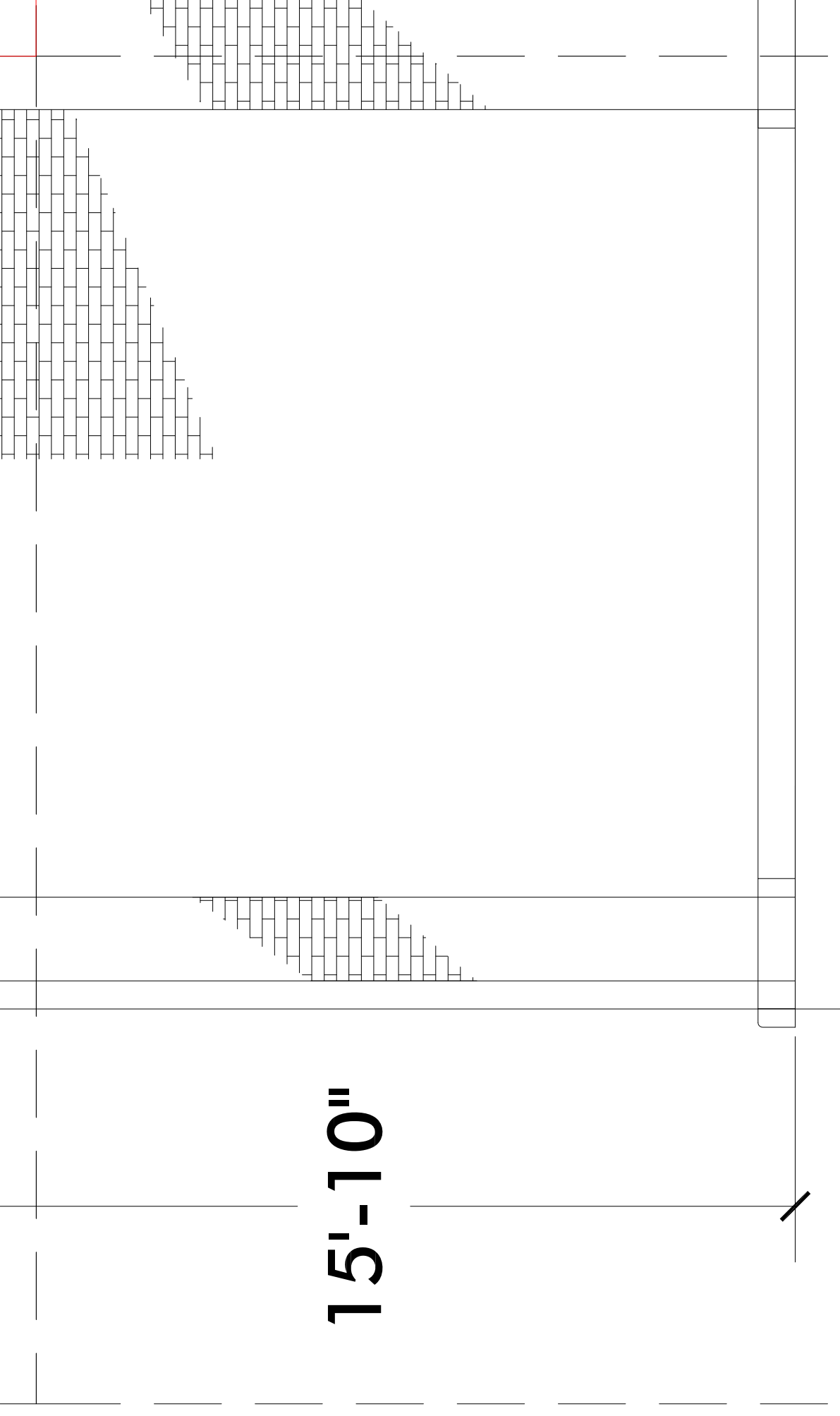
REAR ELEVATION - RE-4

ALT REAR ELEV - ARE-1



ALT REAR ELEV - ARE-2



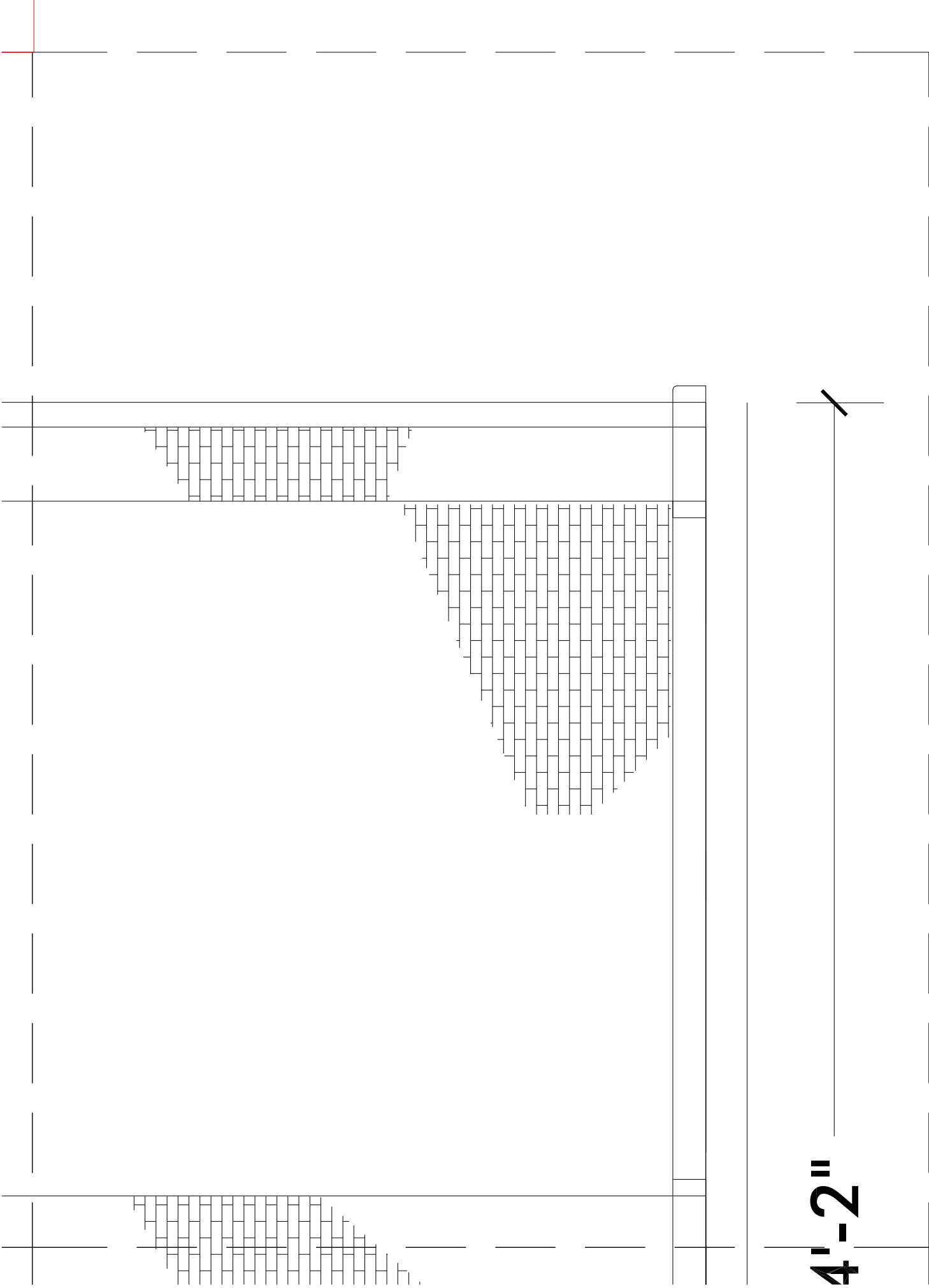


15'-10"

34'-2"

5'-7"

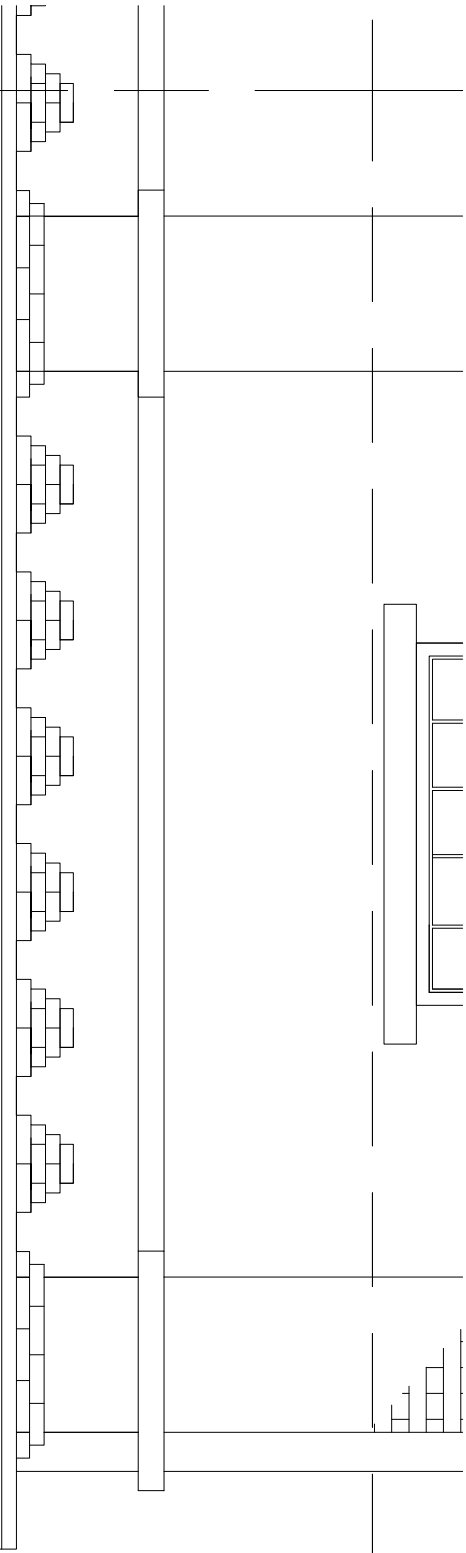
ALT REAR ELEV - ARE-3



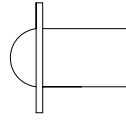
ALT REAR ELEV - ARE-4

SIDE 1 ELEV - S1E-1

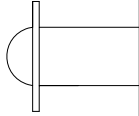
8'-6"



SIDE 1 ELEV - S1E-2



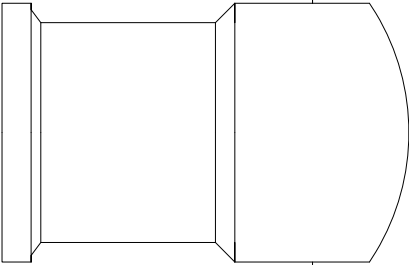
SIDE 1 ELEV - S1E-3



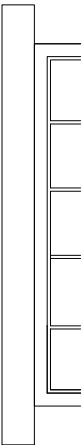
4'-8"

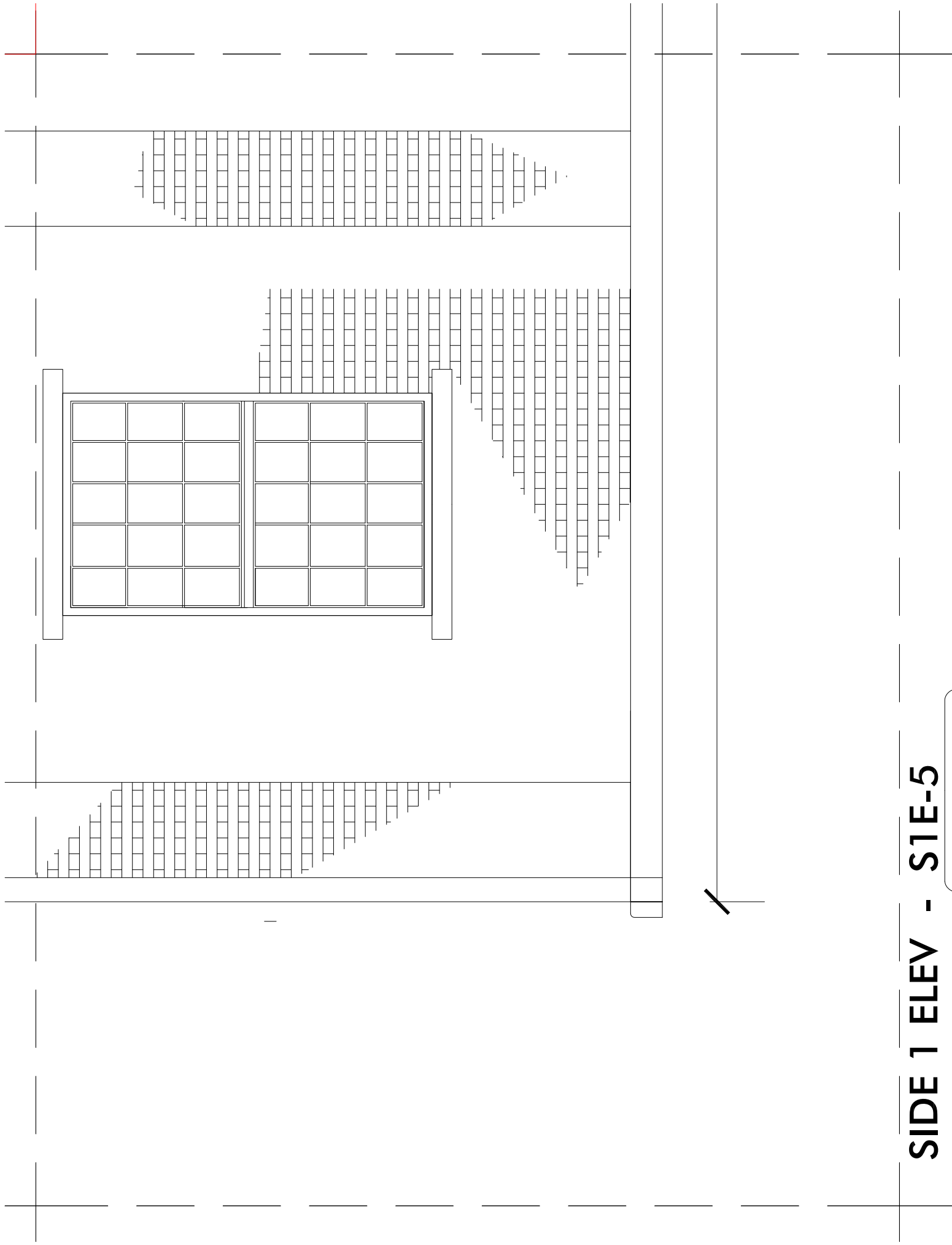


SIDE 1 ELEV - S1E-4

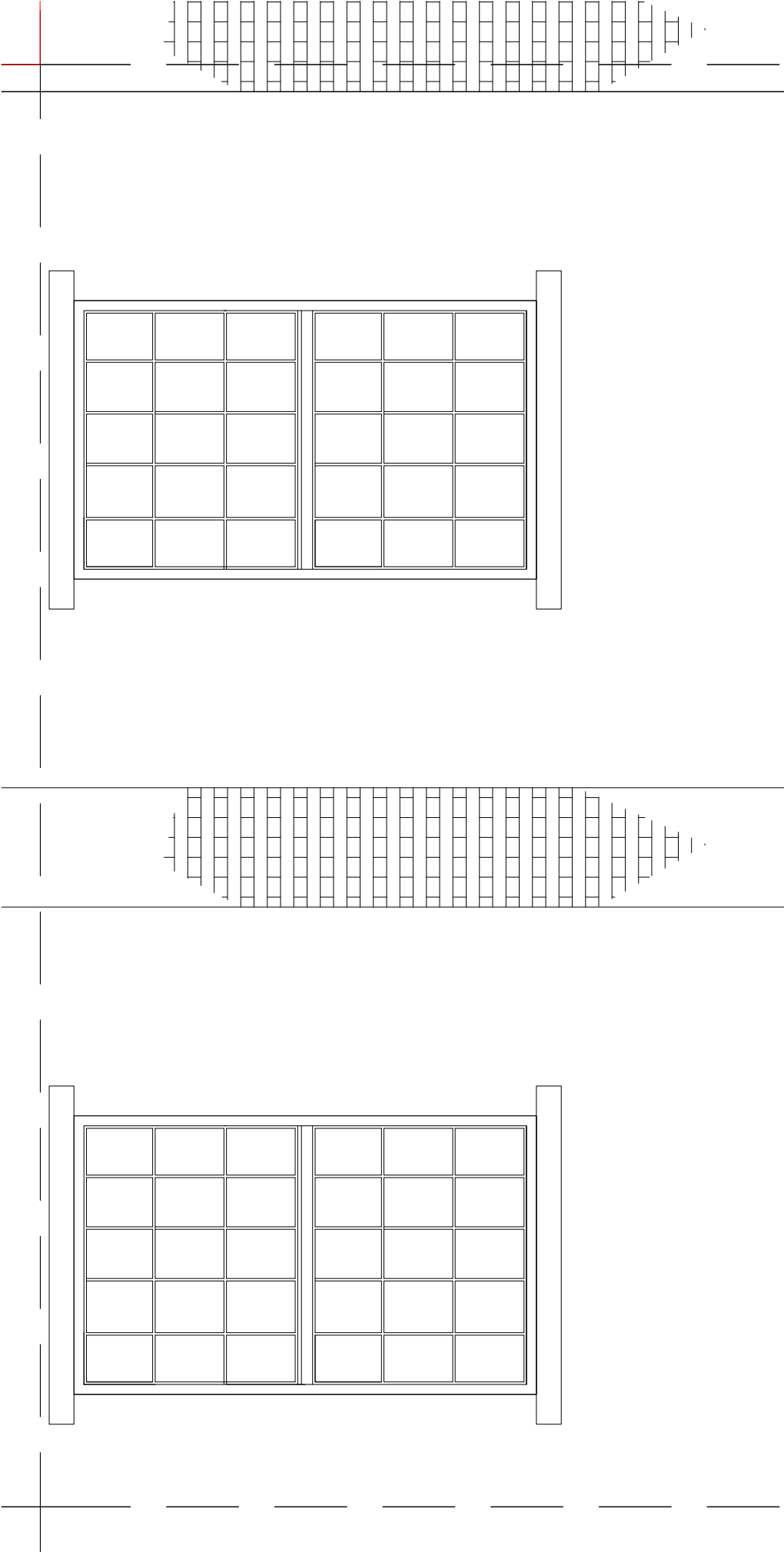


11'-8"



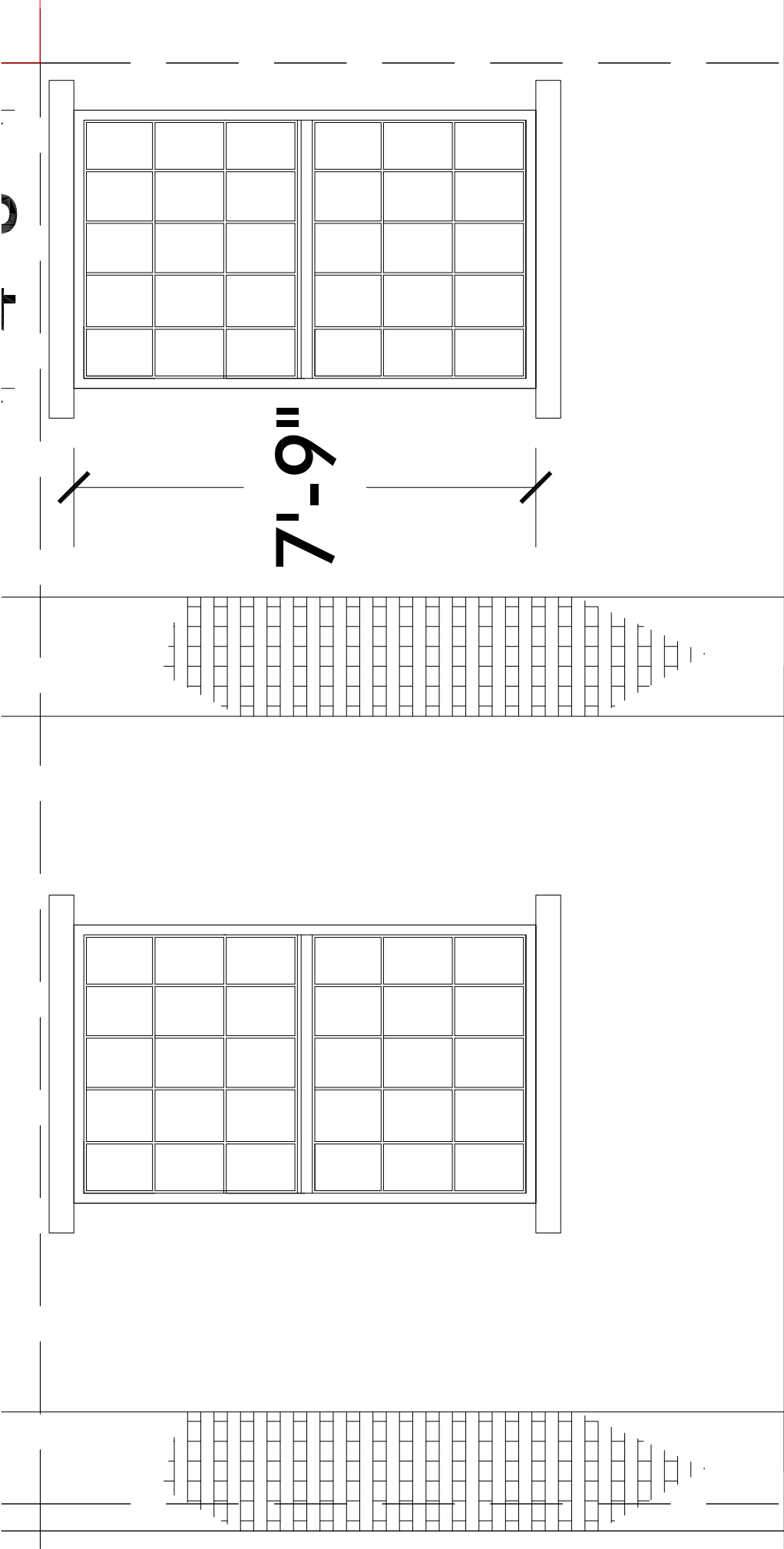


SIDE 1 ELEV - S1E-5



85'-

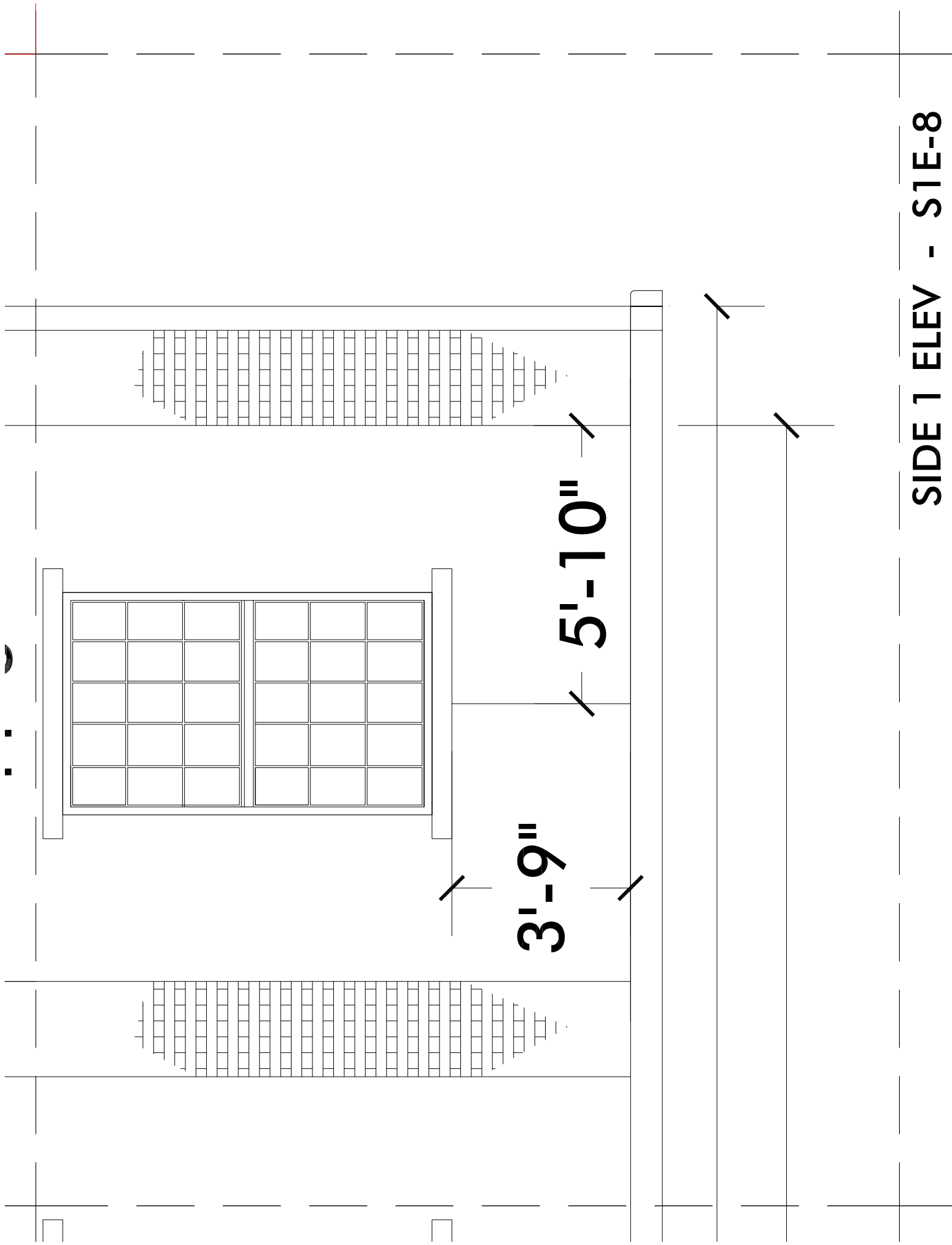
SIDE 1 ELEV - S1E-6



35'-0"

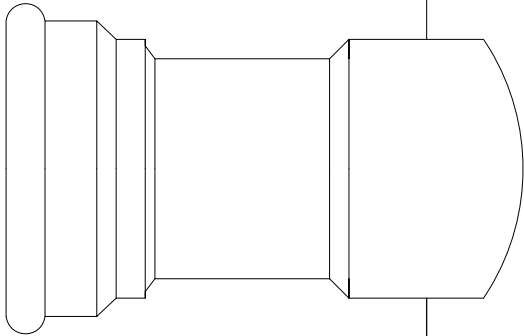
39'-0"

SIDE 1 ELEV - S1E-7



SIDE 1 ELEV - S1E-8

SIDE 2 ELEV - S2E-1



11'-8"



SIDE 2 ELEV - S2E-2

4'-8"



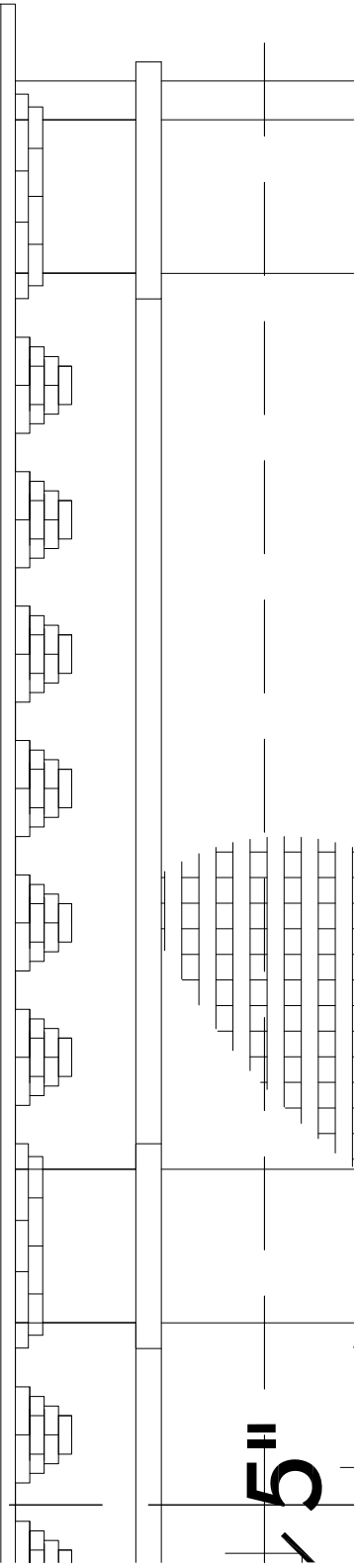
SIDE 2 ELEV - S2E-3

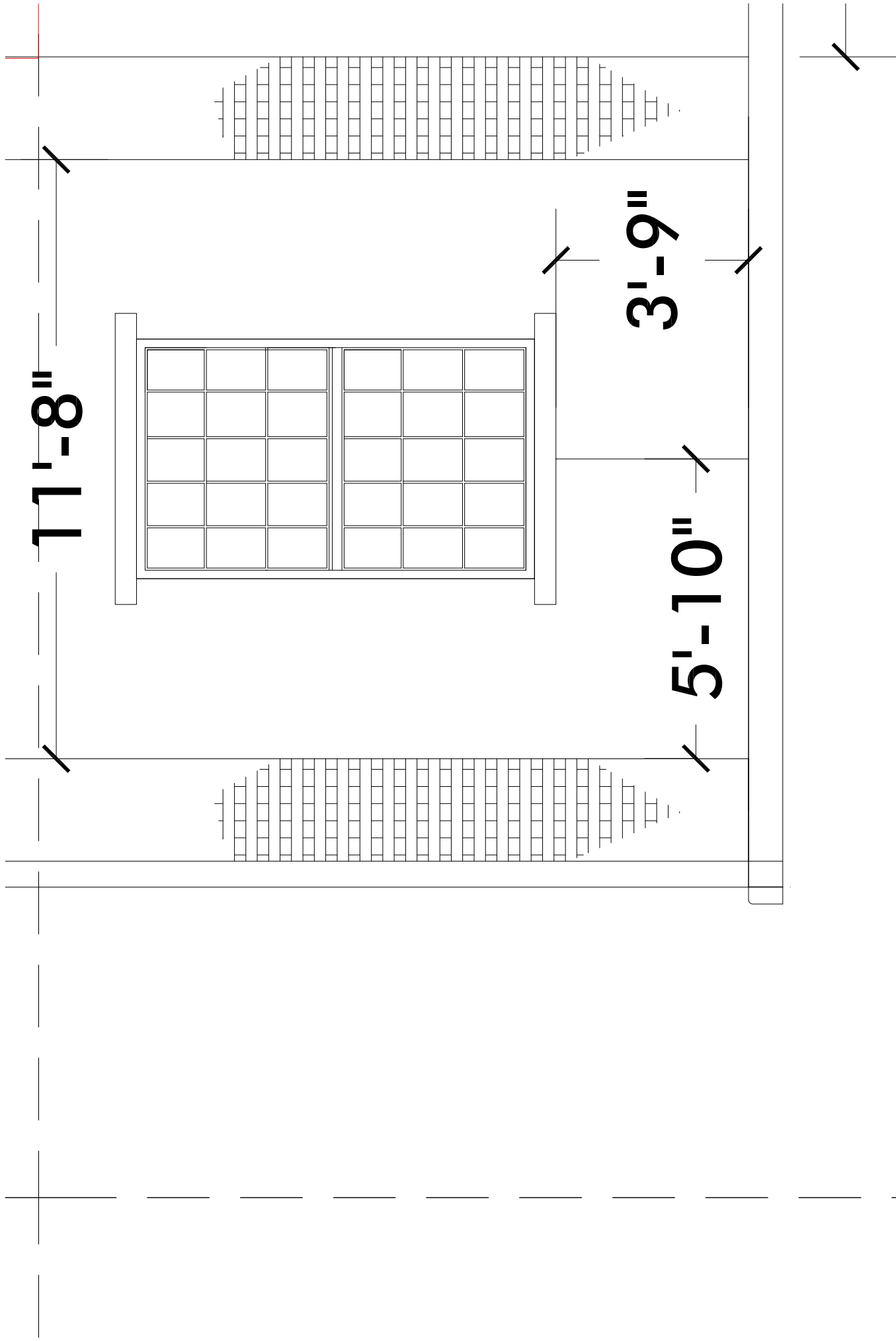
5'-8" / 5"

SIDE 2 ELEV - S2E-4

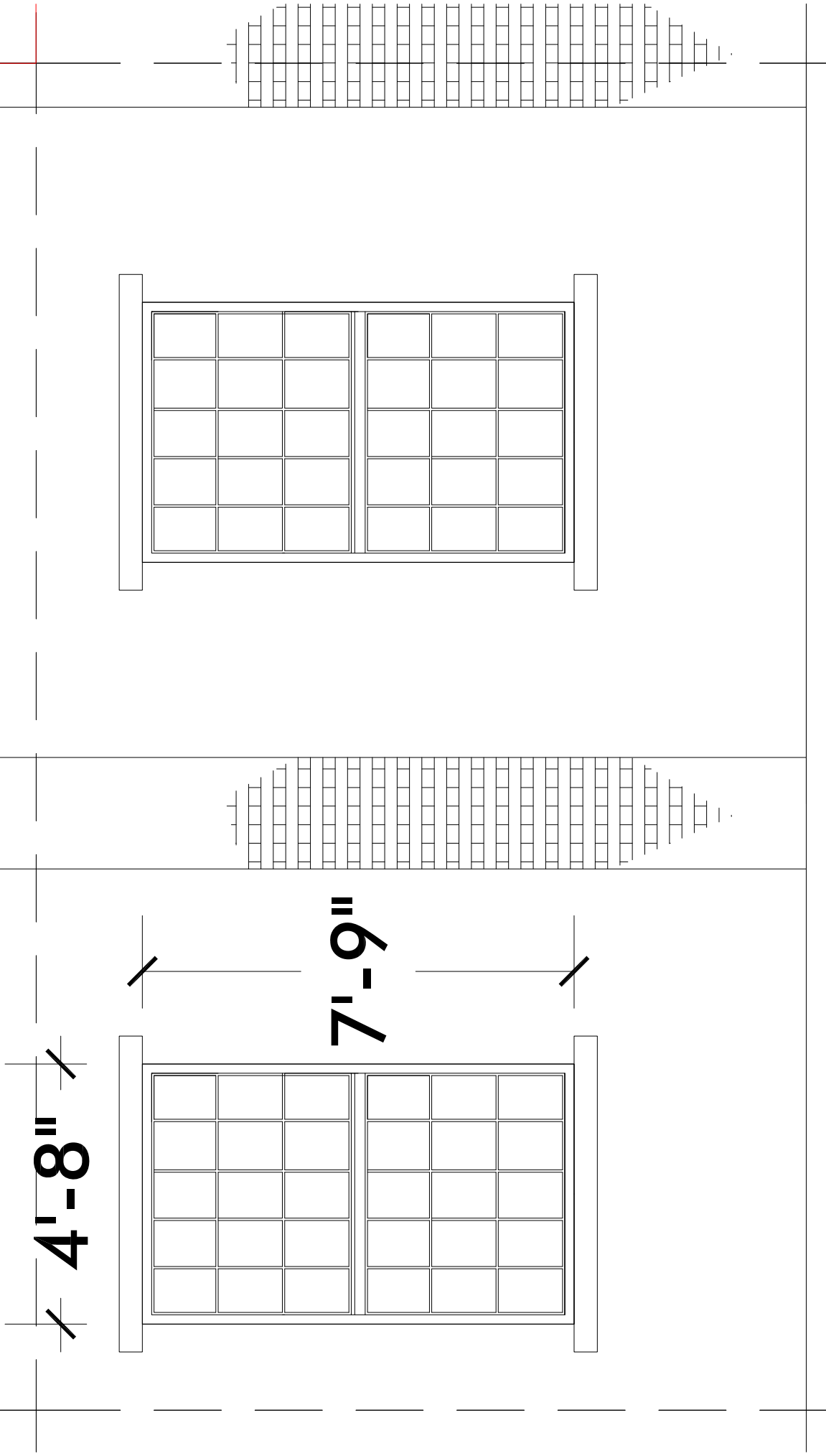
8'-6"

5"





SIDE 2 ELEV - S2E-5



4'-8"

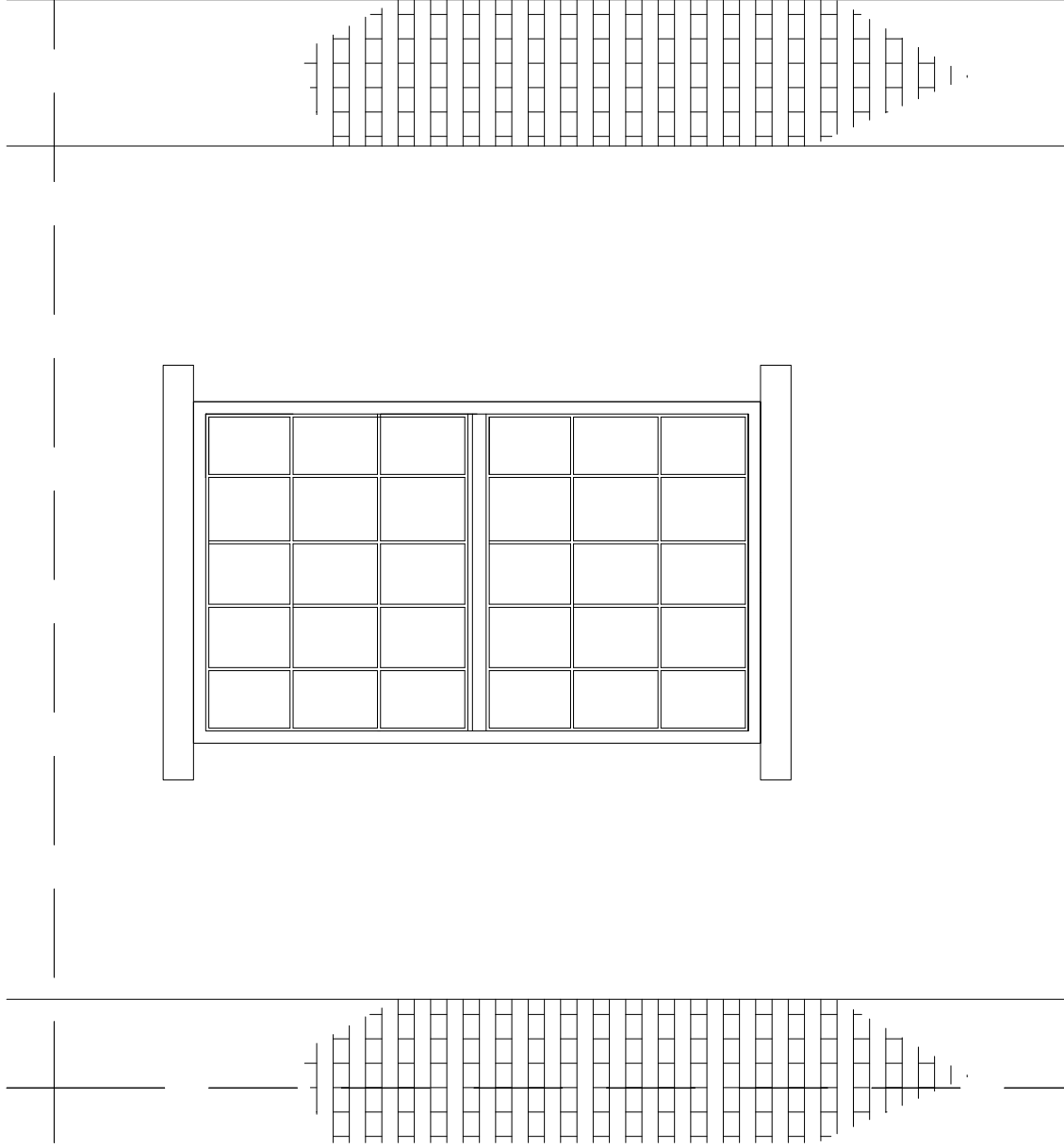
7'-9"

11'-8"

2'-0"

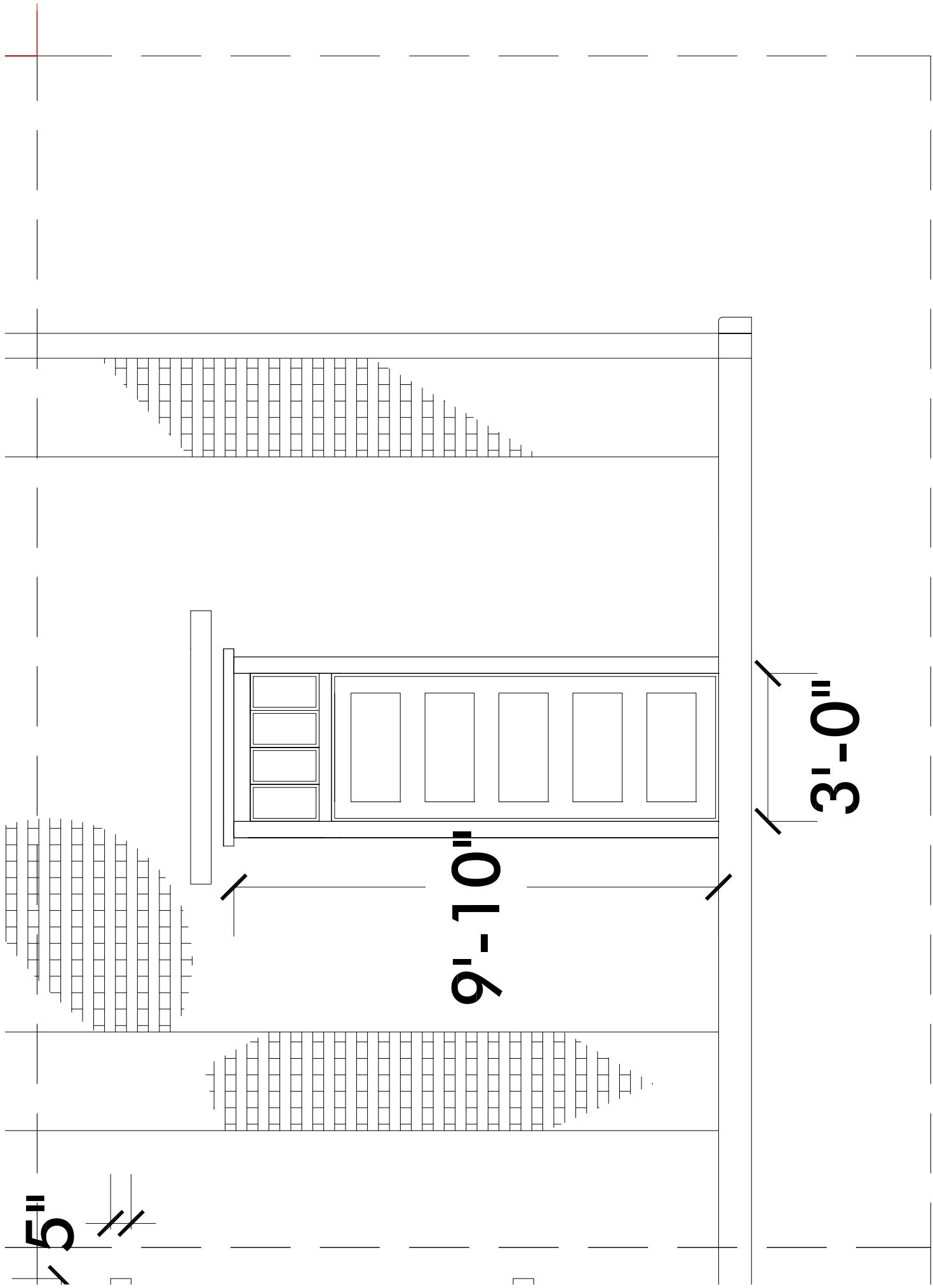
SIDE 2 ELEV - S2E-6

5'-8" 5"



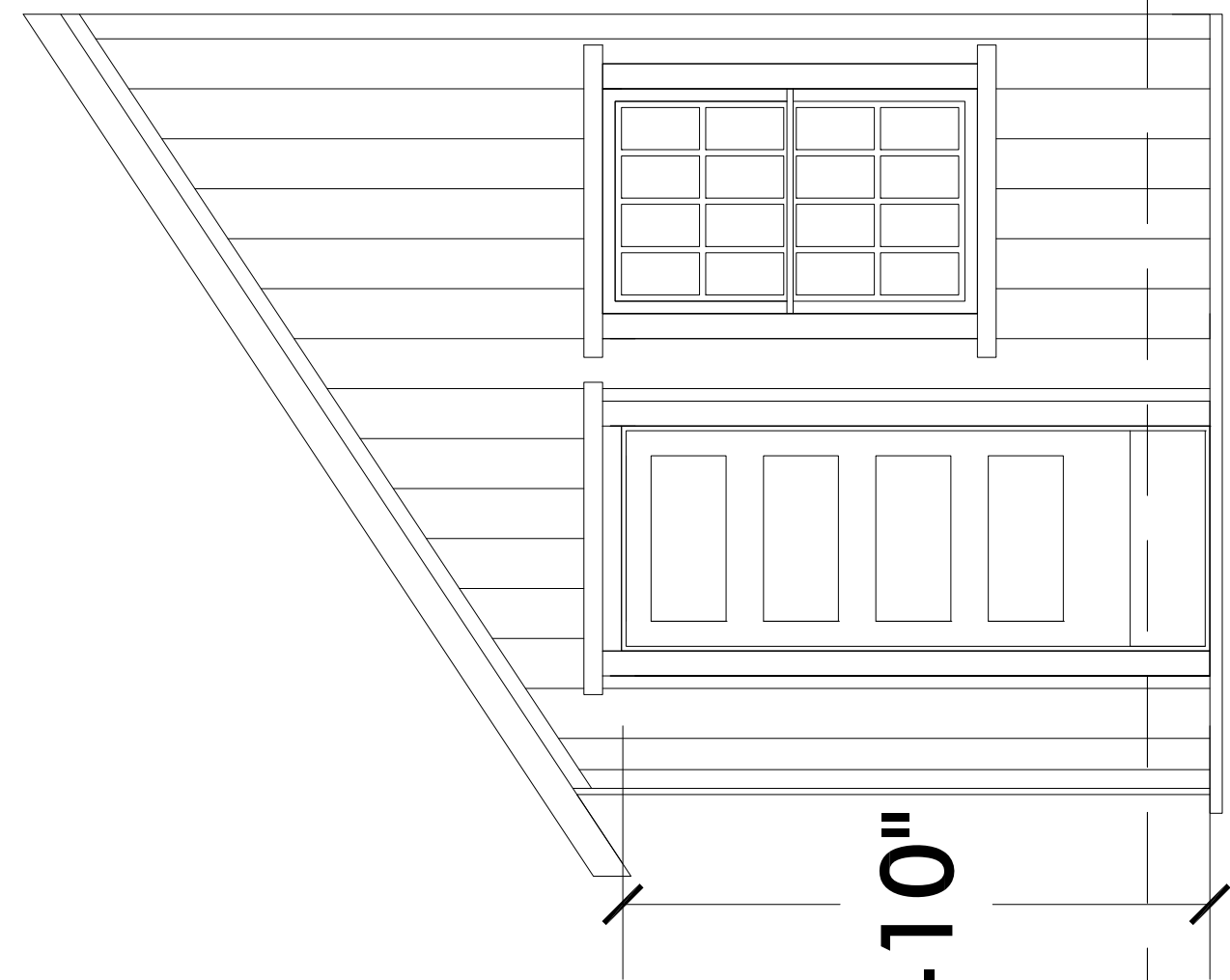
2'-0"

SIDE 2 ELEV - S2E-7



SIDE 2 ELEV - S2E-8

SHED 1



15'-10"

7'-10"

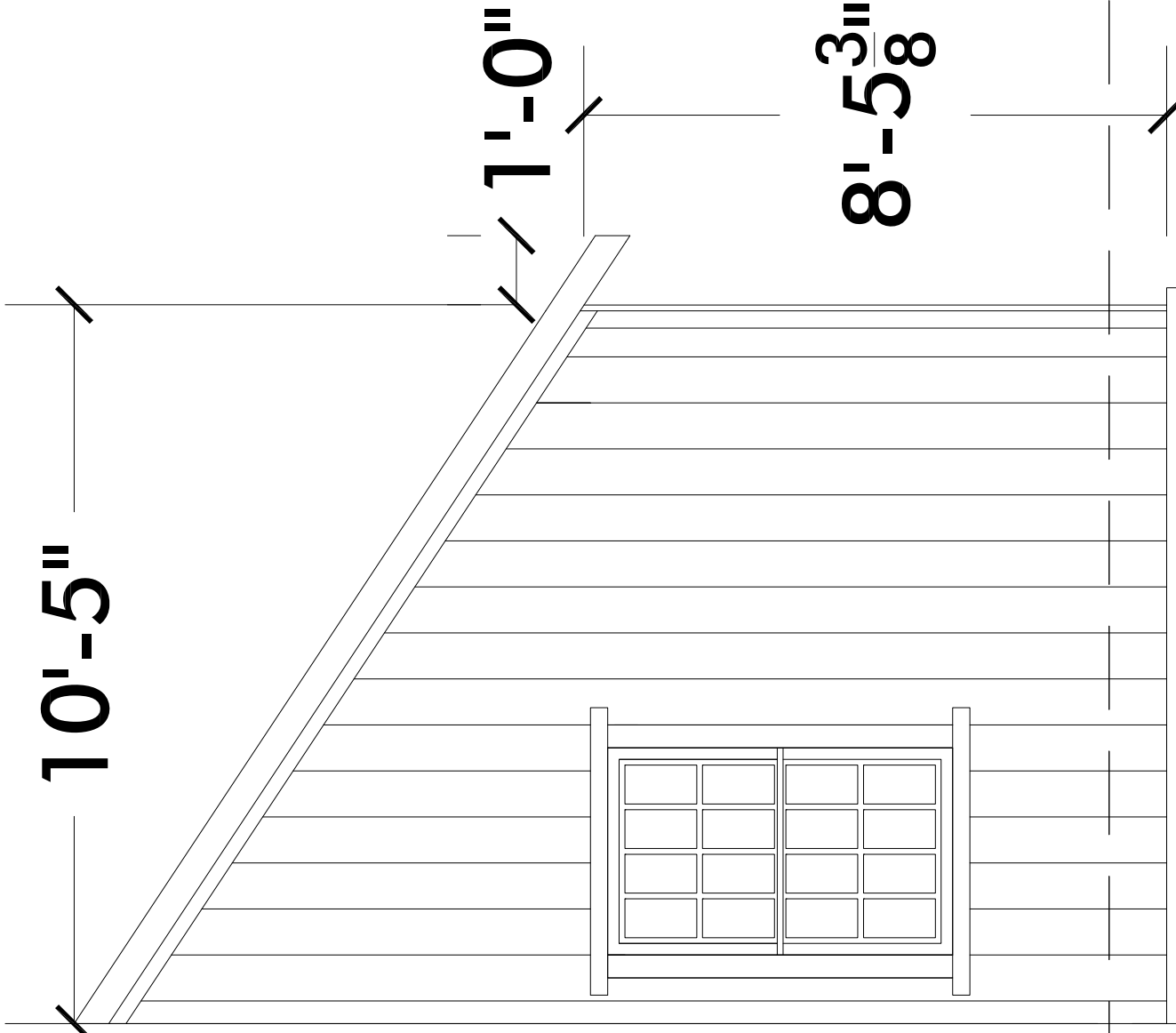
SHED 2

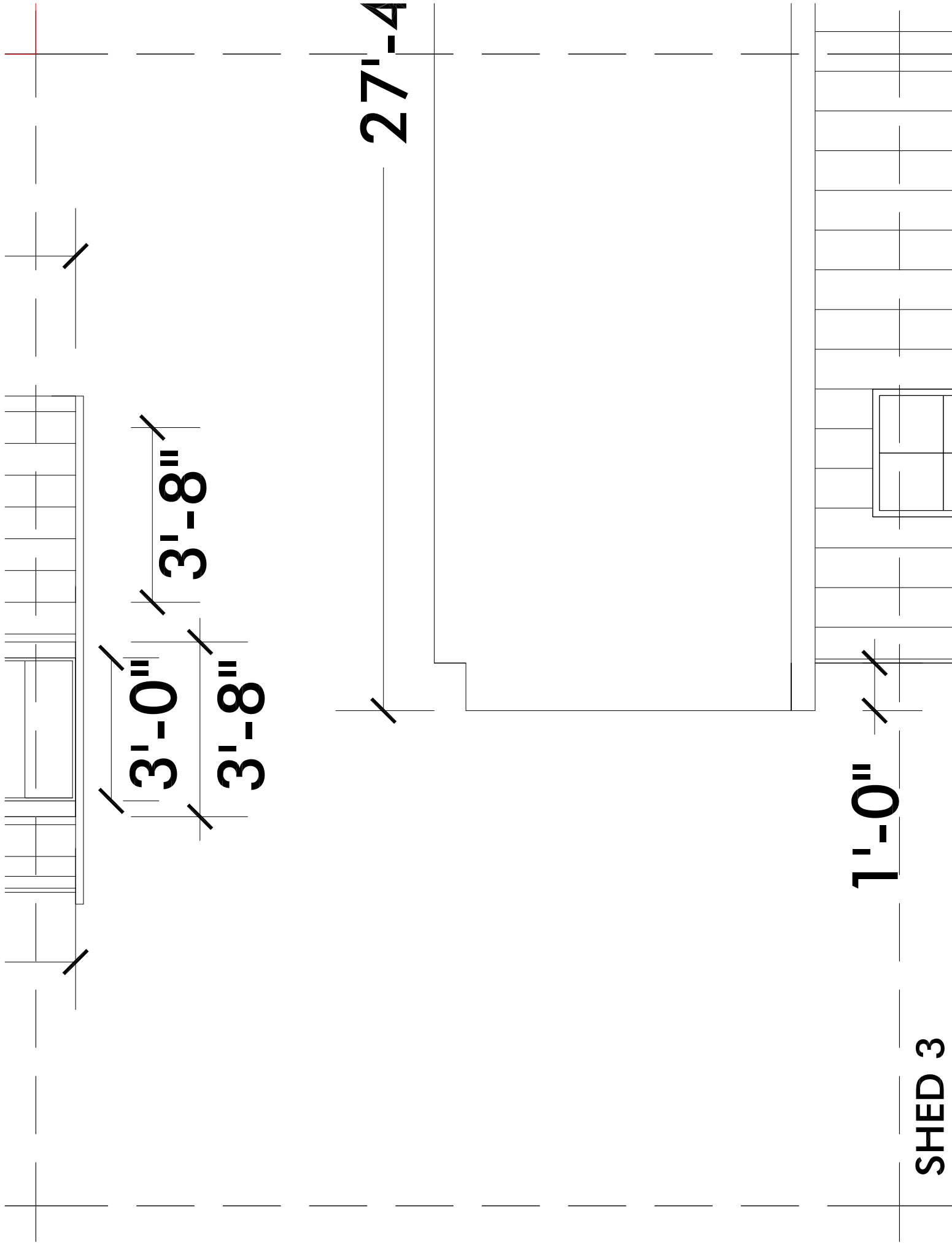
10'-5"

1'-0"

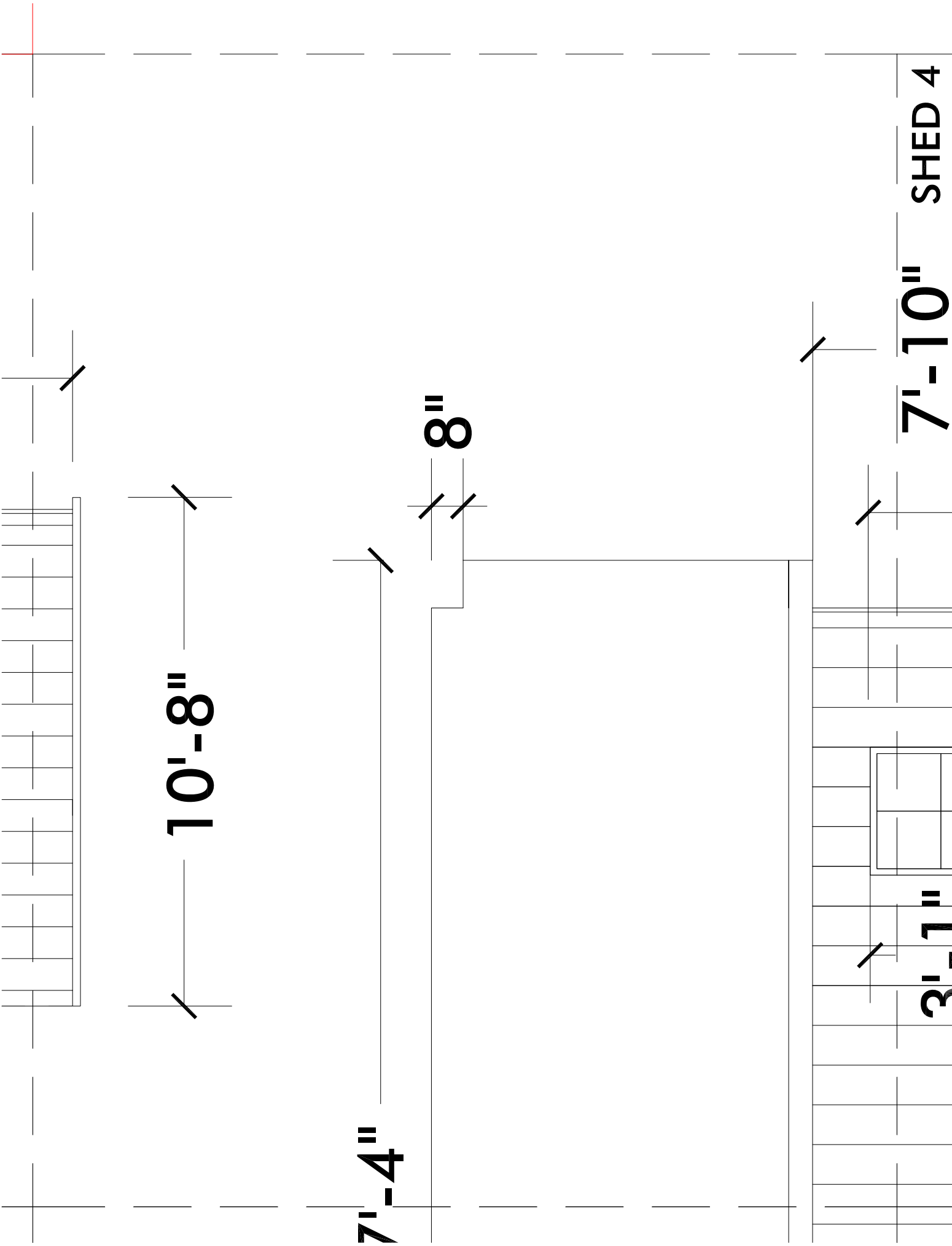
8'-5³/₈"

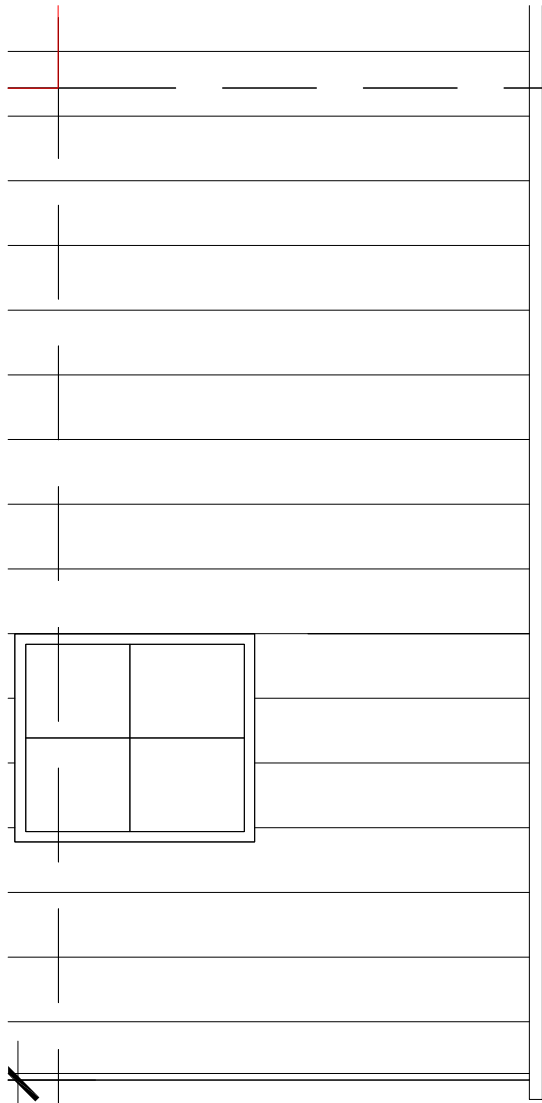
5'-6"





SHED 3

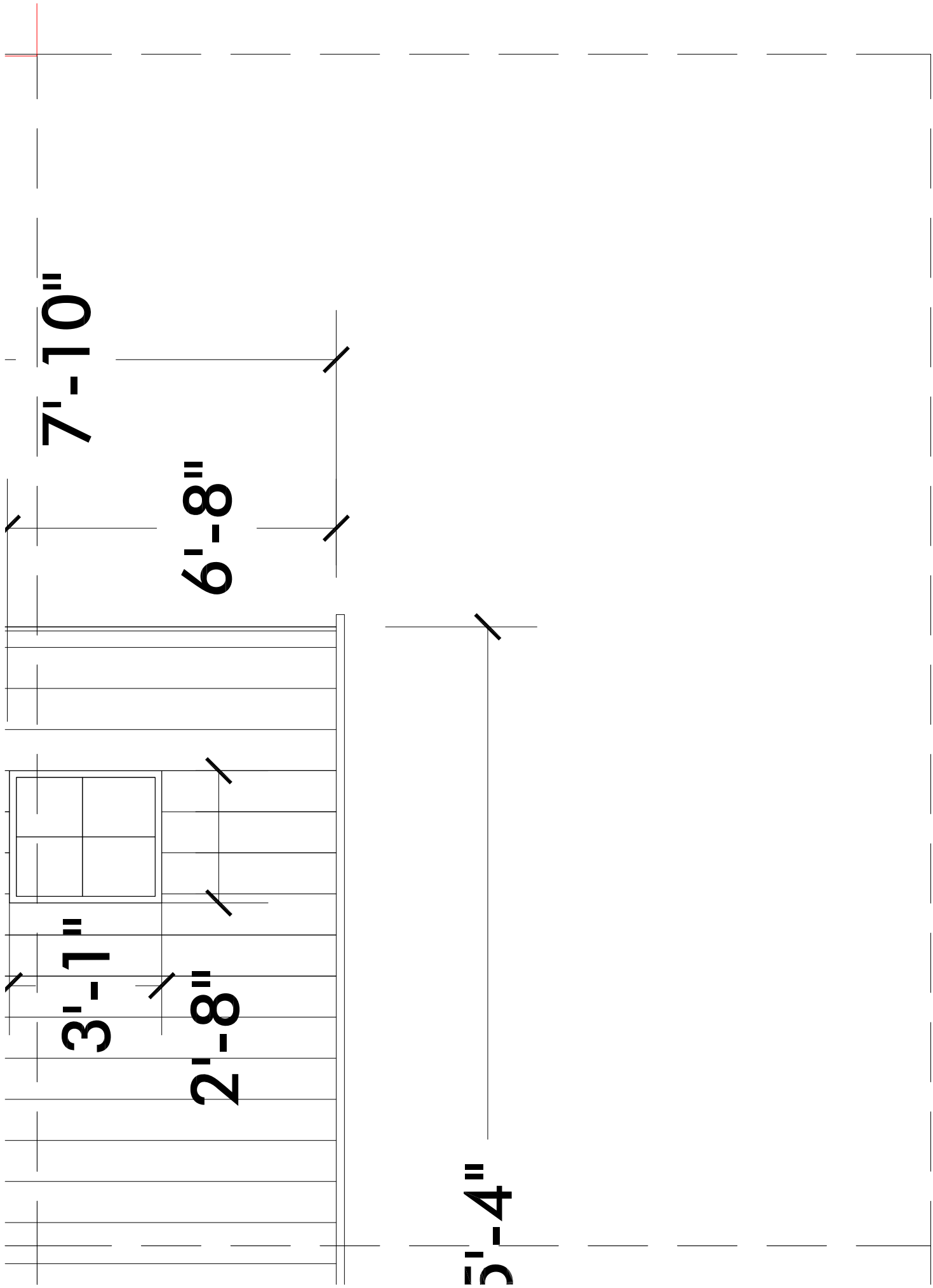




1'-0"

25'-4"

SHED 5



SHED 6