

Branchline station drawings in 1:29 scale

Illustrations by Steve Terry

(redrawn from the January 1949 issue of *Model Railroader* magazine)

Railroads of all types had need for small stations to accommodate rural communities or other little-used places on the line. The one shown here, reproduced by Steve Terry, was a Milwaukee Road station at Sussex, Wisconsin. It is a simple clapboard structure that would make an excellent project for a weekend or two. It is large enough to incorporate facilities for both freight and passenger traffic but small enough to fit into just about any railroad. Construction could be of wood or plastic and the structure is simple enough that it would lend itself well to modifications, additions, and enlargements—how about a bay window on the track side? Although tiny, this structure looks very “railroad-y” and is obviously a station.

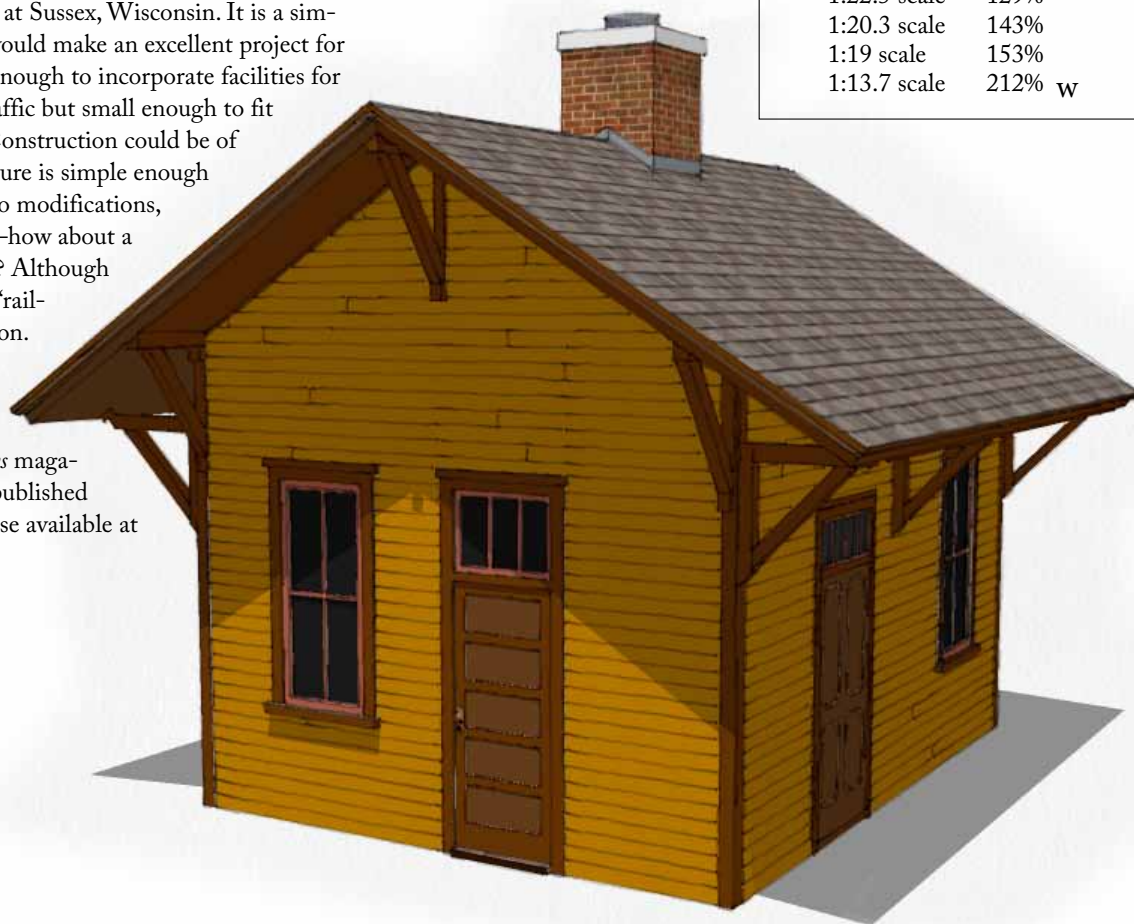
This is an online supplement to the August 2012 issue of *Garden Railways* magazine. To purchase previously published paper plans, see the list of those available at www.sidestreet.info

This tiny branchline station from Sussex, Wisconsin, would look right at home on any garden railway.

Are you working in a different scale?

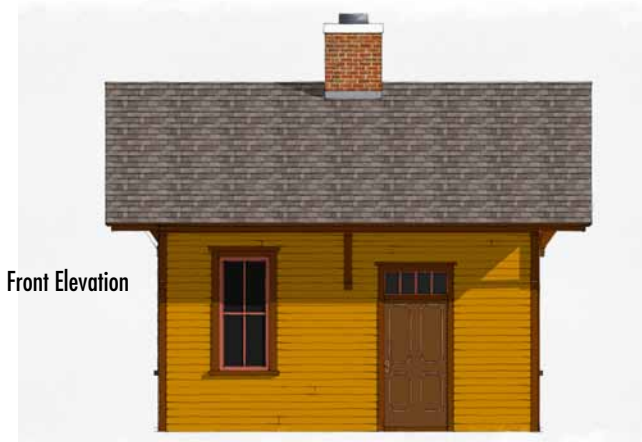
If you're not working in 1:29 scale, print the drawings out at the percentage given below for your scale.

1:32 scale	91%
1:24 scale	121%
1:22.5 scale	129%
1:20.3 scale	143%
1:19 scale	153%
1:13.7 scale	212% w



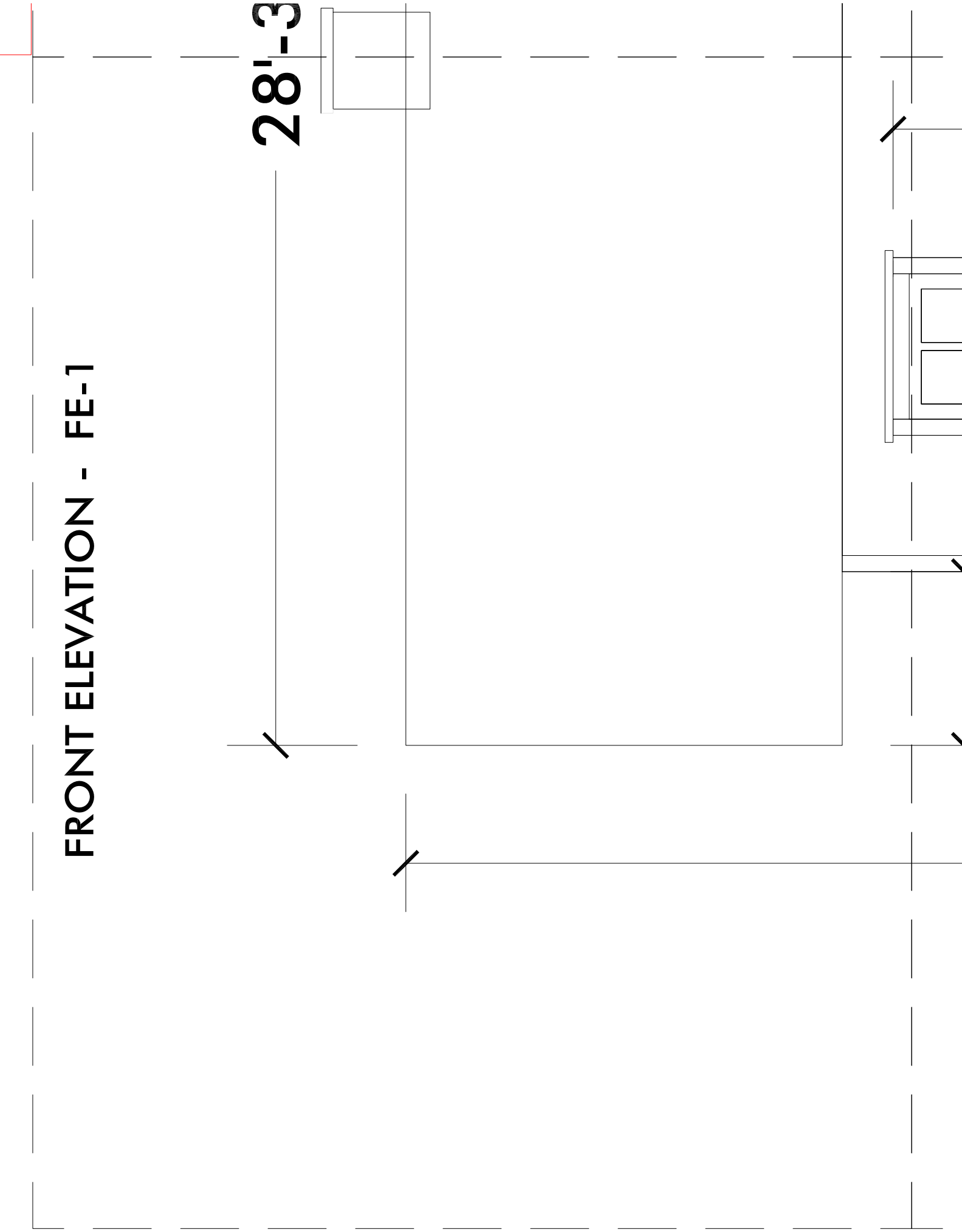
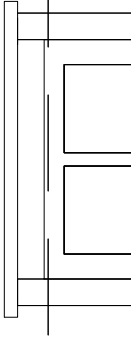
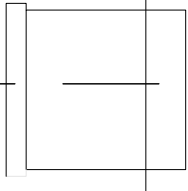
How to assemble the drawings

<p>FE-1</p> <p>Front Elevation</p>	<p>FE-2</p> <p>E1E-1</p> <p>End 1 Elevation</p>	<p>E1E-2</p> <p>EEE-1</p>
<p>FE-3</p>	<p>E1E-3</p>	<p>EEE-2</p>
<p>RE-1</p> <p>Rear Elevation</p>	<p>E2E-1</p> <p>End 2 Elevation</p>	<p>E2E-2</p> <p>Drawings are full size for 1:29 scale</p>
<p>FE-4</p> <p>E2E-3</p>	<p>E2E-4</p>	



FRONT ELEVATION - FE-1

28'-3"

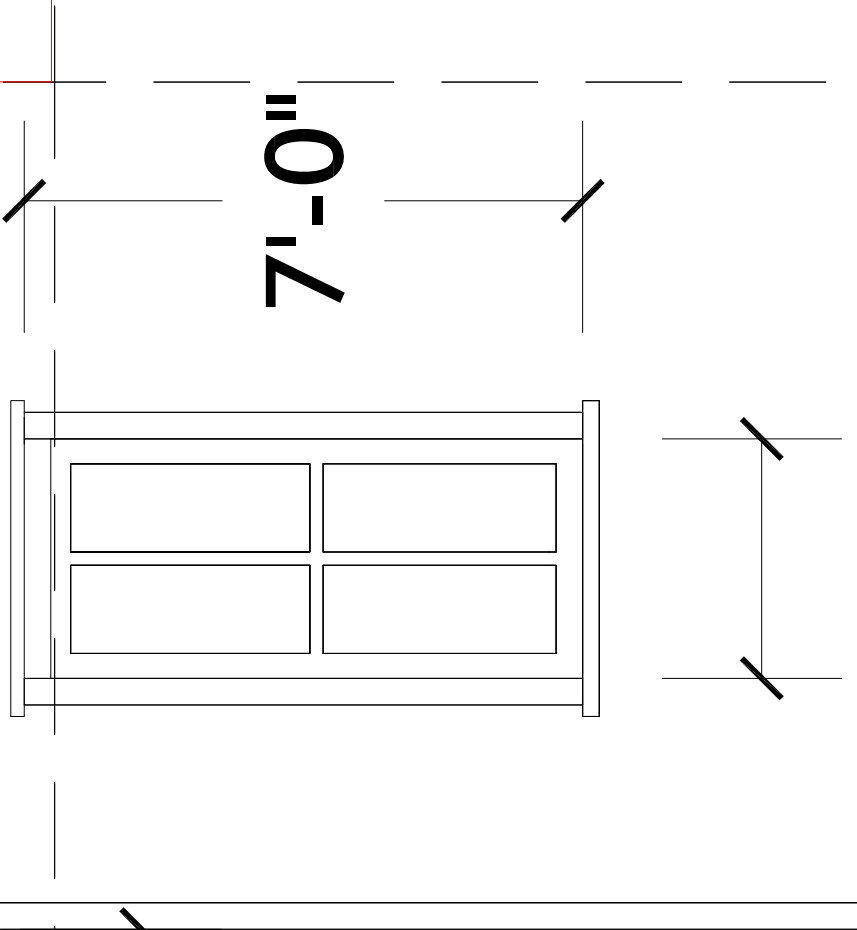


FRONT ELEVATION - FE-2

3'-3"

9'-0"





3'-7"

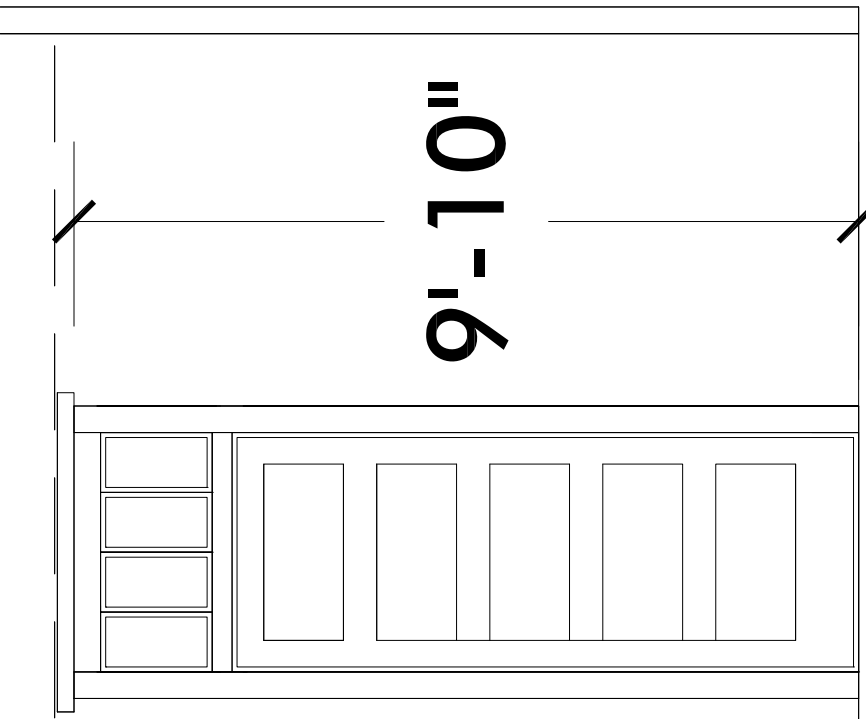
7'-0"

20'-6"

3'-0"

21'-1"

FRONT ELEVATION - FE-3



9'-10"

3'-0"

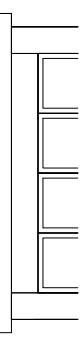
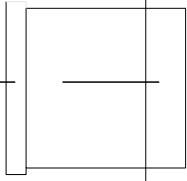
1'-7"

FRONT ELEVATION - FE-4

REAR ELEVATION - RE-1

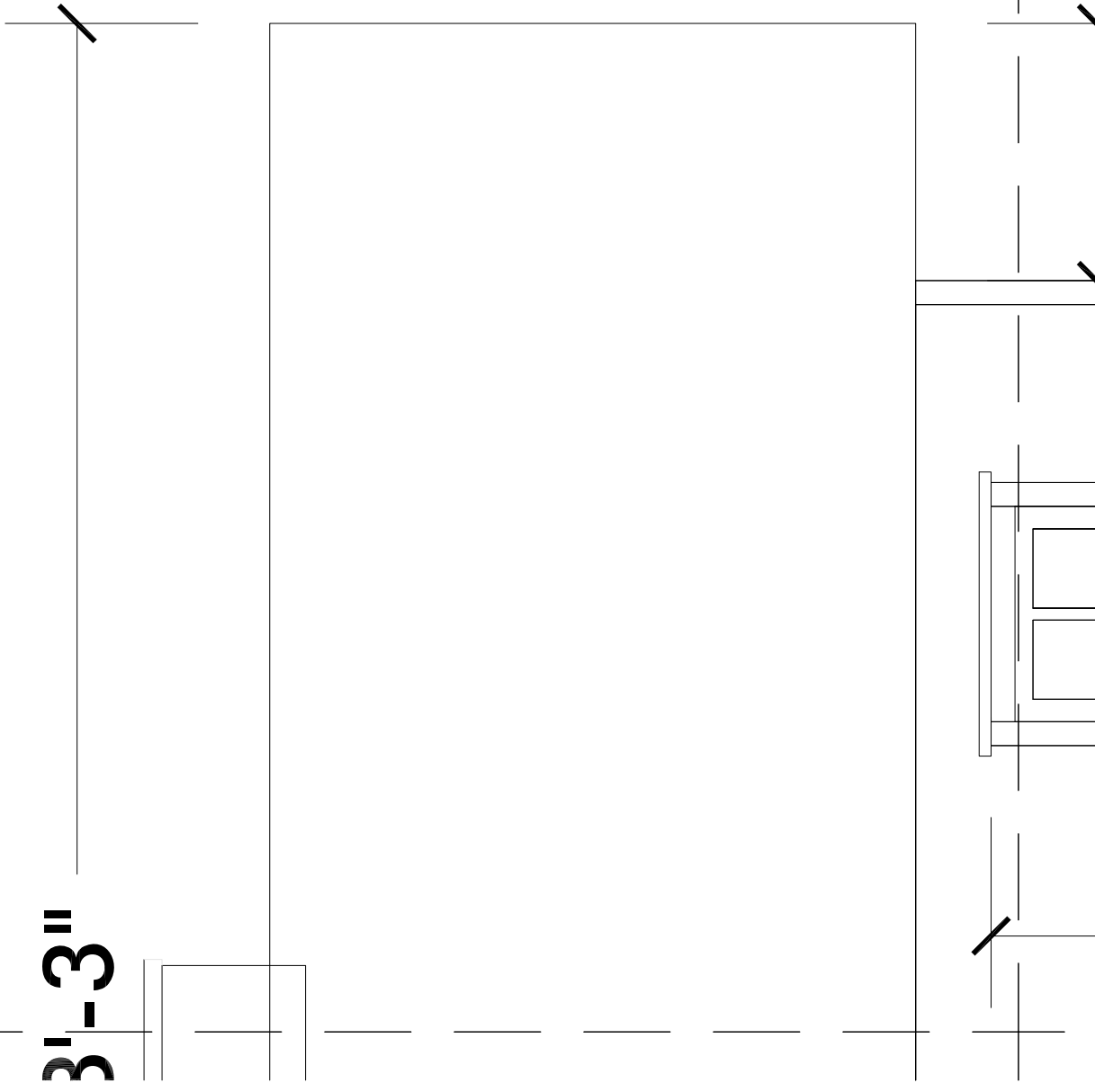
28'-3"

9'-0"



REAR ELEVATION - RE-2

3'-3"



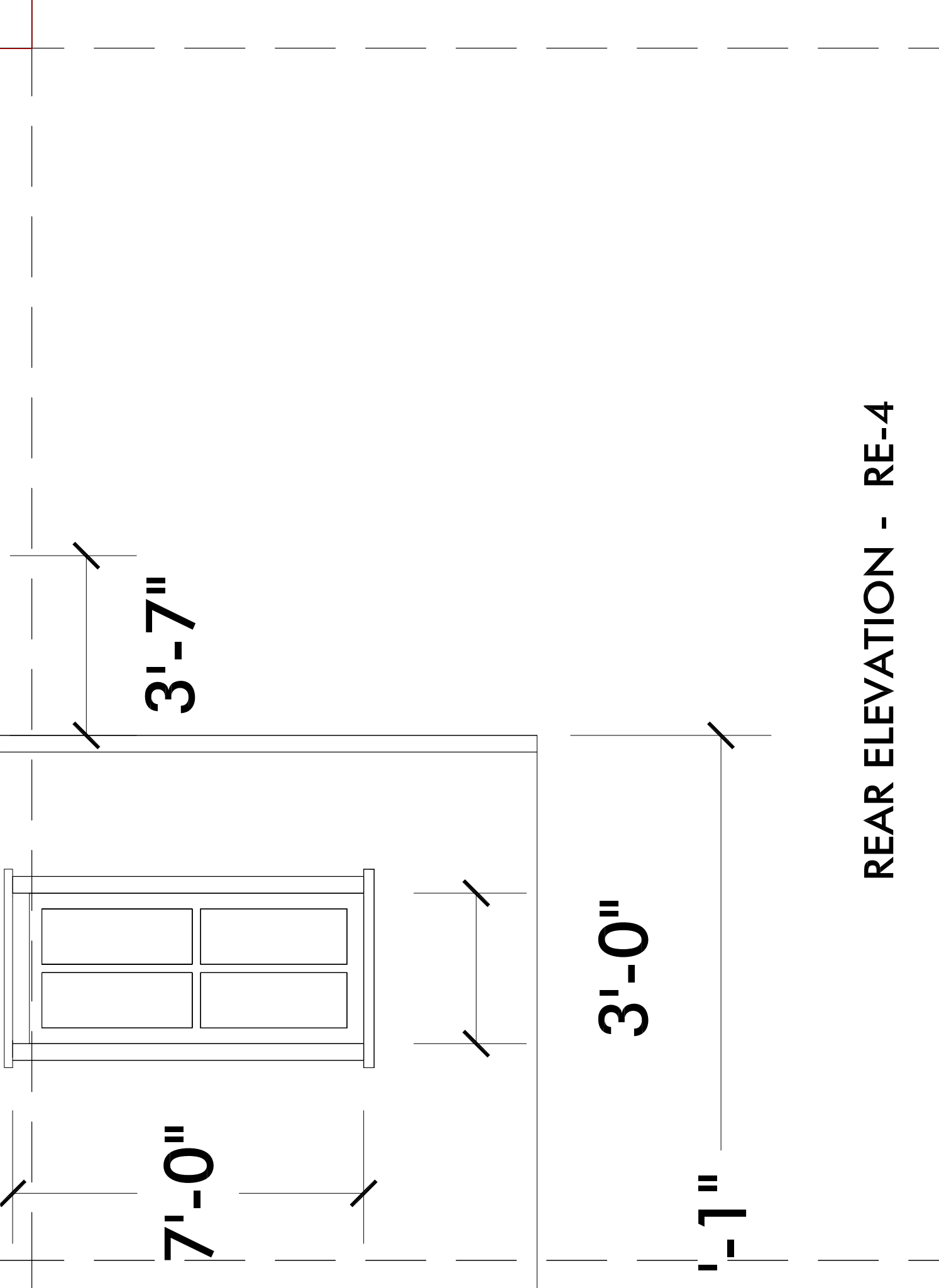
7'

9'-10"

3'-0"

21'-1"

REAR ELEVATION - RE-3



3'-7"

7'-0"

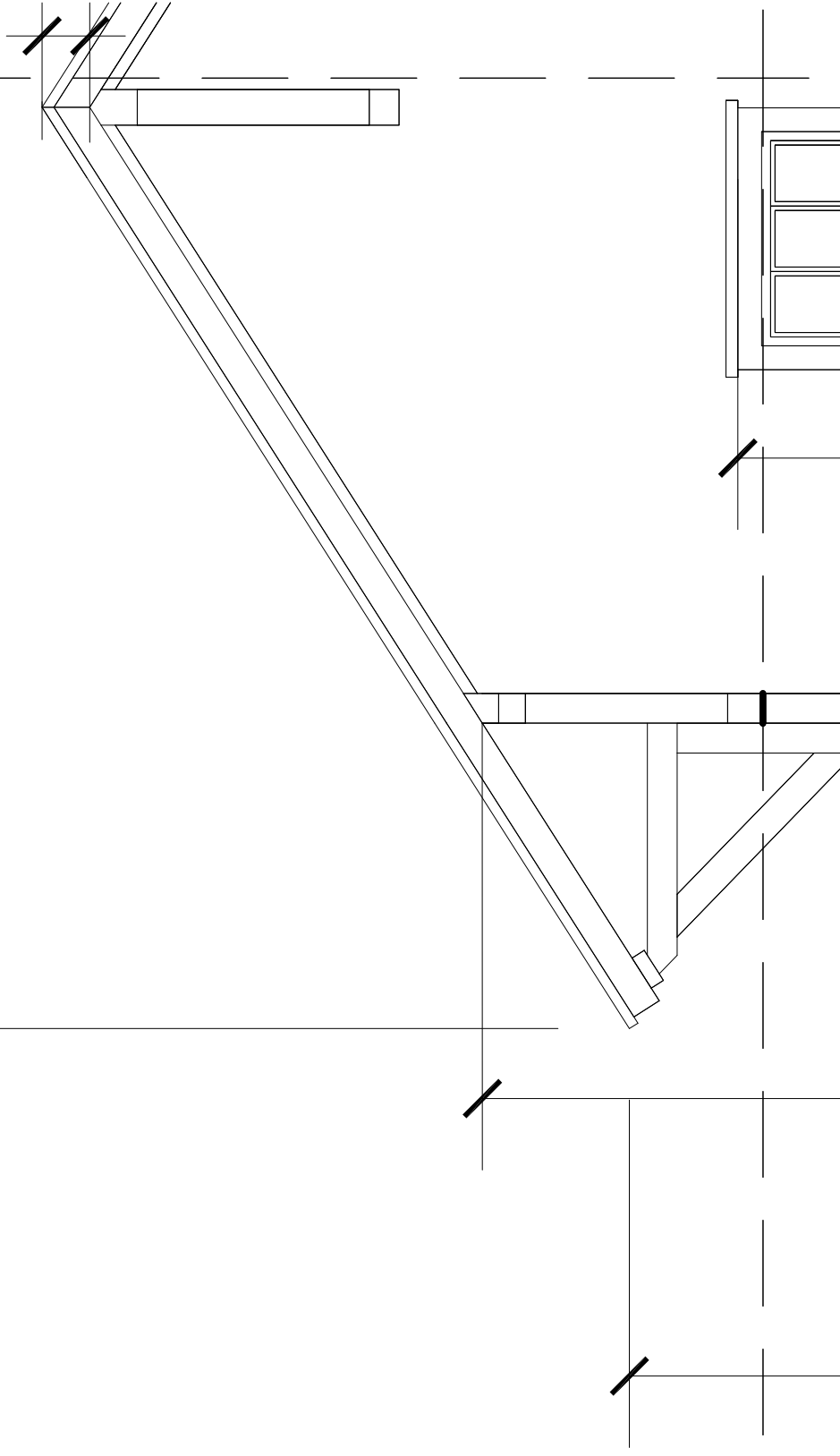
3'-0"

1'-7"

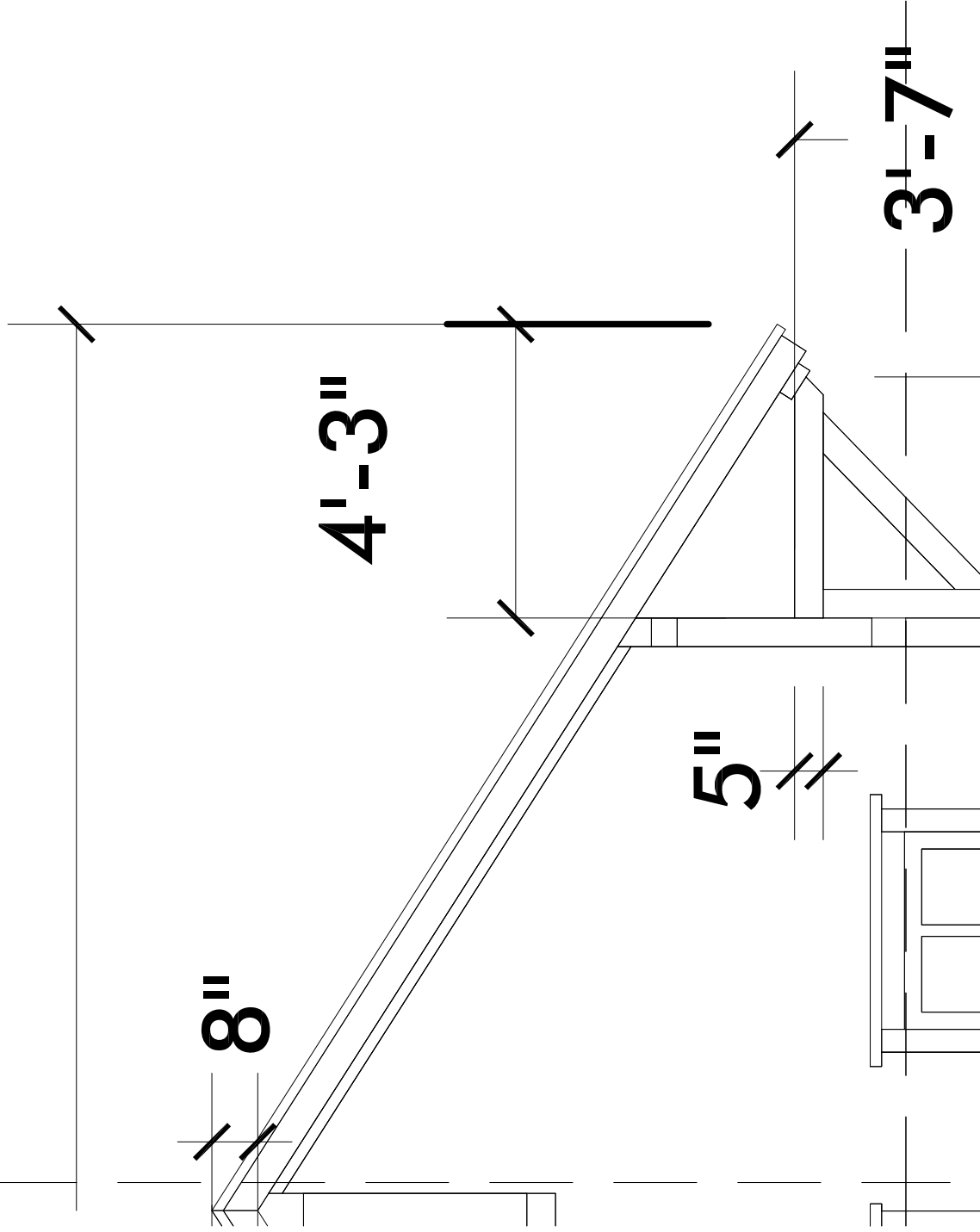
REAR ELEVATION - RE-4

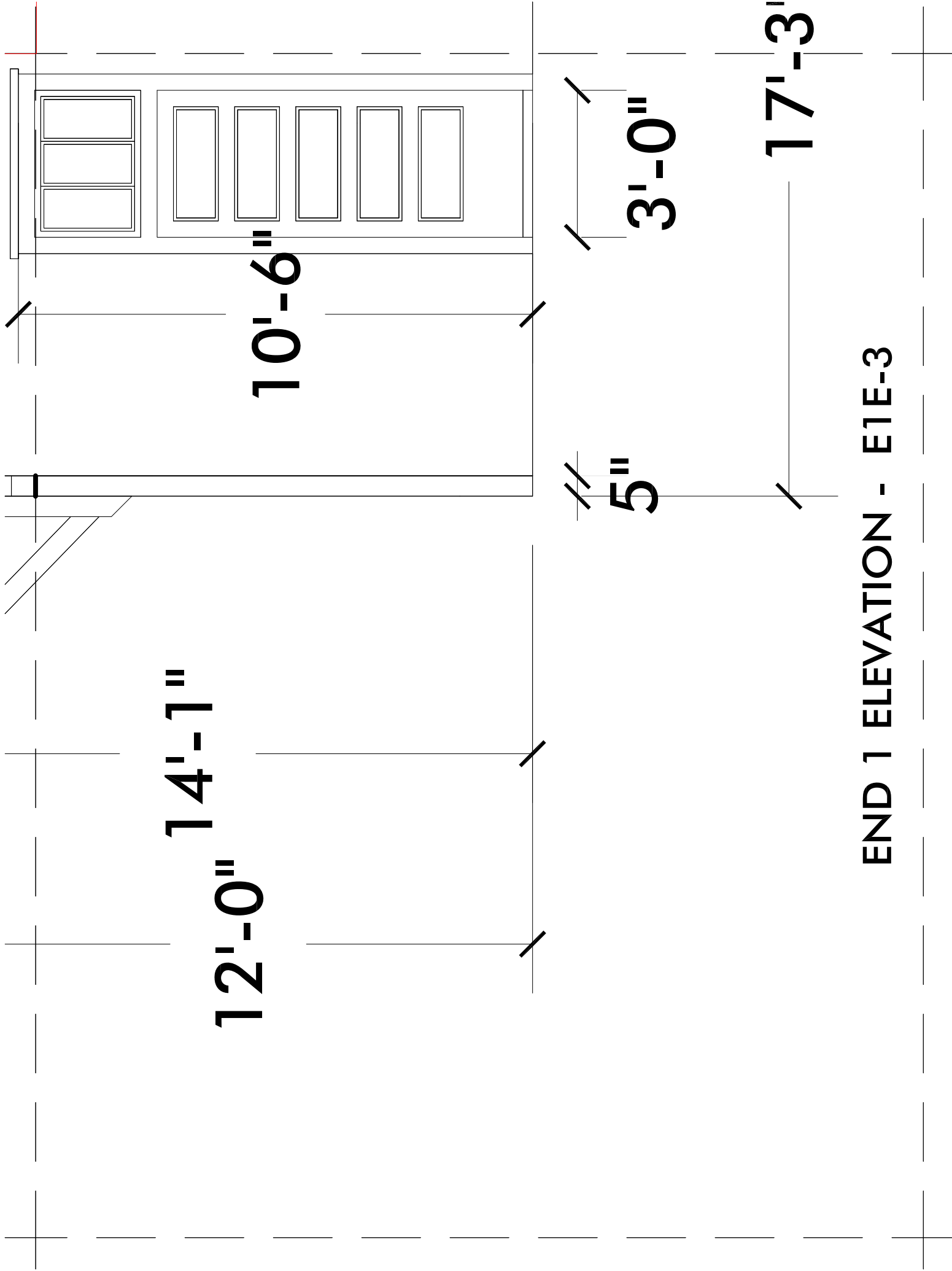
END 1 ELEVATION - E1E-1

25'-9"



END 1 ELEVATION - E1E-2





14'-1"

12'-0"

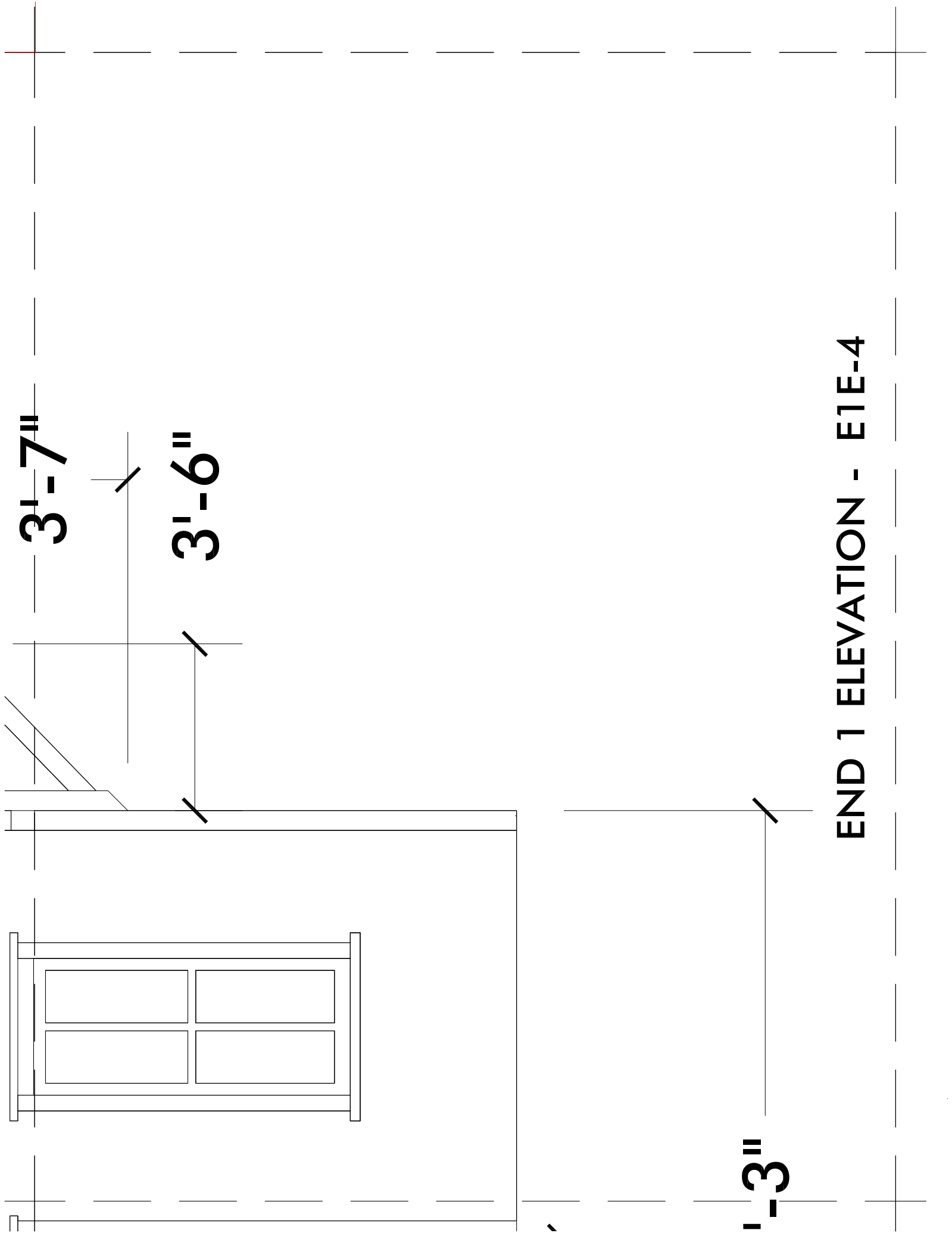
10'-6"

5"

3'-0"

17'-3"

END 1 ELEVATION - E1E-3



3'-7"

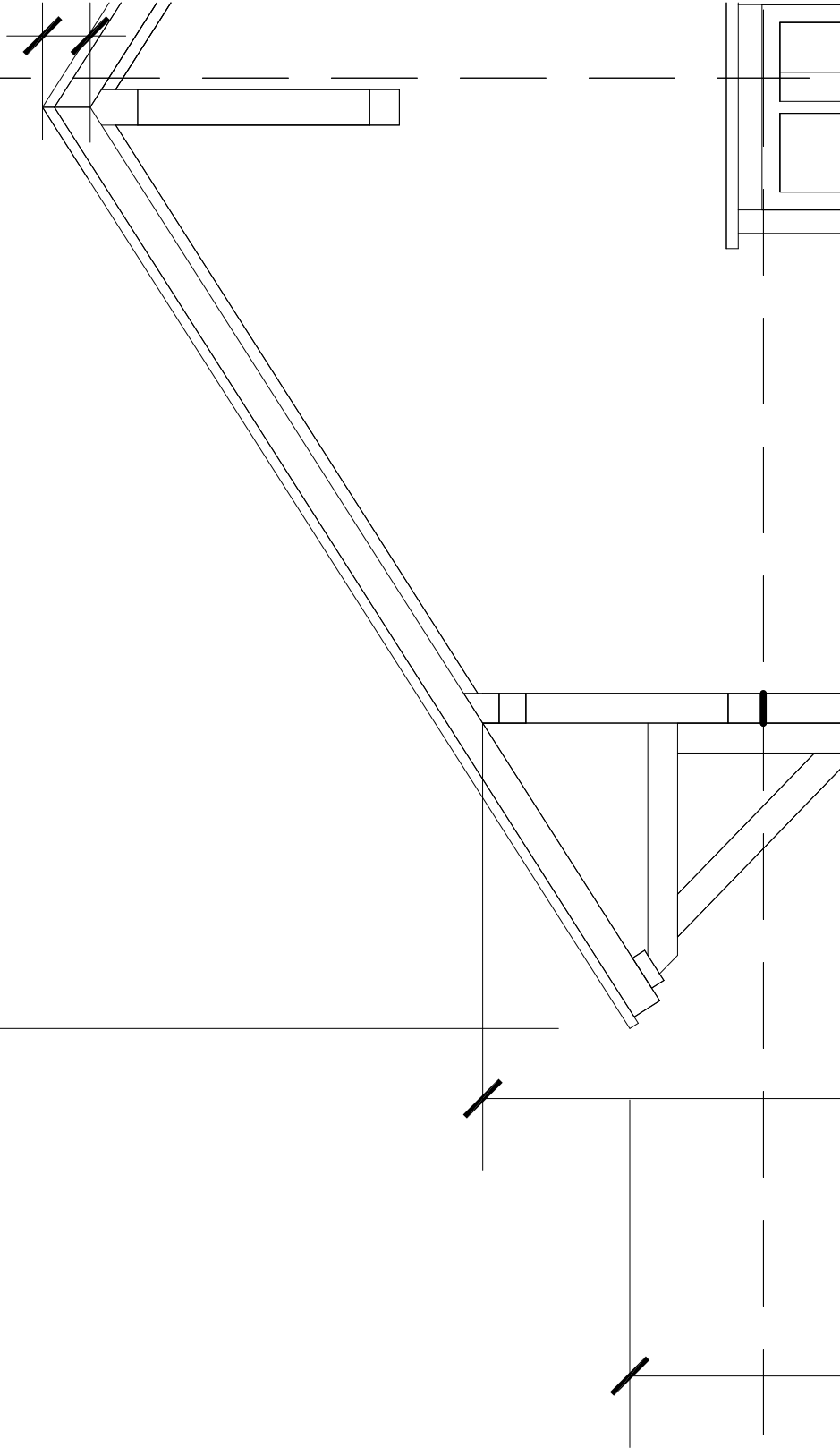
3'-6"

1'-3"

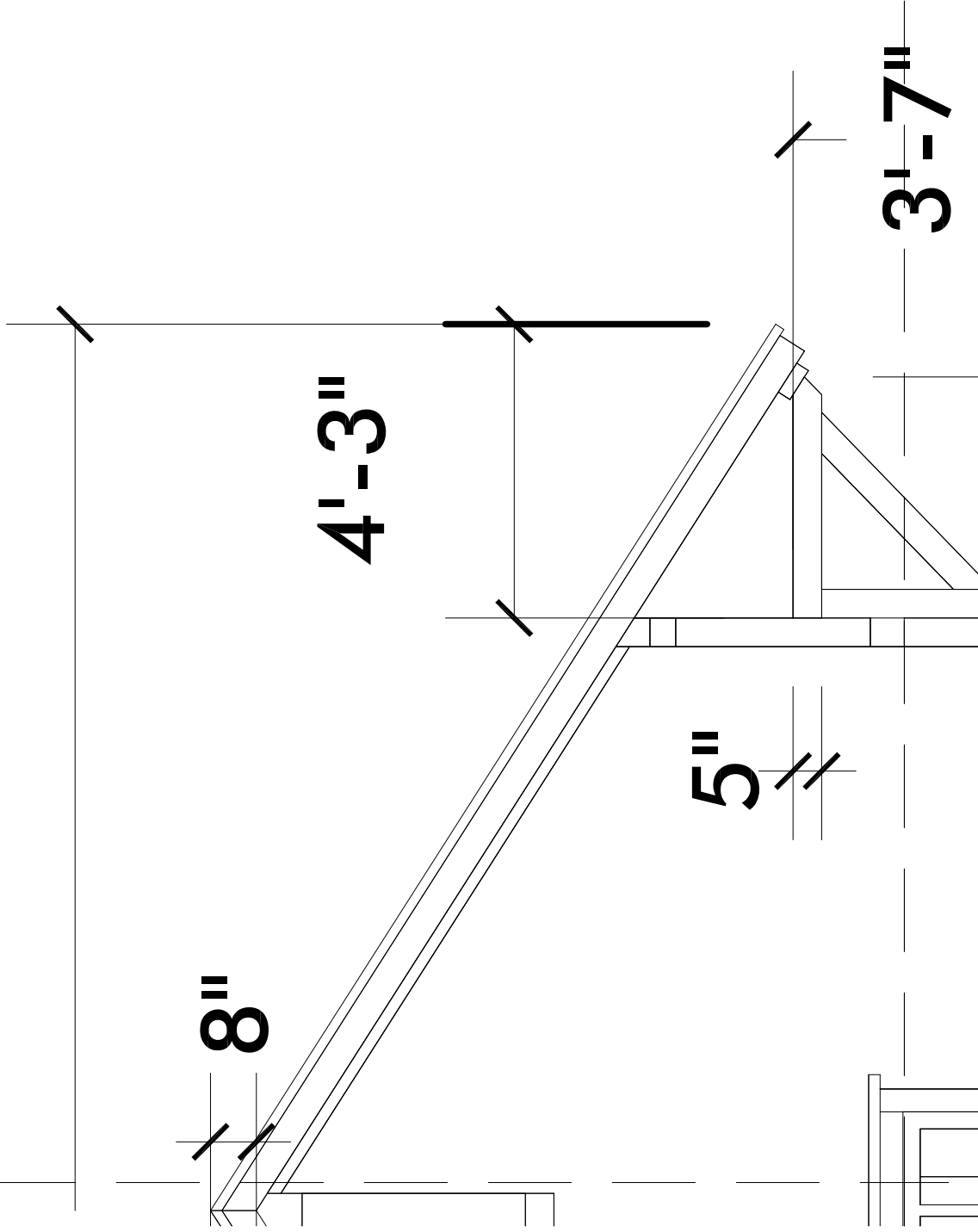
END 1 ELEVATION - E1E-4

END 2 ELEVATION - E2E-1

25'-9"



END 2 ELEVATION - E2E-2



14'-1"

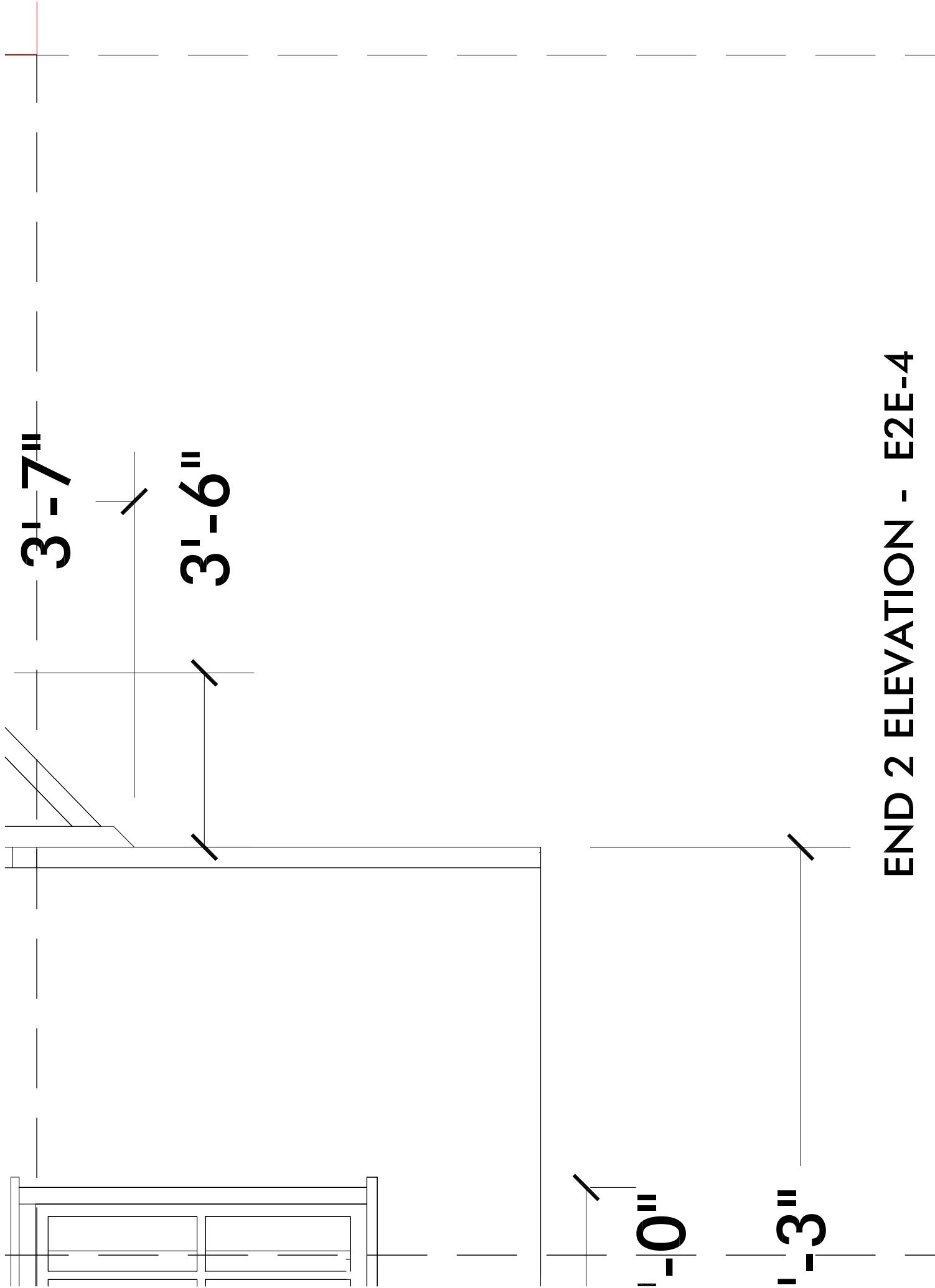
12'-0"

5"

3'-0"

17'-3"

END 2 ELEVATION - E2E-3



3'-7"

3'-6"

1'-0"

1'-3"

END 2 ELEVATION - E2E-4