

Build a 1:24-scale baggage car

Plan set #92

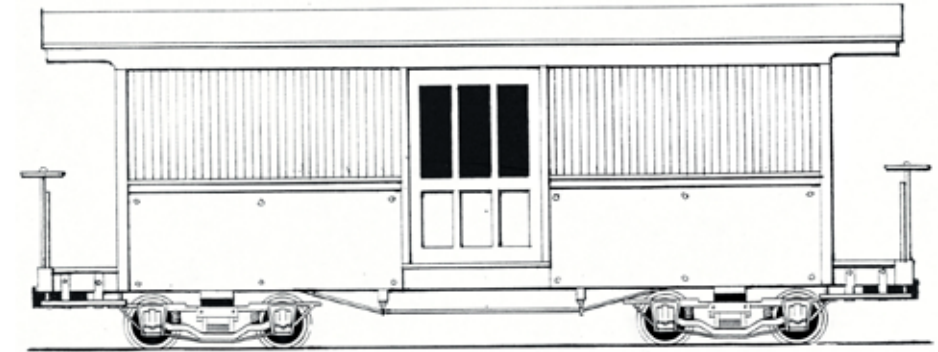
by Ted Stinson | Wiscasset, Maine

This is a generic, 1:24-scale baggage car. It is not based on a car from a railroad long gone. Instead, it is a car for the present. We need, and will soon get, light-rail transport. This will replace vehicles powered by expensive, inefficient, internal-combustion engines. Short trips of around 15 miles will force us to use mass transit.

Here in Maine, where much of the population lives in semi-rural circumstances, a narrow-gauge railroad may be just the answer. It is with that thought in mind that I have developed the Wiscasset & Westport RR, a 30"-gauge short line that serves the transport needs of people living on Westport Island as well as Wiscasset. Since Westport is not heavily populated, it would attract some new industries.

This car would be one of many that would have to run on sharp curves and light rail. Many short lines and, in particular, narrow-gauge railroads with sharp curves, have a need for much shorter cars. This is such a vehicle. It scales out to about 24' long and 7½' wide.

Begin construction with the floor. Use a piece of ⅛" ply, 3½" x 12¾". Plank one side with ¼" x ¼" stripwood. On the other side, add the stripwood framing as per the drawing. Drill holes for the truss rods, which are made from ¼"-diameter rod. Finally, add the handrails at the ends. The chain can be



added later, after the car is more complete.

Now make the car sides and ends. Use ¼"-thick sheet wood and the stripwood called out in the drawing to build the sides and ends. Use ¼"-thick scribed wood to represent the wood siding, and cardstock for the metal siding. Assemble the substructure according to the detail (though the detail does not show the siding, it should be added before assembly). This should just fit on the previously assembled floor (don't glue it at this time).

When the sides and ends are assembled to your satisfaction, the roof can be cut and glued in place. At this point, seal the inside, as well as the outside, of the car body with clear lacquer, sanded lightly after it dries. Stuff the car full of paper towels—enough to block the spray paint from reaching the inside. Now, using Krylon-brand spray paint (not the type labeled "Fusion"), apply two light coats of paint. Allow to dry 48 hours before handling. The bottom of the car can be brush-painted flat black.

All details added from this point should be prepainted before gluing in place. To

complete the car, make the steps. Add the chains and brake wheels. You should be able to remove the body of the car from the floor. This will allow later additions inside. Add trucks (NENG #20 shown), couplers (Kadee #805 shown), and lettering of your choice.

This is an online supplement to the June 2009 issue of *Garden Railways* magazine. To purchase previously published paper plans, see the list of those available at www.side-street.info

A kit for this baggage car is available from Northeast Narrow Gauge for \$50 + \$7 s&h (to the US). Order from Northeast Narrow Gauge, PO Box 191, Wiscasset ME 04578. Web site: www.nemodel.com Figures in 1:24 scale are made by Preiser and are available at most hobby shops.

© 2009 by *Garden Railways* and Northeast Narrow Gauge. These drawings may be reproduced by individual modelers for their own personal use. Copying for any commercial use or for distribution is prohibited without written consent from the publisher.

Are you working in a different scale?

If you are working in 1:22.5 scale, enlarge these drawings to 107%.

If you are working in 1:20.3 scale, enlarge these drawings to 118%.

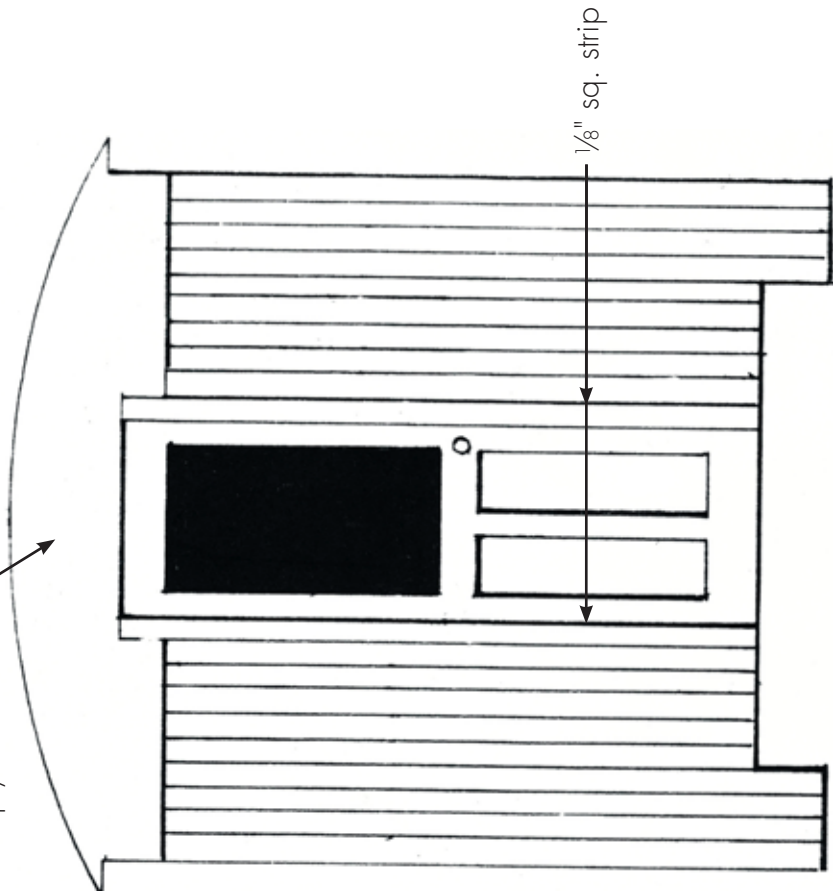
If you are working in 16mm scale (1:19), enlarge these drawings to 126%.

If you are working in ⅝" scale (1:13.7) enlarge these drawings to 175%.

Finished end

$\frac{1}{8}$ " ply fascia

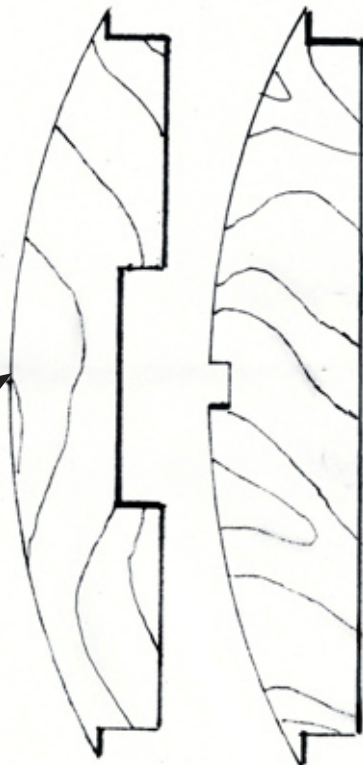
Sub end
Cut 2 from $\frac{1}{16}$ " sheet



$\frac{1}{8}$ " sq. strip

$\frac{1}{8}$ " plywood parts

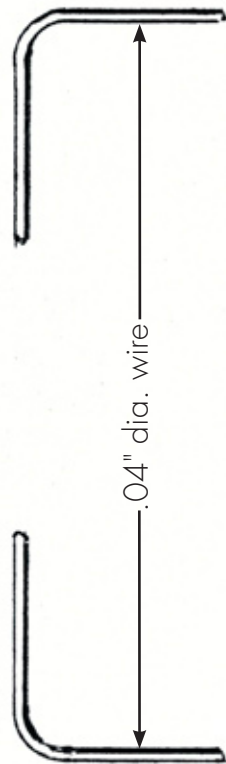
end fascia - cut 2

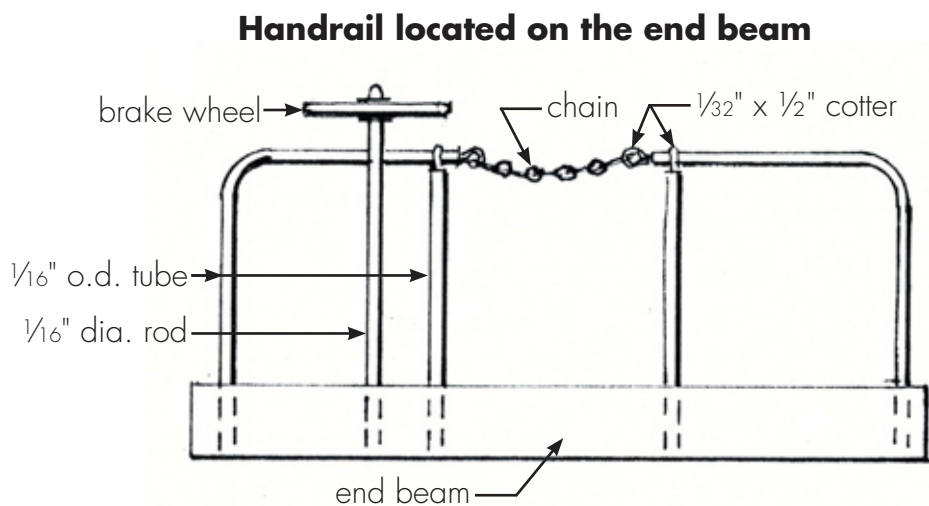
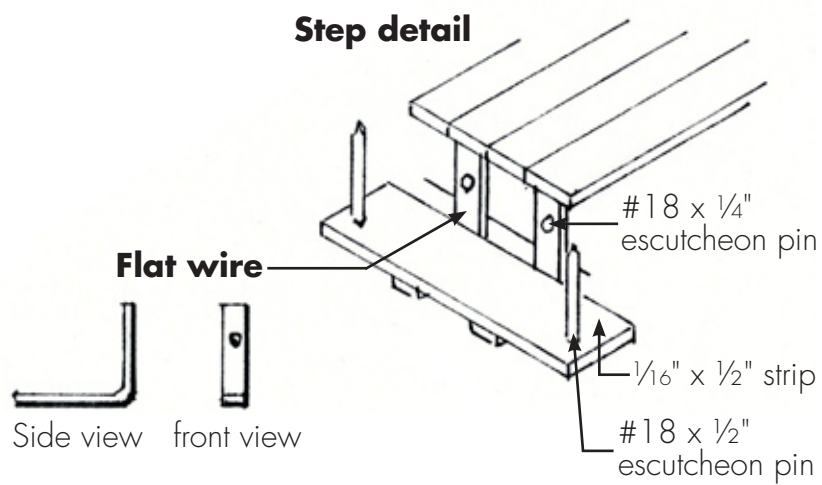
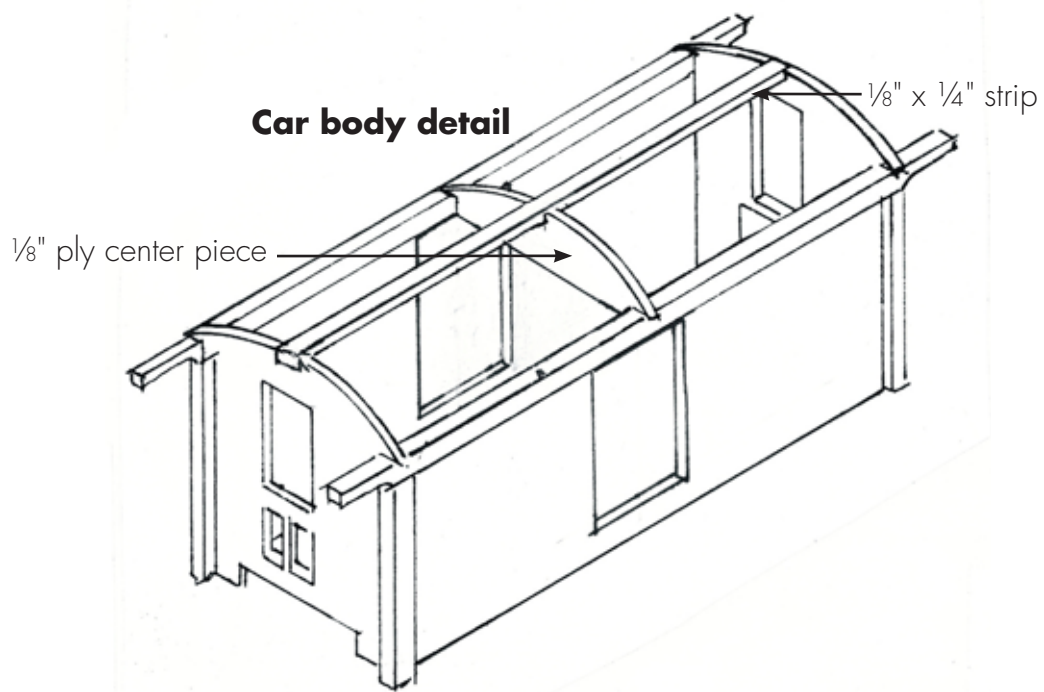


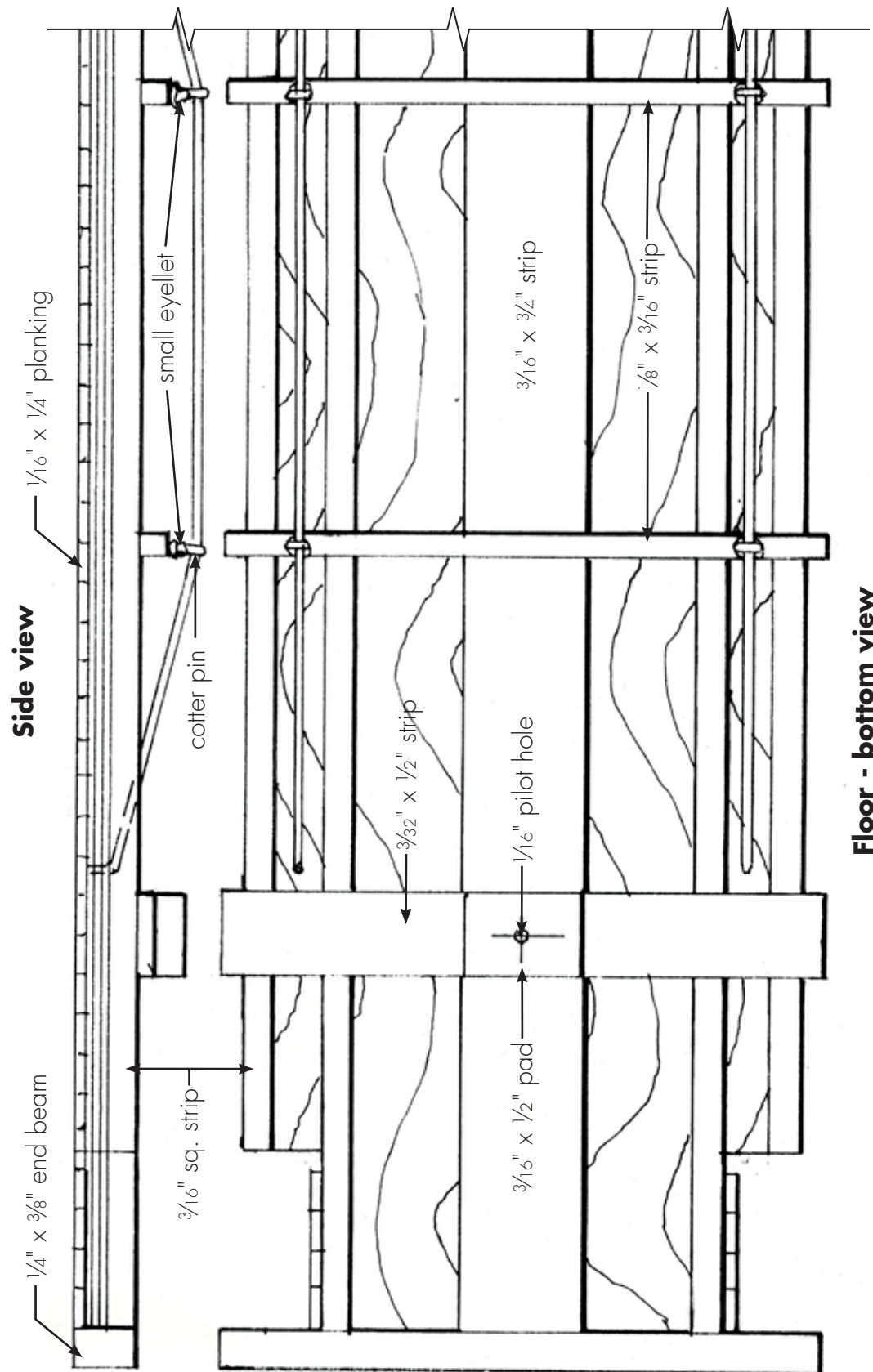
Side view



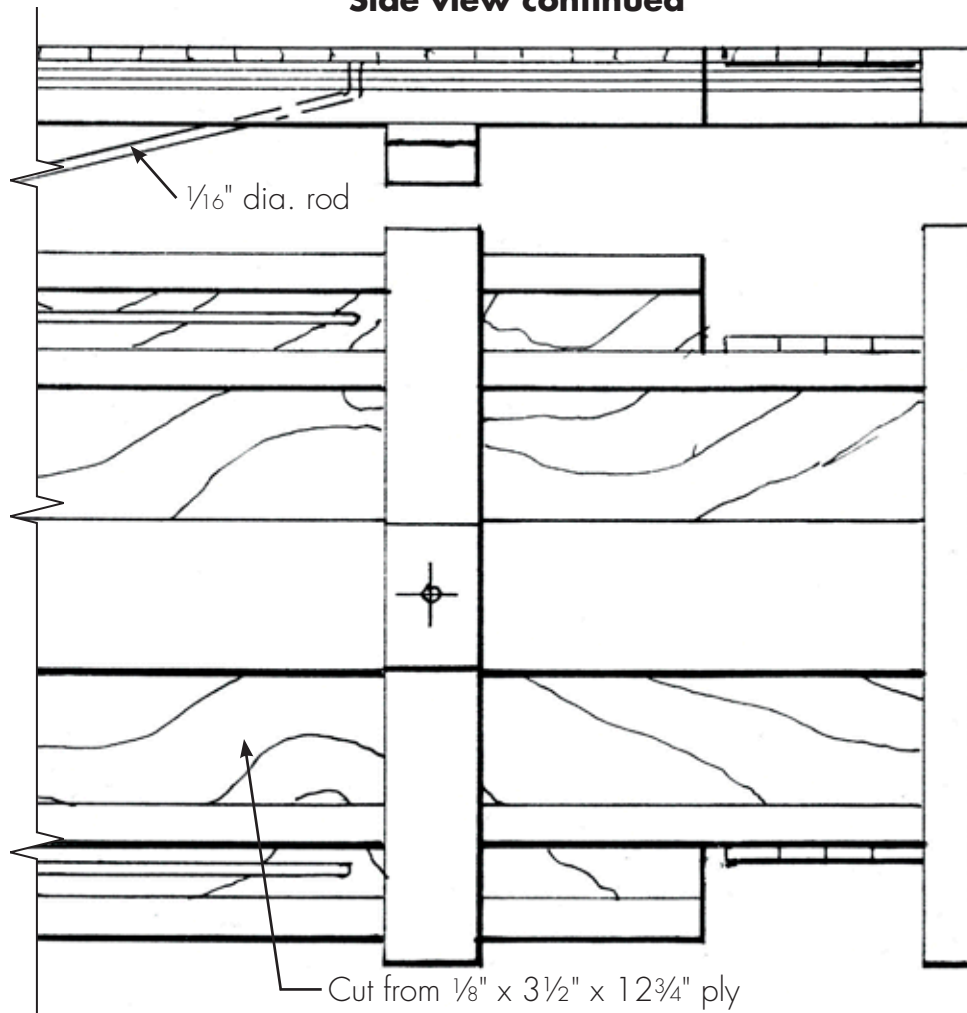
Handrail located on car end







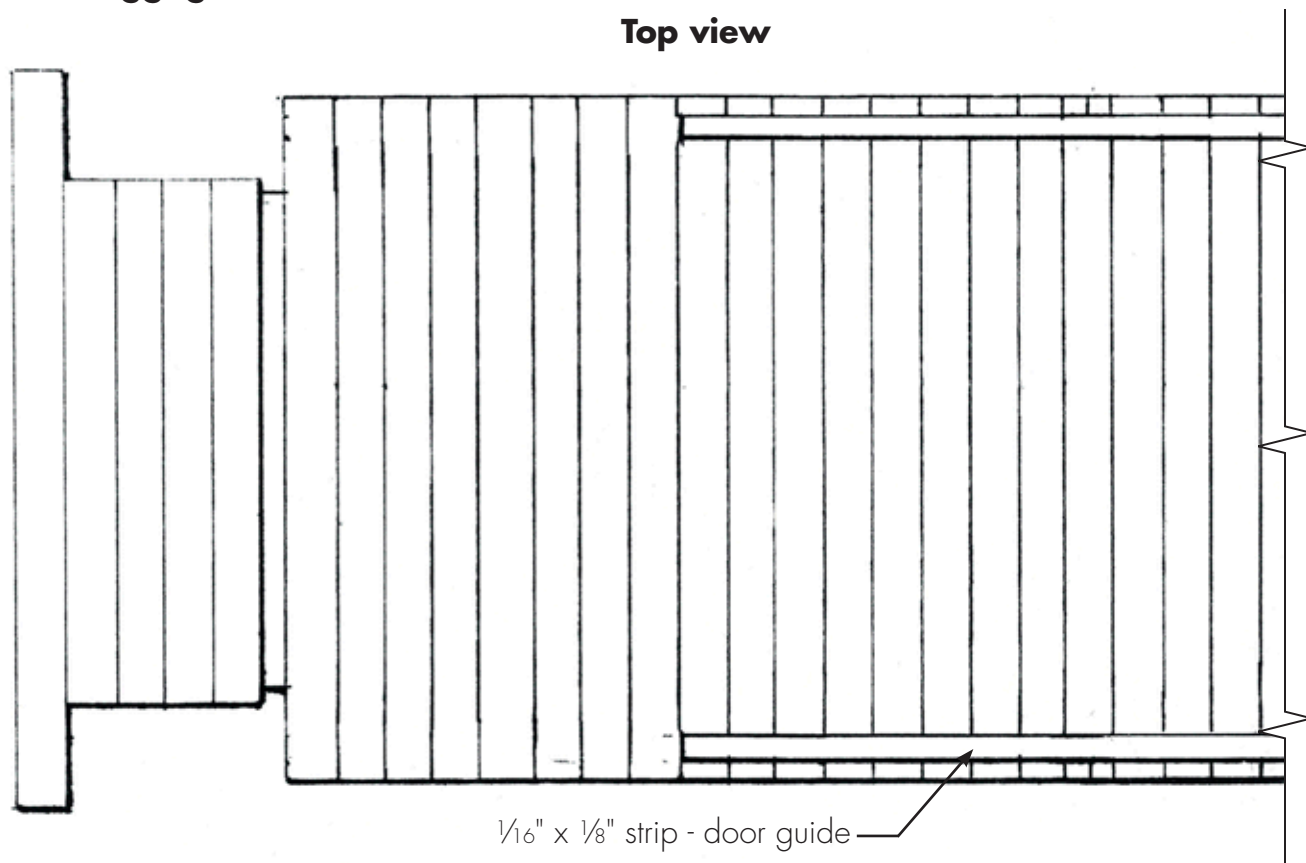
Side view continued



Floor - bottom view

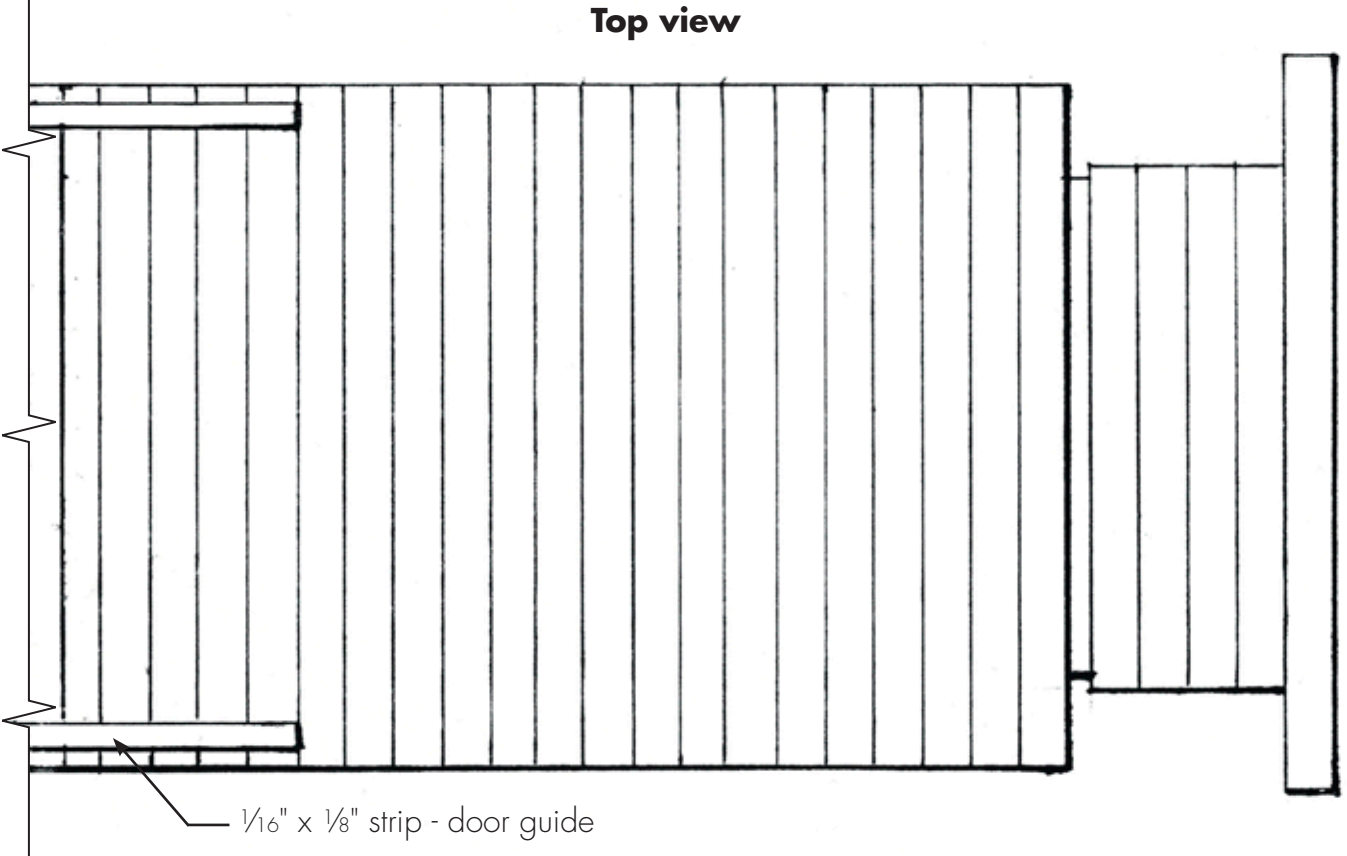
Baggage car interior

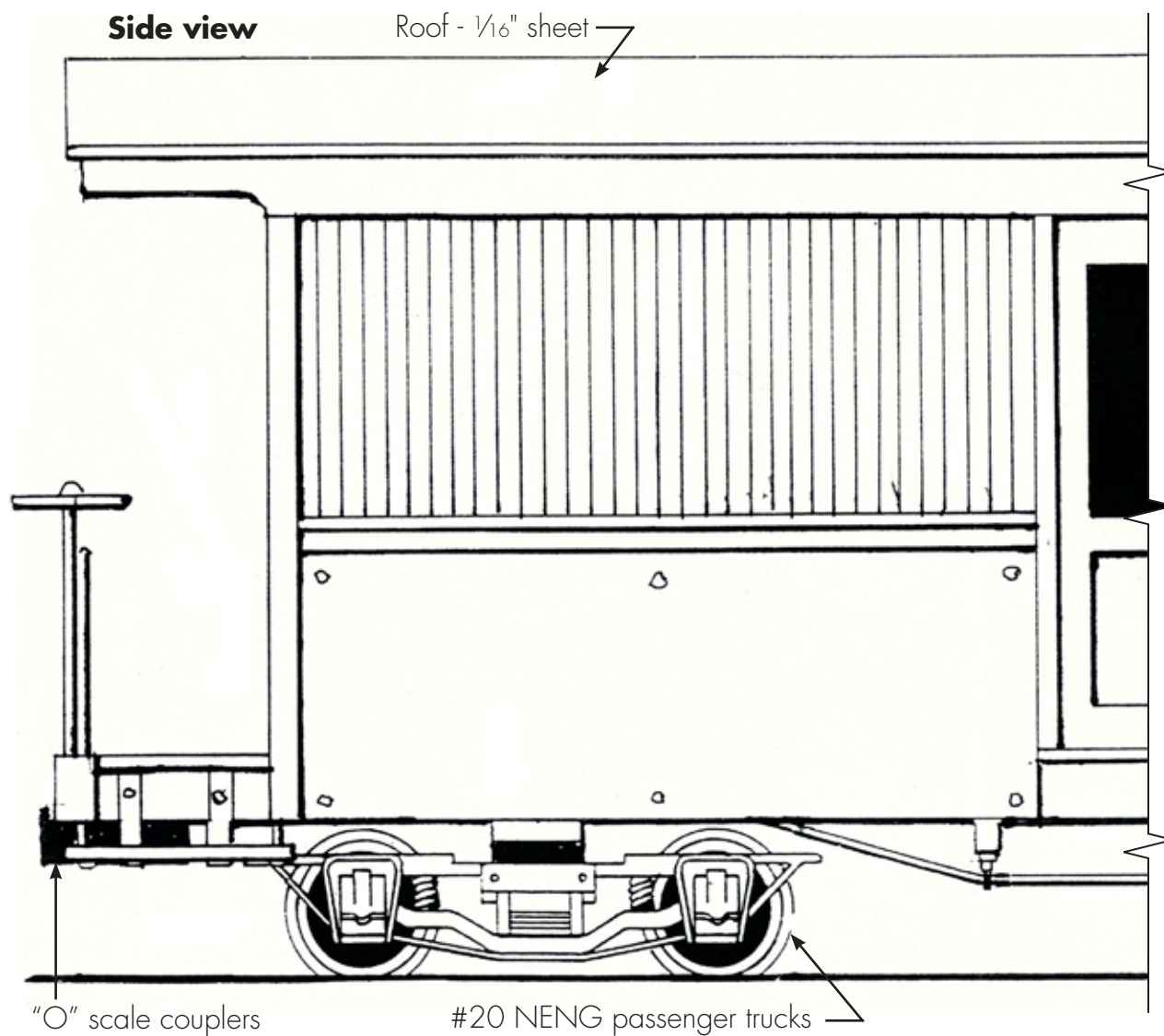
Top view



Baggage car interior (continued)

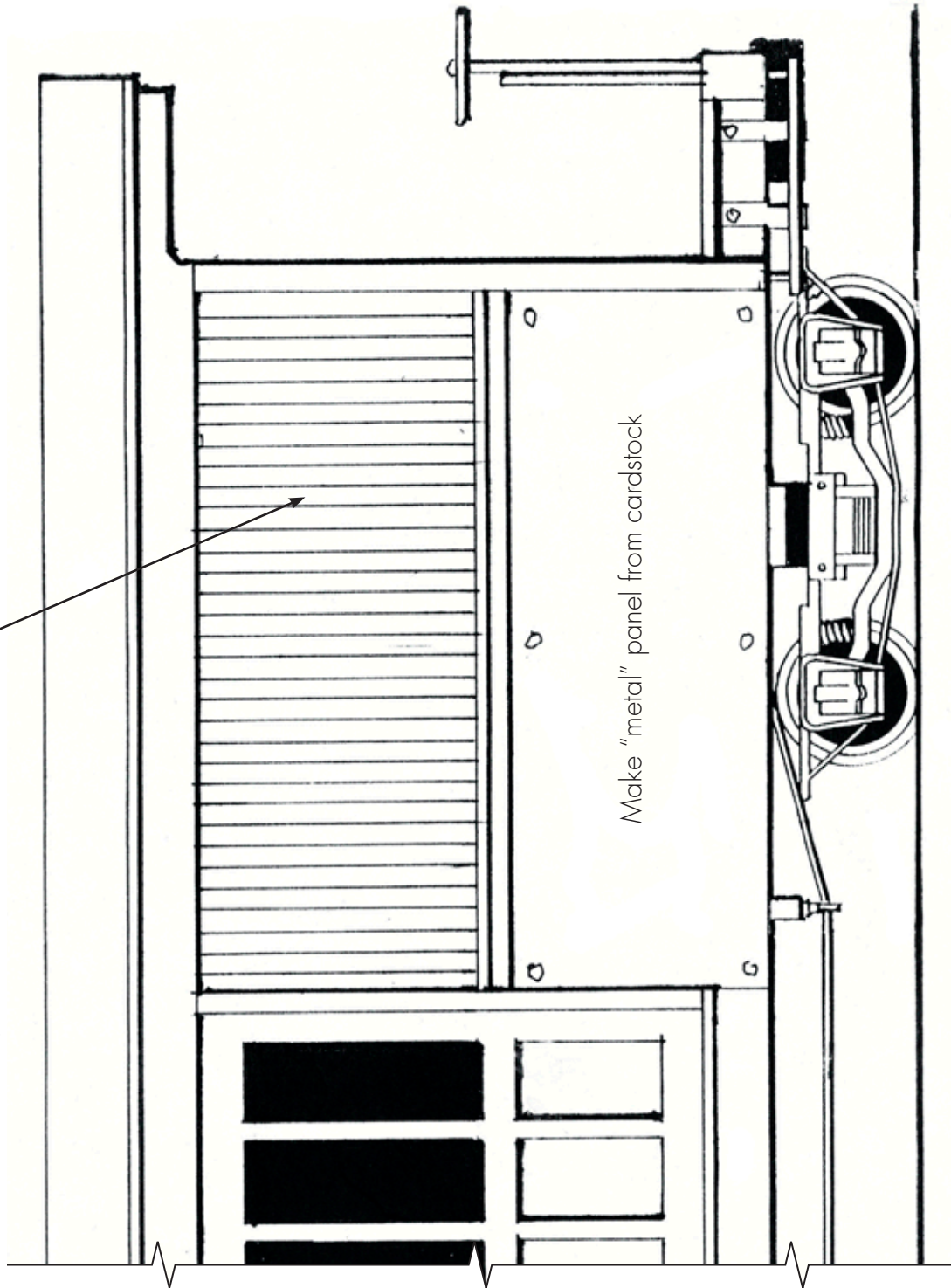
Top view

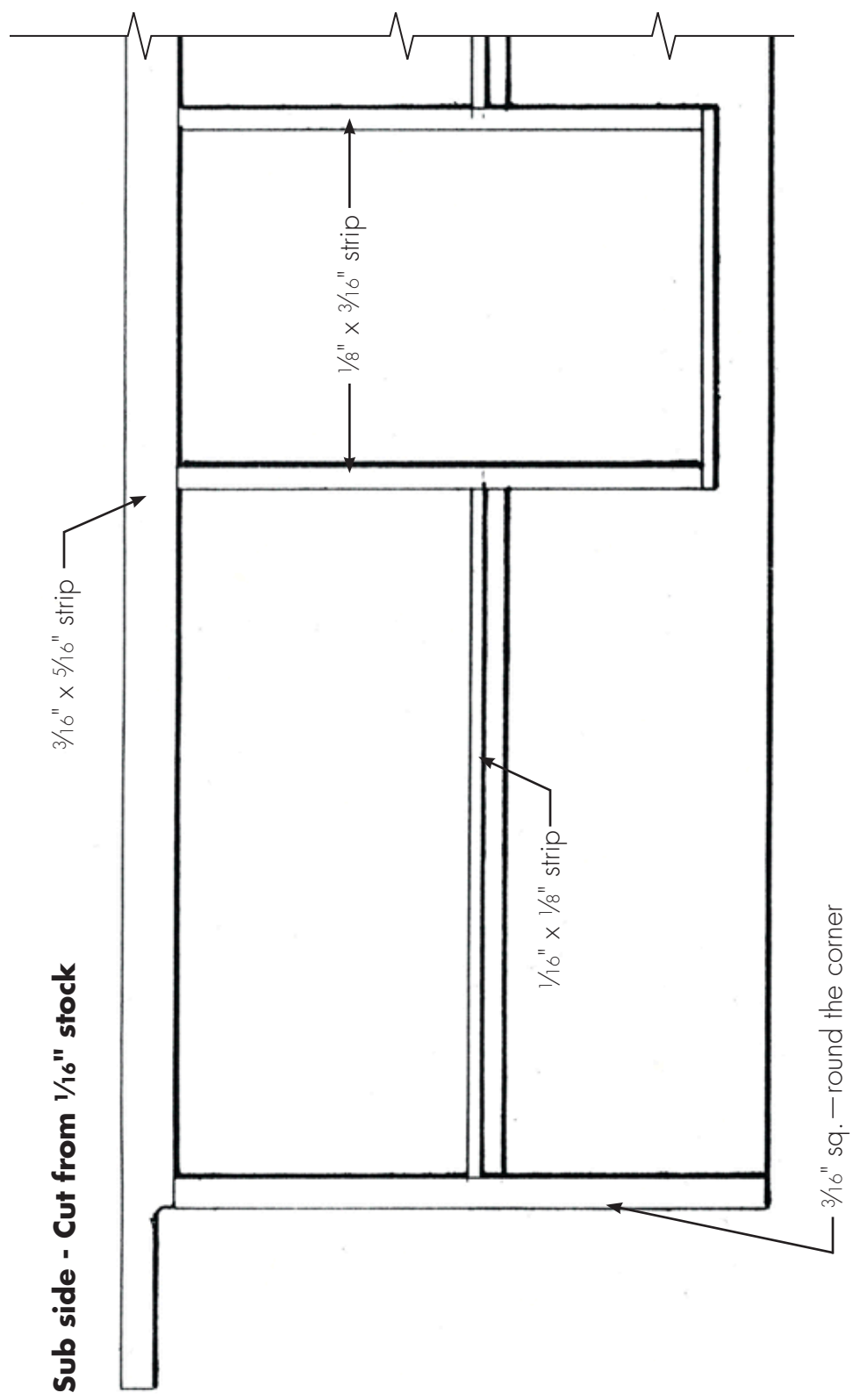




Side view continued

1/8" spaced, 1/16"-thick scribed wood





Sub side continued

