

The tender is basically a 0".080 styrene box reinforced with 1/4" square styrene strips with a three side tray with it's own floor secured to the top. Rivet detail was added in the usual way, this time using domestic sewing pins as rivets.

The tender sits over on the extension plate with the sides reaching down to the side frames and cab floor. The unit also fits into the recess at the rear of the cab created by the small overhang of the side walls beyond the rear cab wall.

Details on the tender include ladder and handrails from the Piko tender. These are not glued in place and can easily be prised away from the tender by gentle use of a chisel blade in a craft knife.

The water filling cap is from the top of one of my wife's old shampoo bottles and the two coal hopper tool boxes are fabricated from styrene as are the two cab water units. The valves for these two units came from the depths of my spare box! (I think they were part of the Prieser welders kit).

I searched high and low for gold lettering of the correct size to no avail. The G Scale station lettering however, one sprayed gold, does add a distinctive raised profile to the tender sides.

The cab coal retaining planks are real wood held in between styrene channels with a section of channel along the top of the coal hopper front.

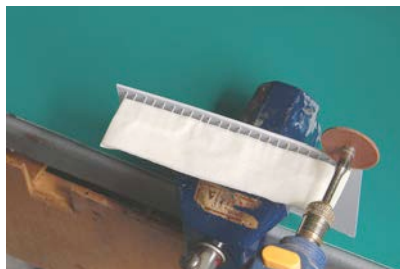
Real coal is secured in place with the traditional ballast securing mix of one part wood glue to three parts water.

Then it is simply a matter of securing the tender unit to the extension frame with the four long 12BA set screws – a 12BA socket spanner is an almost essential tool for securing the 12BA nuts below the loco.

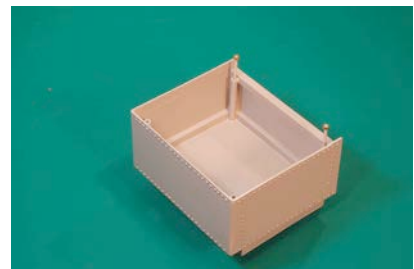
The two crew members were now added to the cab. The fireman is glued in place in the left hand corner whilst the engineer has double sided tape added to his seat base to permit his removal should the cab boiler unit need to be removed.



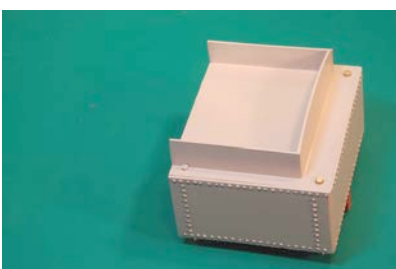
Adding rivet detail



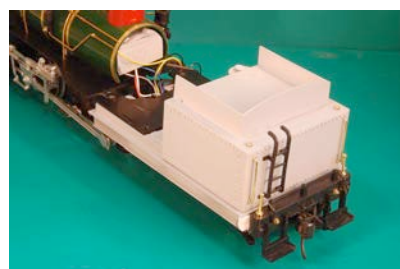
Removing excess rivet (pin) material



Under view of tender shell.



Basic tender unit



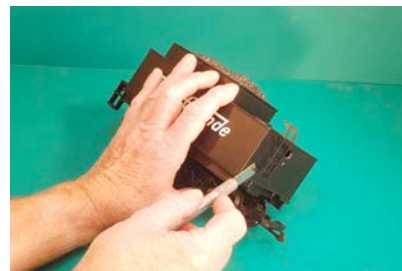
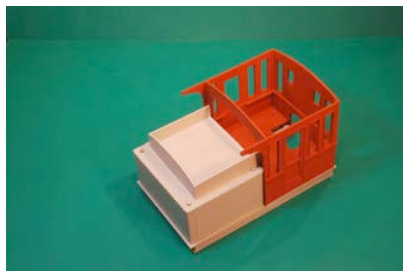
Rear beam and ladder from Piko loco



Brass studding rod used to make long bolts



Test fit of tender against cab



Removal of ladder from Piko Loco



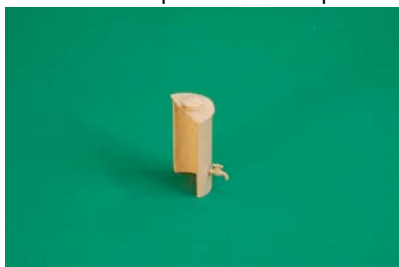
Water filler cap from bottle top



Component parts & finished tool box



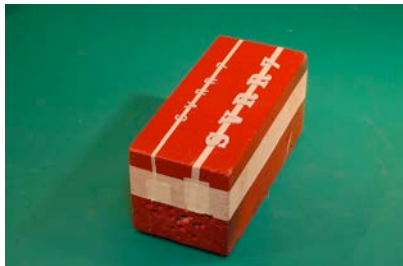
Inside view of cab water unit



Cab water unit – two required



Completed unit awaiting coal and lettering



Station lettering taped to block for spraying



Completed tender unit



Original and modified crew figures



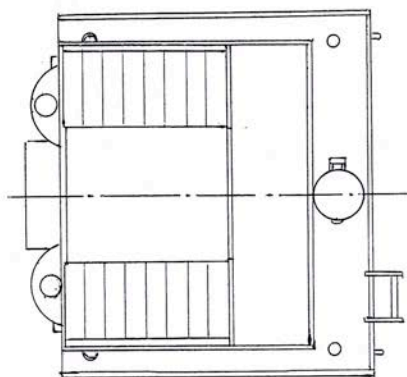
m

Basic dimensions only given to ensure snug fit inside cab and over base plate and permit personal modifications.

Tender fits inside rear 1/8" deep cab wall extension and over extension base plate.

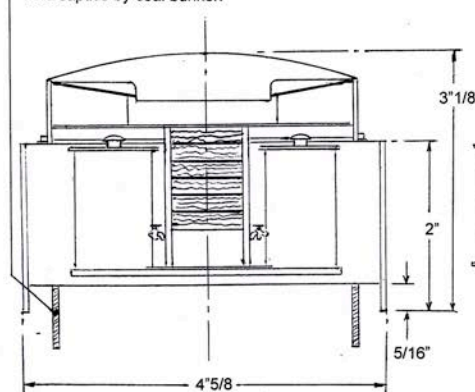
All tender walls constructed from 0.080 styrene with square 1/4" styrene strip internal bracing.

Upper coal bunker constructed as an open three sided tray and cemented to tender top.

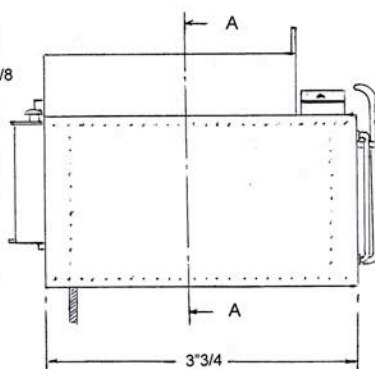


Plan

Two 2 1/2" long 8 BA set screws held captive by coal bunker.

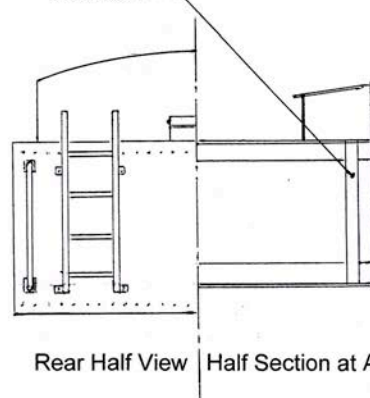


Front View



Side View

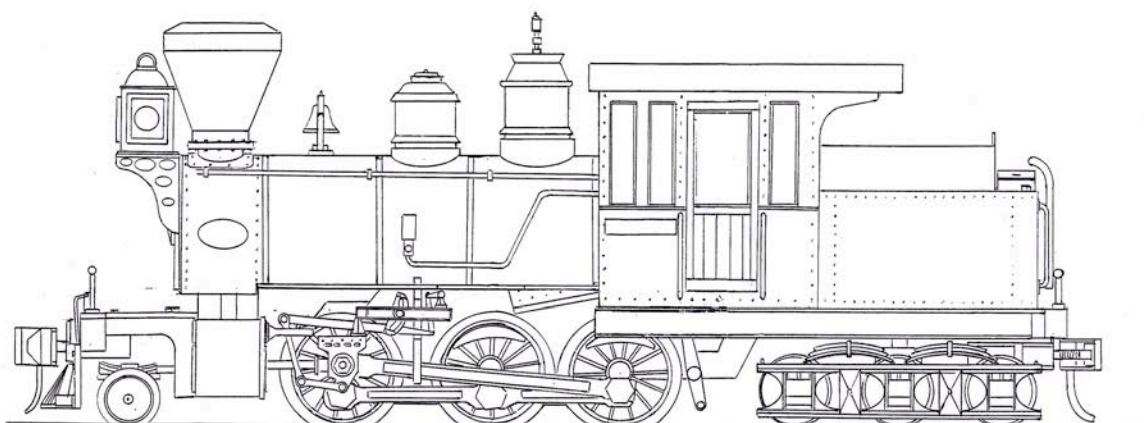
0.187" dia. styrene tube with 1/8" dia. brass tube liner acting as guide for long securing set screws.



Rear Half View Half Section at AA

Tender Details

n



Mason Bogie 2-6-6 Locomotive
 Kitbashed from a Piko 2-6-0 Mogul