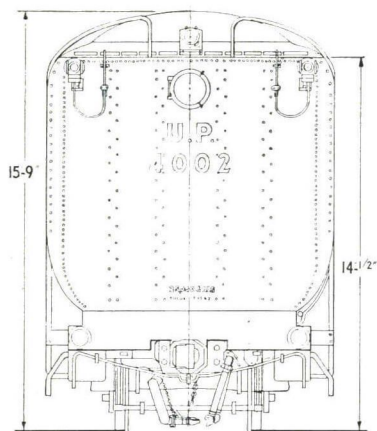
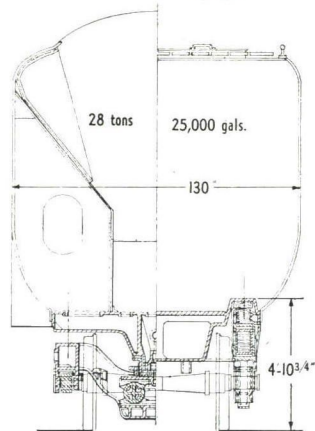


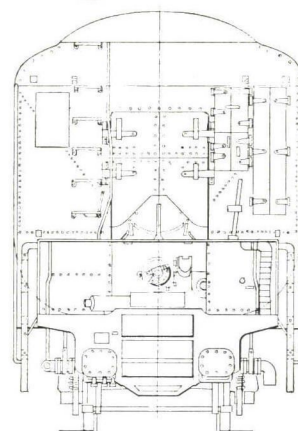
# UP "Big Boy"



REAR VIEW

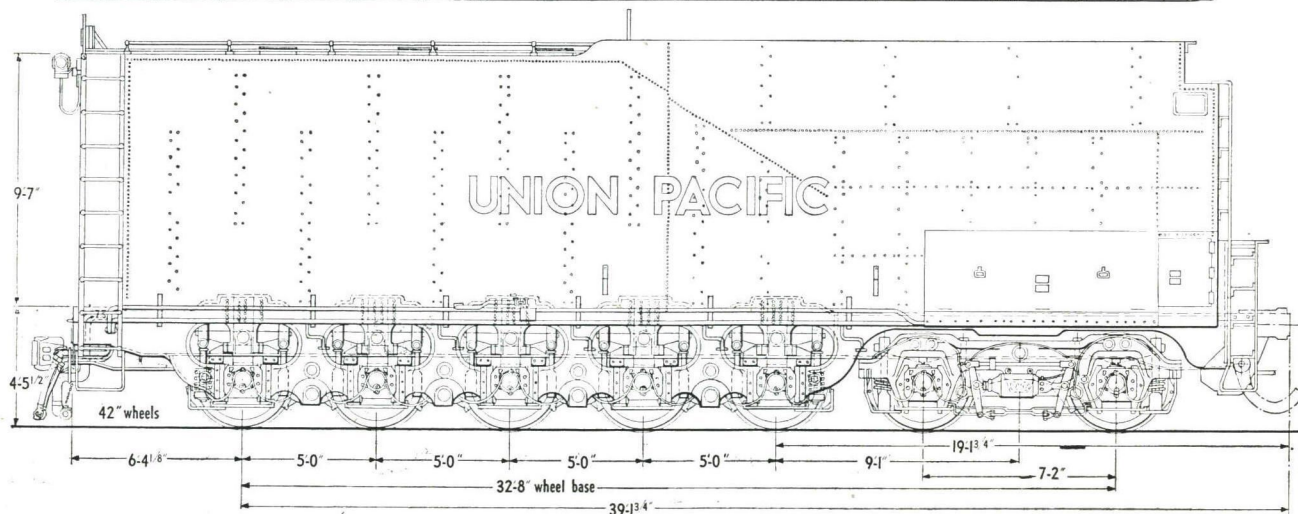
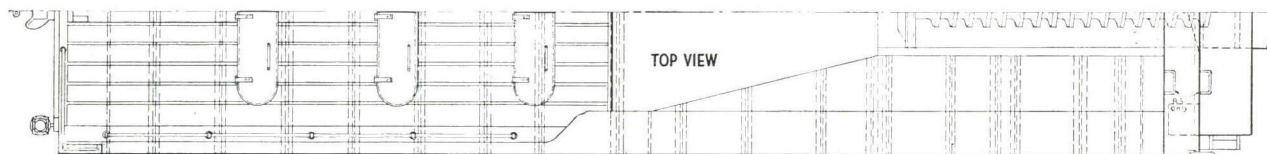


HALF SECTION  
THROUGH BOLSTER

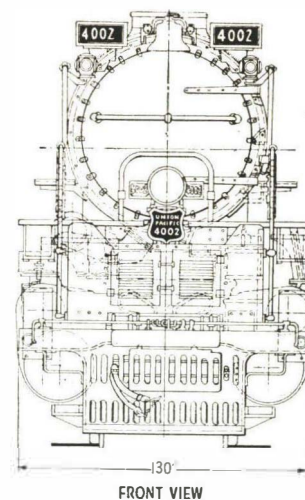
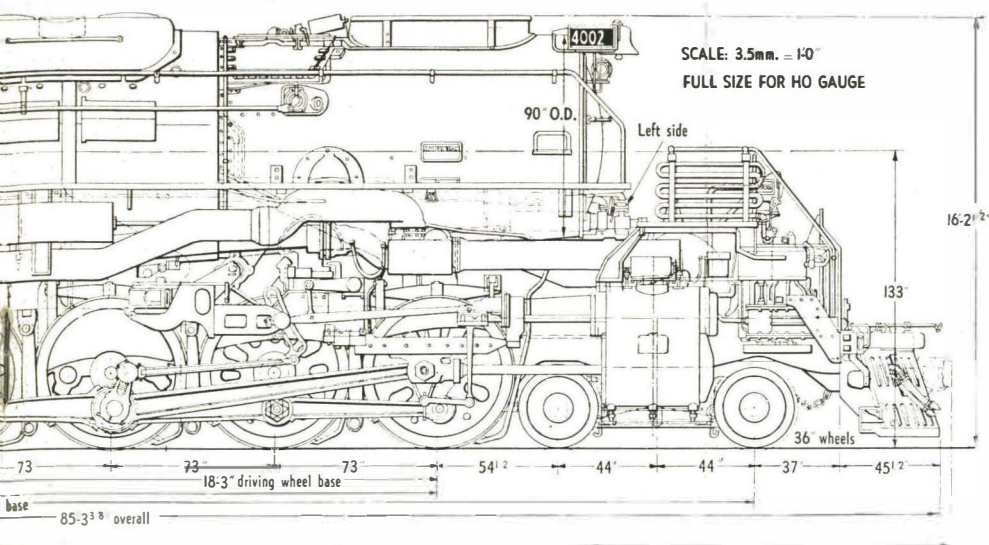


HALF SECTION  
THROUGH FIXED WHEEL

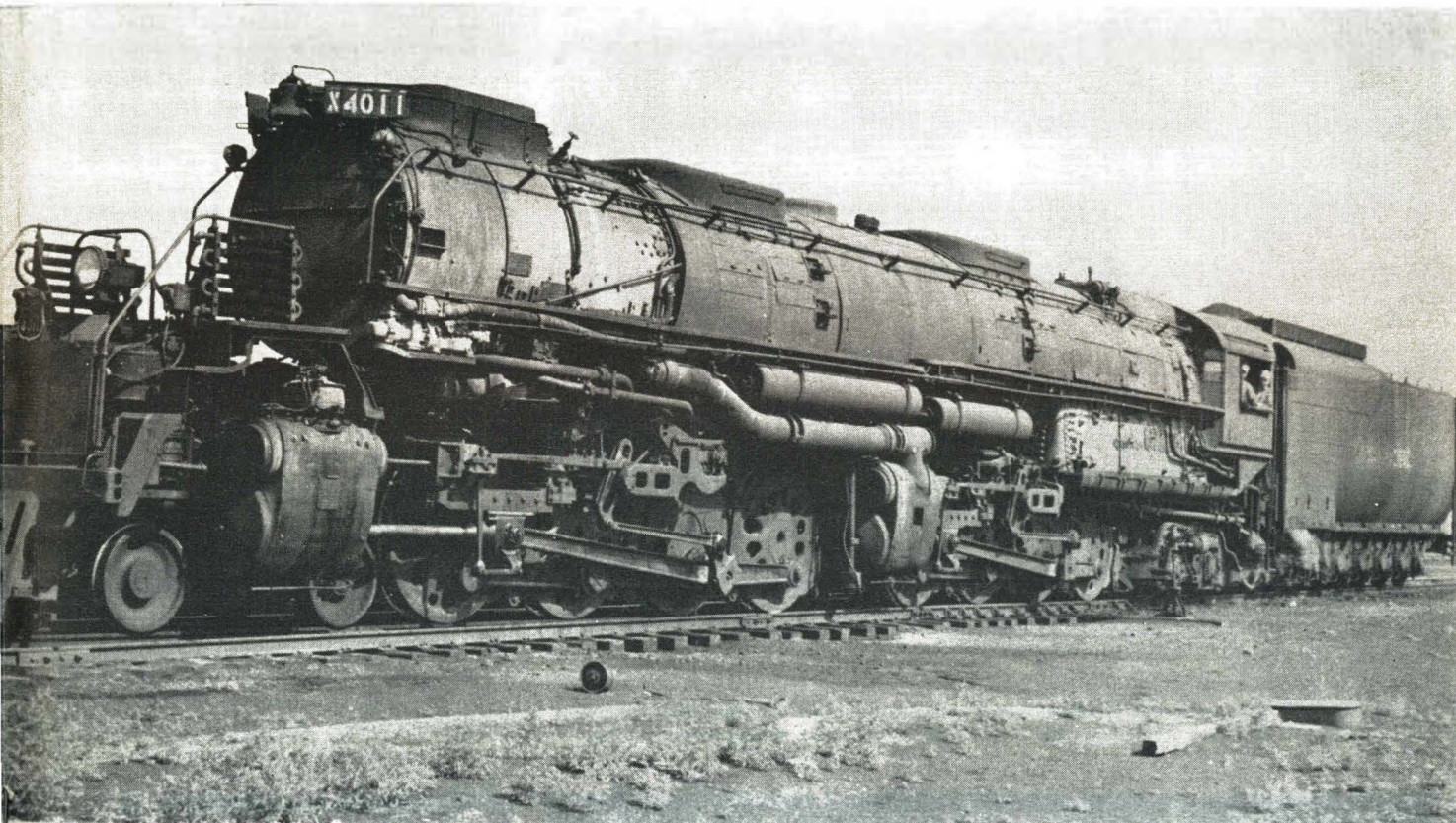
FRONT VIEW







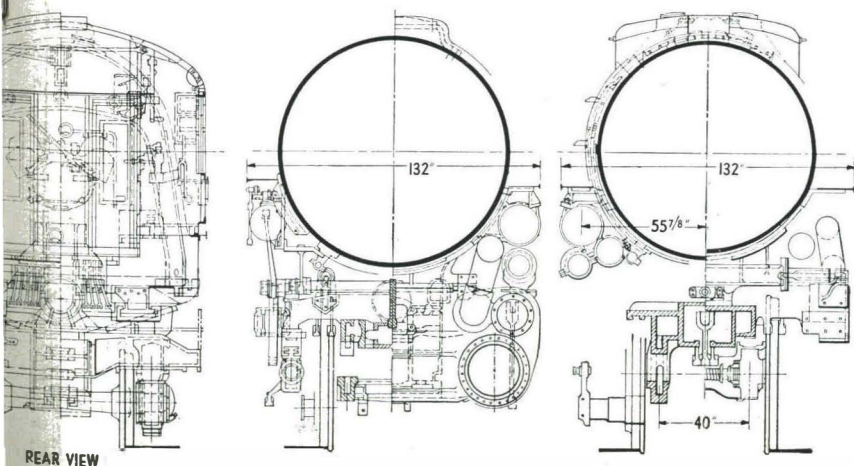
For non-commercial use, all MODEL RAILROADER plans may be photostated to different scales for any gauge.



R. H. Kennedy

Drawn especially for Model  
Railroader Magazine by  
**E. W. Bearman**  
from official railroad blueprints

Scale: 3.5 mm. = 1'-0"  
FULL SIZE FOR HO GAUGE



In 1941, the UP started taking delivery of the first of 25 single-expansion articulated locomotives of the 4-8-8-4 wheel arrangement. Aptly named "Big Boy," these 7000 h.p. 386-ton engines were the heaviest and biggest simple articulateds ever built. They were designed to haul maximum tonnage over the Wasatch mountains, where the ruling grade is 1.14 per cent, without a helper. Capable of operating anywhere on the UP, these engines can hit 80 m.p.h. and produce continuous maximum power at 70 m.p.h. HO gaugers can use many Bowser Challenger parts to build this locomotive.