

The Station at Gull Pond

by Edward A. Stinson
Wiscasset, Maine

This is a generic G-scale station. Yes, there was a real Gull Pond station on the old Sandy River & Rangeley Lakes. It was a small flag stop with a siding, which is all the information I can find. So, this is a station with features that were commonly found in other stations in rural New England. The interior is not shown in this plan set. It will be in the next set, along with seats, stove, baggage cart, lights, and station-master's office.

Cut, fit, and glue 1/8"-sq. sills under all of the windows. Using 1/6" x 1/4" stripwood, cut, fit, and glue the trim around all the windows. Using stripwood and 1/32"-thick plywood, make two doors. Glue these in place when done.

At this juncture, seal the building with clear, spray lacquer and prime both the interior and the exterior flat white (leave the roof exterior unpainted). When dry, paint the building with the colors of your choice. Use exterior-grade trim paint if you intend to leave the building out in the weather.

Now shingle the roof. Cut about thirty 1" x 15" strips of dark gray poster board. Stack these together and saw slits in them at 1" intervals. Saw about halfway through the stack. These will be your shingles. Glue the shingles in place with Titebond II, beginning at the bottom edge. When the roof is done and the glue has dried at least 24 hours, brush on one coat of thinned exterior varnish. Allow this to dry and repeat the process. This will saturate and seal the shingles, making them wholly weatherproof.

Now make up the smokestack, sign boards, and angle braces. Prefinish each before gluing it firmly in place. Cut out the clock faces and glue them in place. Seal them with thinned varnish as you did the roof. Now, overspray the whole structure with satin-finish varnish. Allow it to dry at least 24 hours.

Make up the individual window sashes. Begin by sealing and prepainting the stripwood and other sash materials. Cut out .020"- to .030"-thick clear plastic to the dimensions called out on the plan. Cut the sash materials to size and glue to one side of the clear plastic windows. Fit and glue the bottom sashes in place first. These will be flush with the interior wall. When the glue has dried, fit and glue the top sashes in place. These overlap the bottom sashes on the outside. When this has been done, the exterior of the station at Gull Pond is complete. ☼

CONSTRUCTION

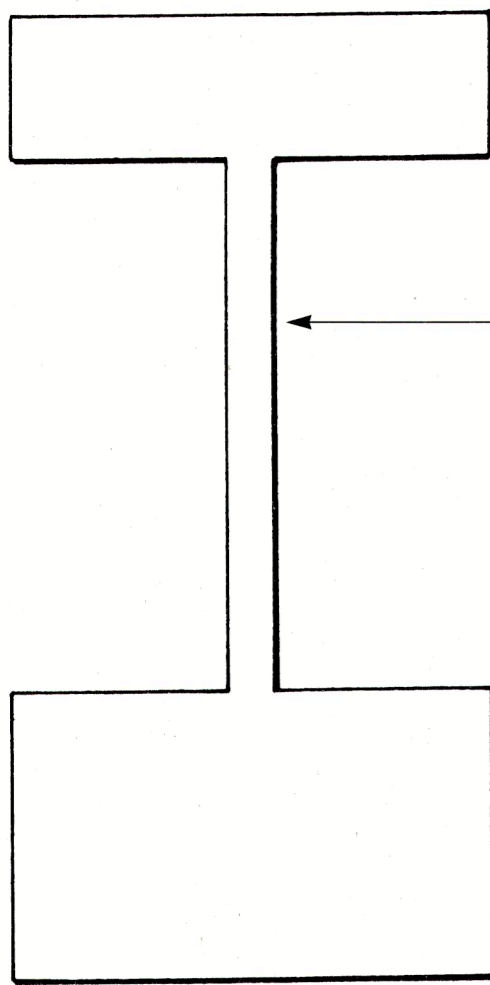
The model can be built from materials available in many hobby shops and building-supply centers. Stripwood can be cut on a table saw and plywood shapes can be cut on a scroll saw.

Begin construction by cutting out two ends and two sides from 1/8"-thick plywood. Make up two ends, a back side, and a front side, with windows cut as shown on the plan. From 3/4" stock, cut about two feet of 1/2" square material. With a table saw, cut grooves in this material as shown in the cross section. Cut four pieces, each 5" long. Make or purchase some 1/4" stock, at least 2 1/4" wide. Cut two pieces, each 1/4" x 2 1/4" x 13 3/4", to form the overhangs. Cut four pieces, each 1/4" x 1 1/4" x 6 5/8", with one end beveled 45°. Also, cut a piece of 1/4" sq. to a length of 13 3/4". Glue 1/32"-thick x 1/4"-spaced scribed wood to the outside surface of the sides and ends. Cut the window openings after the glue has set. Now assemble the station as shown on the plan.

Cut two pieces of 1/8"-thick plywood, 7" x 14". Also cut two pieces of 3/16"-sq. x 6 1/4"-long stripwood. These will make the roof and should be glued in place now. There will be a gap in the 3/16"-sq. stock at the top center of the roof. This is for the clock tower, which should be made next. When the tower is done, glue it in place. Make the bay window from 1/8" plywood and 1/4"-sq. stock. Sheath the plywood with scribed wood in the same way as the main body of the station. Once the glue has set, glue the bay to the front of the station and the overhang. Now glue 1/8" x 1/4" stripwood under the eaves.

This sheet is a supplement to the April 1997 issue of *Garden Railways* magazine. While supplies last, extra copies of these drawings can be had by sending \$1.50 per set (\$2.00, foreign) to: Sidestreet Bannerworks, PO Box 61461, Denver CO 80206 USA. For those not possessed of the energy or equipment, a complete kit of parts is available for \$59.95 + \$6 s&h from Northeast Narrow Gauge, PO Box 191, Wiscasset ME 04578.

© 1997 by *Garden Railways* magazine and Northeast Narrow Gauge. These drawings may be photocopied by individual modelers for their own personal use. Copying for any commercial use or for distribution is prohibited without written consent from the publisher.

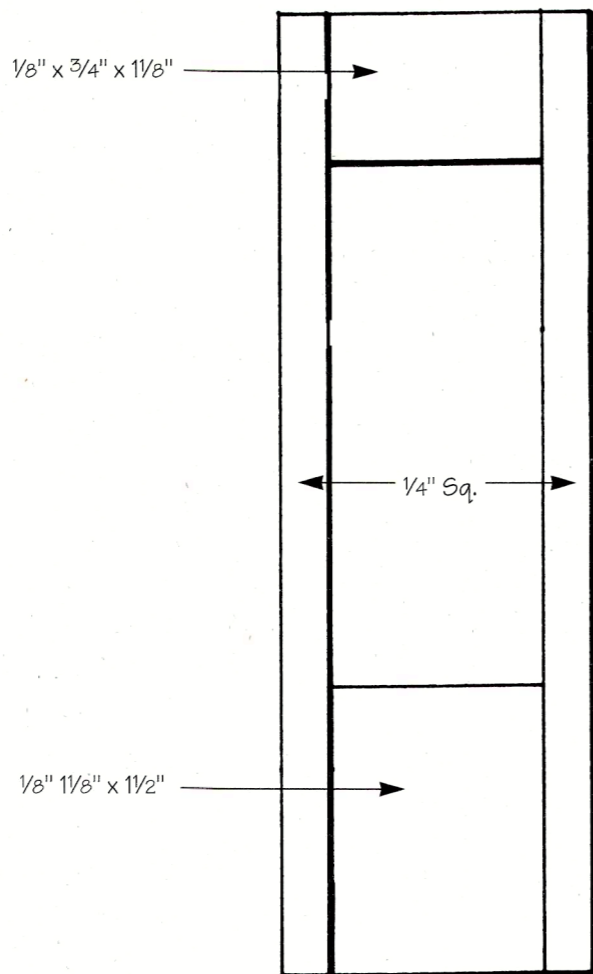


BAY WINDOW FRONT

Cut from 1/8" x 2 1/2" x 5"

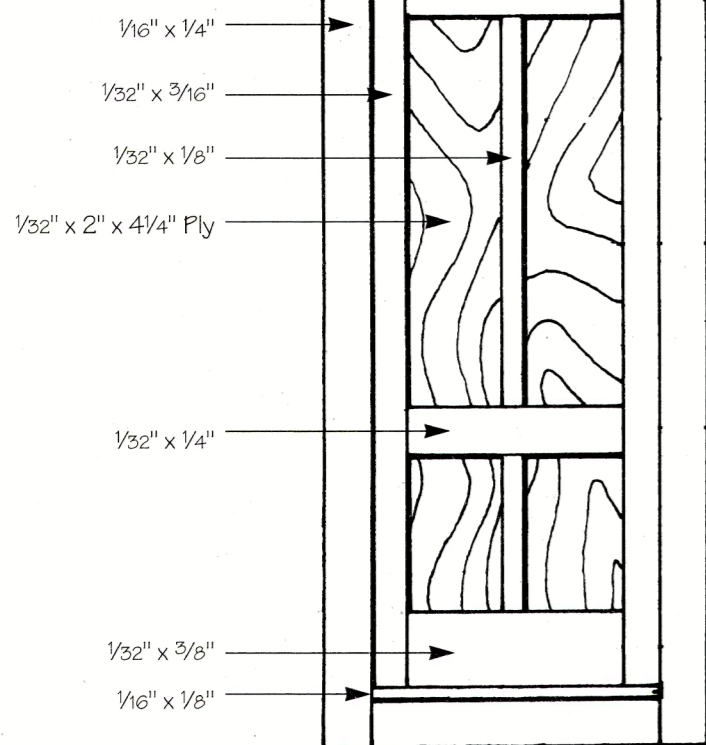
BAY WINDOW SIDE

Make 2



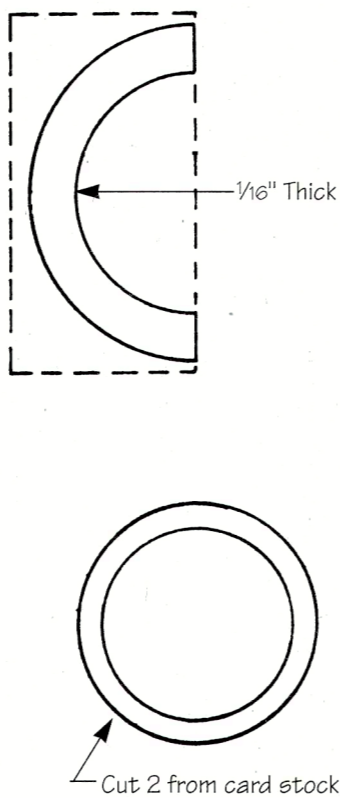
DOOR

Make 2



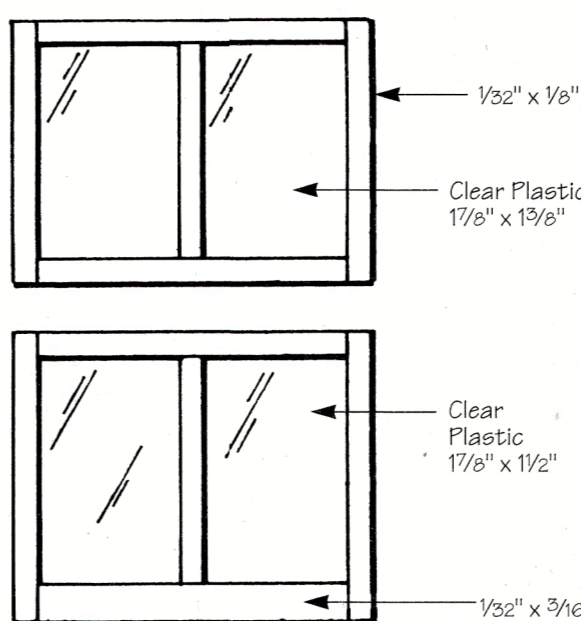
ROUND WINDOW TRIM

Cut 4 from 1/16" x 1" x 2"



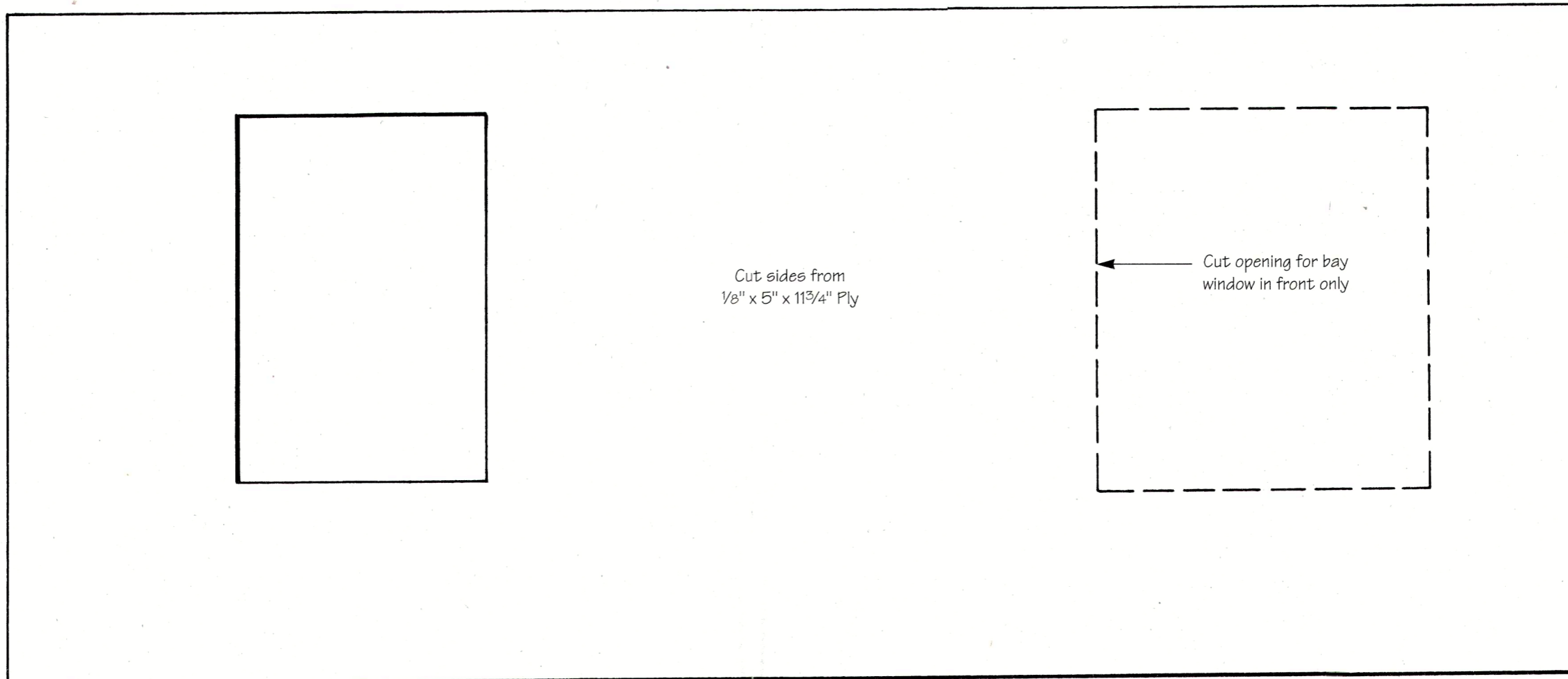
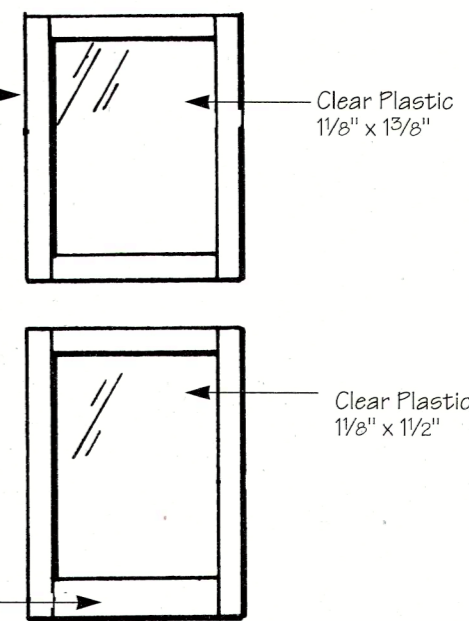
MAIN WINDOW SASH

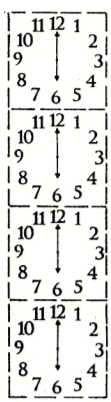
Make 4 of each



BAY WINDOW SASH

Make 4 of each





CLOCK FACE (50%)

Cut out and glue to Tower after painting seal with clear varnish

GULL POND

GULL POND

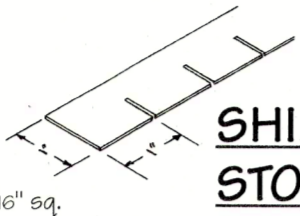
SIGN BOARD (50%)

Cut out and glue to painted board (1/16" x 7/8" x 3 3/4") Seal with clear varnish

SHINGLE STOCK (50%)

Cut from dark gray card stock

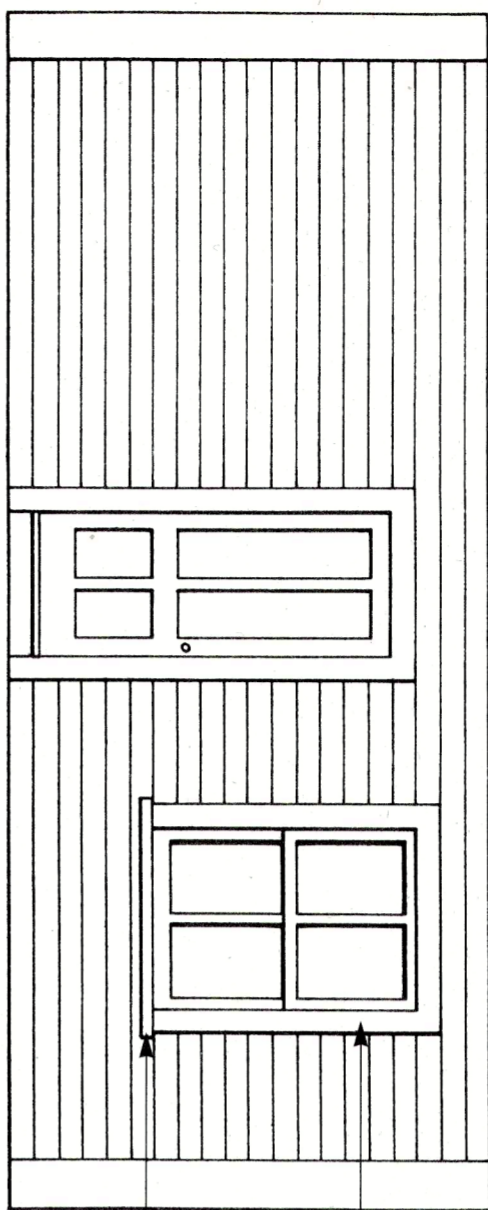
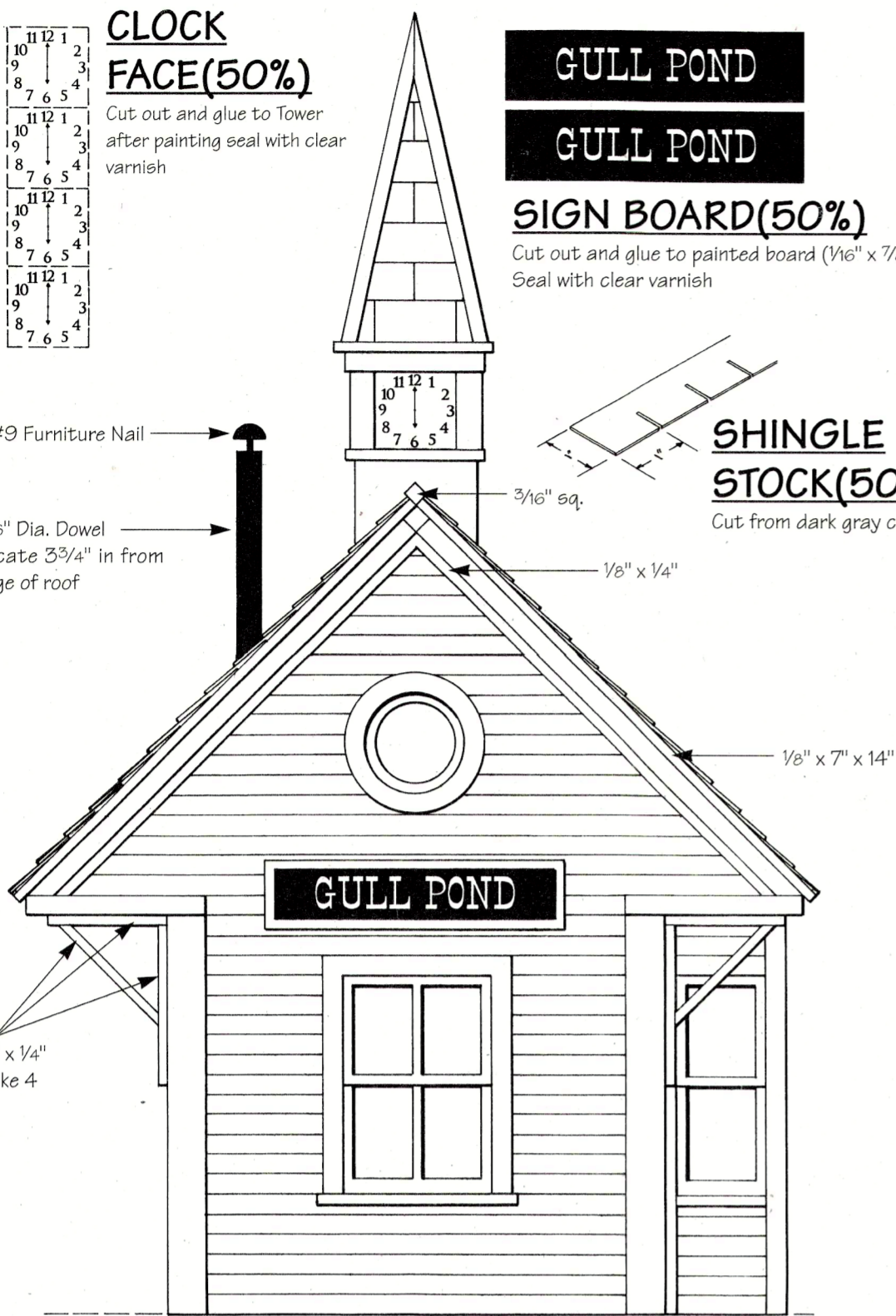
#9 Furniture Nail
5/16" Dia. Dowel
Locate 3 3/4" in from edge of roof



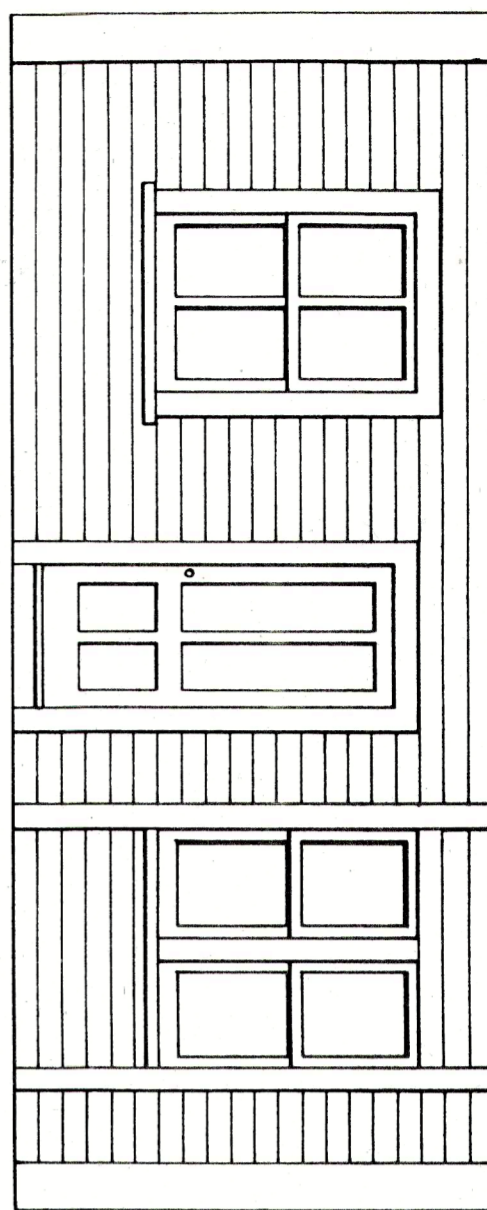
3/16" sq.
1/8" x 1/4"

1/8" x 7" x 14"

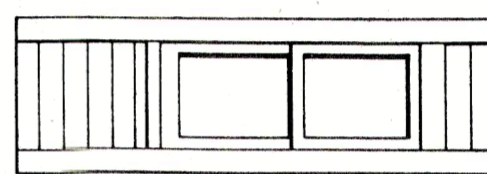
1/8" x 1/4"
Make 4



REAR SIDE (50%)



FRONT SIDE (50%)

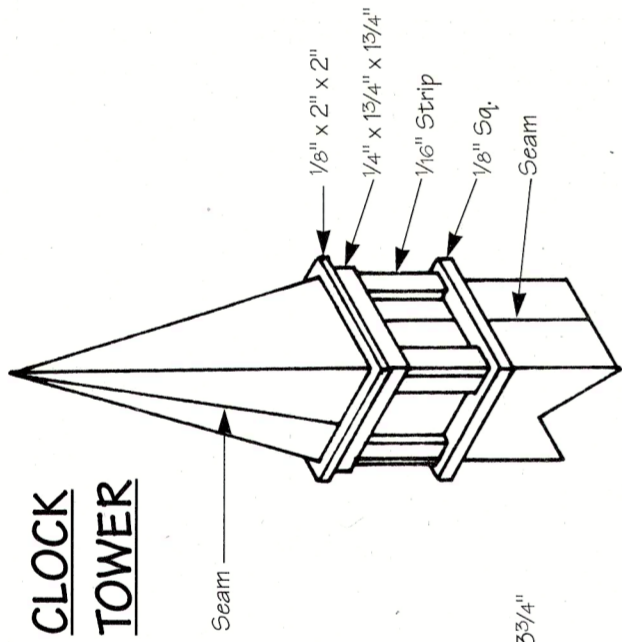


SIDE VIEW OF BAY

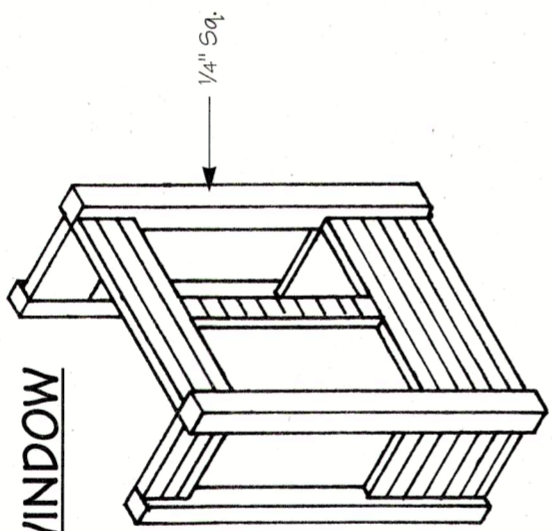
1/8" Sq. Sill

1/16" x 1/2" Trim

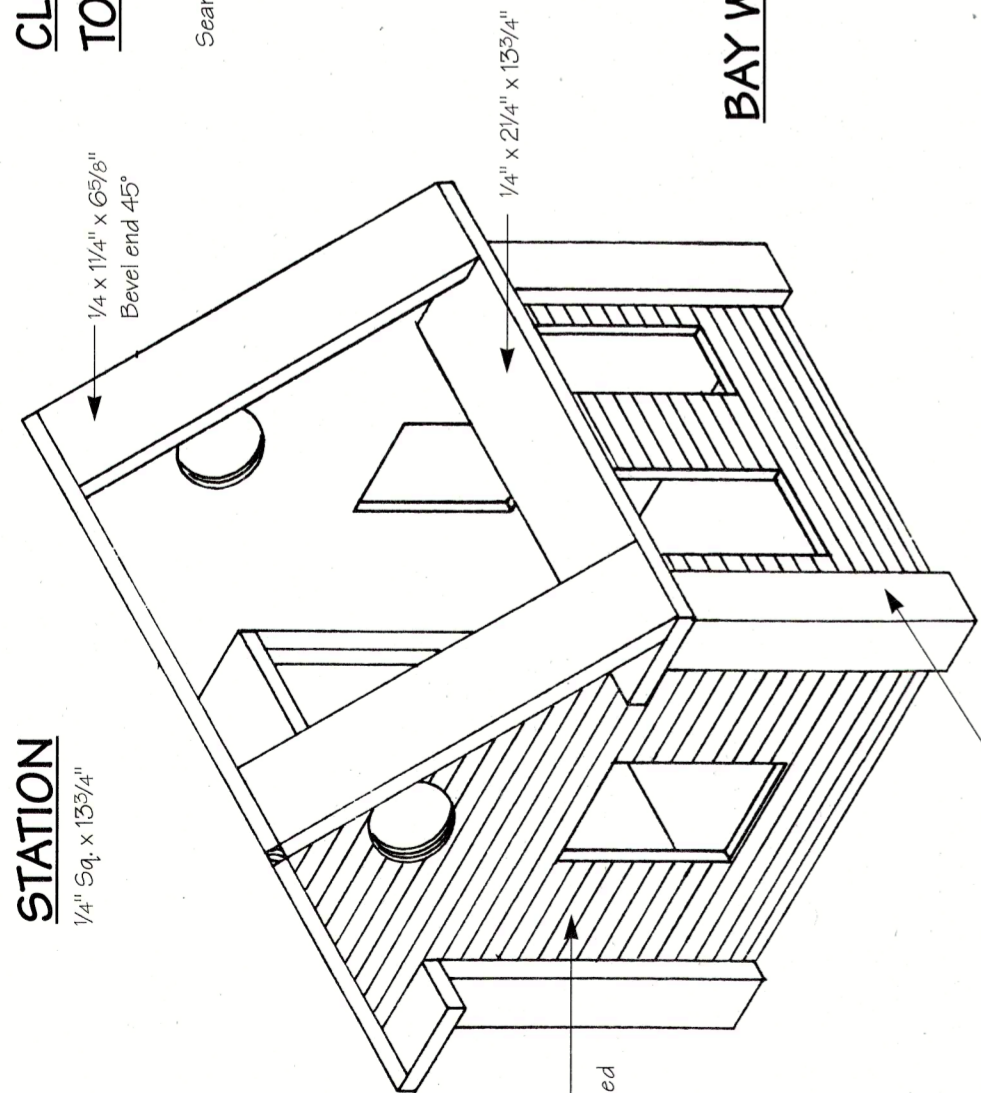
CLOCK TOWER



BAY WINDOW



STATION



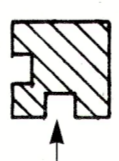
1/4 x 1 1/4" x 6 5/8"

Bevel end 45°

1/4" x 2 1/4" x 13 3/4"

1/32" thick
1/4" spaced scribed
Wood

1/2" Sq. x 5"

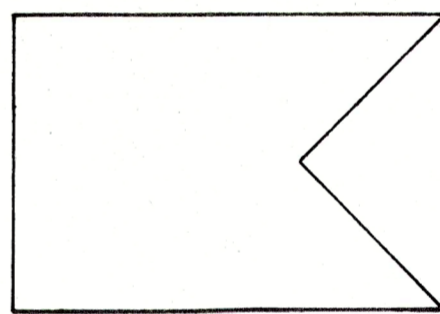


Cross Section

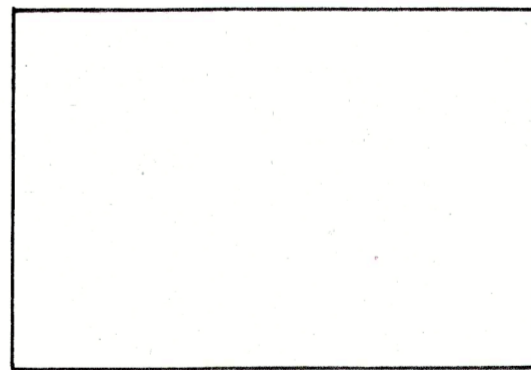
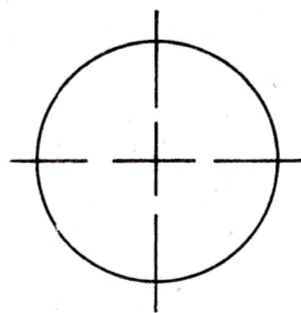
5/32" Wide Slot

TOWER BASE

Cut 2 from 3/4" x 1 1/2" x 2 1/2"



Cut ends from 1/8" x 9/16" x 10"



STEEPLE

Cut 2 from 3/4" x 1 1/2" x 4"

