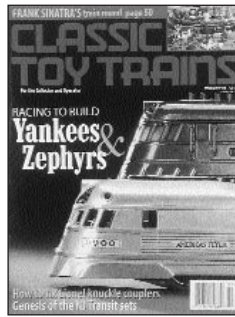


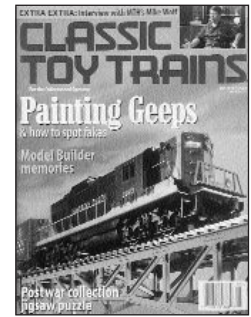
January



February



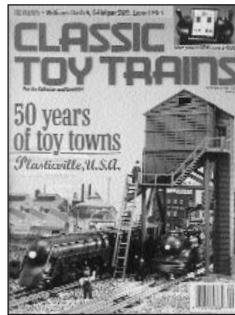
March



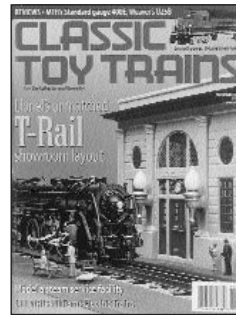
May



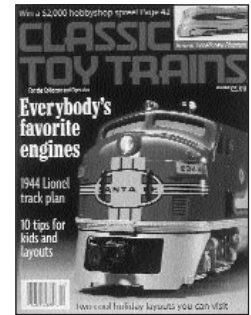
July



September



November



December

BACK ISSUES: Limited quantities of February, March, May, July, and September 1998 issues are available at \$4.50 each; November and December issues are available at \$4.95 each. Also available at \$4.50 each are Fall 1988; Summer 1989; February, April, June, August, October, and December 1990; April, June, August, October, and December 1991; August, October, and December 1992; January, March, May, July, and September 1993; January, March, May, July, September, and November 1994; January, May, July, September, November, and December 1995; January, February, May, July, September, and December 1996; February, March, May, July, September, and December 1997; November 1997 is available at \$5.50 each.

Send all orders to Kalmbach Publishing Co., Dept. CK094, 21027 Crossroads Circle, P. O. Box 986, Waukesha, WI 53187-0986, or call toll-free 800-533-6644 (outside the United States and Canada, call 414-796-8776), or visit CTT's web site at www.classictrains.com and click on "Books & Videos."

Orders must include payment for postage and handling: United States \$3 for fourth class or \$4.50 for UPS; Canada \$5; all other foreign \$10. Maryland, Michigan, Virginia, and Wisconsin residents add 5 percent sales tax to total. Canadian orders add 7 percent GST to total. Payable in U. S. funds. Prices and availability are always subject to change.

CLASSIC TOY TRAINS

INDEX

Volume 11
1998

©1999 Kalmbach Publishing Co., 21027 Crossroads Circle, Waukesha, WI 53187. No part of this volume may be reprinted without the specific permission of the publisher.

USING THE INDEX: Most feature material has been indexed six or more times: by the title under which it was published; under the author's last name; by subject, usually falling under one or more of the CTT subject categories; by the era during which the train(s) described was made; by the gauge or scale of that train(s); and by the manufacturer of that train(s).

An asterisk (*) preceding an entry indicates a feature by its published title.

CTT subject categories:

Advertising Gallery
Accessories
Cars
Collectors/operators
Concept and commentary
Construction and maintenance
Cover photos
Display
Electrical and control
Era
Gauge and scale
Historical

Identification and dating
Interviews
Layout descriptions
Lionel: The story
Locomotives
Manufacturer
Sets
Tinplate prototypes
Track plans

CTT departments:

Classic train sets
Collectible Classics
Conversation pieces
Display case
Editorials
News and Notes
Observation Platform
Point of View
Product News
Product reviews
Q's & A's

A

*A Bicentennial moment, July p118
*A home for your locomotive, Nov p60
Accessories
Build a better sound activation button, Nov p104
Crane Mystery, The, Mar p82
From scrap to skyscraper, July p70
Gabe the Lamplighter, July p90
Great Crates, Jan p116
Home for your locomotives, A, Nov p60
Just one word: Plasticville, Jul p58
Lionel's five prewar diners, Nov p90
Lionel or Madison, Nov p91
Picket fences for Christmas, Sept p62
Rotary controllers, Feb p102
Scratchbuild an oil depot, Mar p100
Servicing Lionel's operating freight station, Dec p70
This time . . . build 'em right, Nov p66
Adamson, George
Lionel's loss: collectors' gain, Mar p94
Advertising Gallery
Fathers and sons, Nov p103
Grandpa and the Turbine, Jan p111
Greatest thrill on wheels, The, May p101
Just like real!, Mar p107
Perfect family, The, July p93
Priming the pump, Sept p101
Sunday punch, The, Dec p113
Truly golden anniversary, A, Feb p97
Ahearn, Jack
This time . . . build 'em right, Nov p66
Albert, Jon
Illinois Central in a garage, Mar p90
Algozzini, Joe
My top ten O-27 streamliners, Jan p56
Ambrose, Paul
1960 Father & Son set, Sept p86
*America's favorite train, Dec p78

B

*B&O Sentinel cars, Mar p126
Benjamin, Jonathan Eric
Lionel's NJ Transit sets, Feb p58
Besouglouff, Neil (see also Editorials)
New York & Long Branch, The, Nov p94
*Bicentennial Moment, A, July p118
Brennan, Dennis
Puzzle picture collection, The, May p78
*Build a better sound activation button, Nov p104
Butterworth, George
Readin', writin', and railroadin', Jan p92
Byron, Carl
Flying Yankee, Feb p71

C

*Capturing an era, July p66
Carporelli, Len
Spotting copies, May p52
Carp, Roger
Prewar Europe survives in Lotus Land, Mar p60
Just one word: Plasticville, Jul p58
Leading a structured life, Sept p64
Nice guys do finish first, Mar p68
Unique in every sense, Feb p118

Cars

B&O Sentinel cars, Mar p126
Cleaning Lionel's twin-bin dump car, Nov p76
1960 Father & Son set, Sept p86
Joining the club, Feb p98
Lionel's loss: collectors' gain, Mar p94
My top ten O-27 streamliners, Jan p56
Zephyrs vs. Yankees, Feb p64
Casanova, Roger
Joining the club, Feb p98
Christianson, Dick
CTT visits 3rd Rail, Feb p84
Classic Railroads
Illinois Central, Mar p88
Lionel Lines, July p86
New York & Long Branch, The, Nov p94
Southern, Jan p100

Classic Track Plans

Milwaukee Road (O, Lionel), Sept p96
O-72 layout, Dec p92
Realistic Conrail track plan (O, Lionel), Feb p82
Union Pacific (O, Lionel), May p96

Classic train sets

Lionel's O gauge freight set no. 2163WS, Nov p70

*Cleaning Lionel's twin-bin dump car, Nov p76

Collectible Classics

Bicentennial moment, A, July p118
B&O Sentinel Cars, Mar p126

LGB's 2018D Mogul, Dec, p123
Lionel and the space race, Nov p134
Lionel's no. 221 Hudson, Sept p130
Lionel's 2037 steamer, Jan p134
Ubiquitous Mikado, The, May p124
Unique in every sense, Feb p118

Collectors/operators

Albert, Jon, Mar p90
Butler, Ira, July p66
Cinergy Corp., Dec p60
Easterly, Clyde, Jan p72
Fischer, Paul, Nov p78
Huntington Bank, Dec p94
Kimball, Ward, Mar p60
Klopp, Phil, Jan p80
Lambert, Bill and Rosam, May p78
Miller, Brian, July p80
Miller, John, July p62
Nassau Lionel Operating Engineers, Sep p74
Robinson, Richard, Feb p72
Seibert, Mike Dec p98
Sinatra, Frank, Feb p50
Werner, Richard, May p70
Yanosey, Robert, Mar p74
Yost, David, Sep p64
*Command control for those postwar classics, Jan p86

Concept and commentary (see also Point of View)

Tricky toy train terms, Dec p196

Construction and maintenance

Build a better sound activation button, Nov p104
Cleaning Lionel's twin-bin dump car, Nov p76
From scrap to skyscraper, July p70
Fun on the go, July p74
Getting a grip (couplers), Feb p90
Home for your locomotives, A, Nov p60
Kid-proof your layout, Dec p76
New life for a tired F3, Sept p92
Repairing Lionel 022 switches, May p90
Rotary controllers, Feb p102
Scratchbuild an oil depot, Mar p100
Servicing Lionel's operating freight station, Dec p70

Corrigan, Peter

Fun on the go, July p74

Cover photos

Dazzling F3s, May
Everyone's favorite engines, Dec
50 years of toy towns, Sept
Forbes, Jim, Jan, Jul
Lionel's unmatched T-Rail showroom layout, Nov
Locomotive showdown, Mar
Painting Geeps, May
Racing to build Yankees and Zephyrs, Feb
Saliture, Rebecca, Mar
Top 10 O-27 streamliners, Jan
Zuback, William, Feb, May, Sept, Nov, Dec
*Crane Mystery, The, Mar p82
*CTT visits MTH, May p58
*CTT visits 3rd Rail, Feb p84
*CTT visits Williams, Nov p96

D

*Dazzling F3s Lionel never made, July p58

Display and storage

Room full of memories, A, July p62

Display case

Becker, Chris, Jan p139
Brady, Steve, Feb p120
Cairns, Skip, Feb p120
Crutcher, Kyle, Feb p120
Gans, Chris, Jan p139
Hall, George, Jan p138
Kelley, Ken, Jan p138
Matejka, Mike, Feb p121
Palko, Stephen Jr., Feb p121
Pittsburgh's Carnegie Science Center layout, Jan p189
Spiro, Don, Jan p138

E

Editorials

Thumbs up for creativity, Dec p6
Long-lived king, Nov, p6
Looking to our future, Sept, p6
Toy-like or scale-like? July, p6
Dreams, not dollars, May, p6
Nonsense on the net, March, p6
Command icebreaker, Feb, p6
Red, yellow, and green, Jan, p6

Electrical and control

Build a better sound activation button, Nov p104
Command control for those postwar classics, Jan p86

Era: 1900-1919

Just like clockwork, Sept p82
Prewar Europe survives in Lotus Land, Mar p60

Era: 1920-1944

Crane Mystery, The, Mar p82
Finest Lionel showroom layout ever?, Nov p86
Grass Valley bridge line, Jan p72
Holiday team effort, A, Dec p60
Lionel's five prewar diners, Nov p90
Lionel's T-Rail showroom layout, Nov p78
Just like clockwork, Sept p82
Nice guys do finish first, Mar p68
O-72 layout, Dec p92
On the trail of the Blue Comet, Dec p98
Prewar Europe survives in Lotus Land, Mar p60
Prewar paradise, July p80
Repairing Lionel 022 switches, May p90
Tour the Chicago Flyer factory, Dec p72
226E dynasty, The, July p52
Zephyrs vs. Yankees, Feb p64

Era: 1945-1969

1960 Father & Son set, Sept p86
America's favorite train, Dec p78
Cleaning Lionel's twin-bin dump car, Nov p76
Crane Mystery, The, Mar p82
Fantastic Flyer, Feb p72
Fathers and sons, Nov p103
Flyer for '48, Nov p72
Flyer survivor, May p84
Friends in the trenches, Feb p107
Gabe the Lamplighter, July p90
Grandpa and the Turbine, Jan p111
Greatest thrill on wheels, The, May p101
Holiday team effort, A, Dec p60
Illinois Central in a garage, Mar p90
Jackie Gleason and the Lionel fiasco, Feb p81
Joining the club, Feb p98
Just like real!, Mar p107
Just one word: Plasticville, Jul p58
Leading a structured life, Sept p64
Lionel's O gauge freight set no. 2163WS, Nov p70
Lionel's mighty Turbine, Jan p66
Lionel's Model Builder, May p66
Lionel or Madison, Nov p91
My top ten O-27 streamliners, Jan p56
Nice guys do finish first, Mar p68
Perfect family, The, July p93
Picket fences for Christmas, Sept p62
Priming the pump, Sep p101
Puzzle picture collection, The, May p78
Readin', writin', and railroadin', Jan p92
Repairing Lionel 022 switches, May p90
Servicing Lionel's operating freight station, Dec p70
Showdown!, Mar p52
Sound-o-power!, Jan p106
Spotting copies, May p52
Sunday punch, The, Dec p113
Thanks for the memories, Dec p86
This time . . . build 'em right, Nov p66
Truly golden anniversary, A, Feb p97
226E dynasty, The, July p52
Updating an empire, Jan p80

Era: 1970-present

Capturing an era, July p66
Command control for those postwar classics, Jan p86
CTT visits MTH, May p58
CTT visits 3rd Rail, Feb p84
CTT visits Williams, Nov p96
German Christmas in America, A, Dec p94
Hi-railing through the East Mar p74
Illinois Central in a garage, Mar p90
Joining the club, Feb p98
Lionel's loss: collectors' gain, Mar p94
Lionel's NJ Transit sets, Feb p58
O gauge on a grand scale, Sept p74
Photographic artistry of Jeb Kriigel, Sep p70
Room full of memories, A, July p62
Showdown!, Mar p52
Sound-o-power!, Jan p106
Train stops at the top of the stairs, The, May p70
226E dynasty, The, July p52
Updating an empire, Jan p80

F

*Fantastic Flyer, Feb p72
*Fathers and sons, Nov p103
Faust, Jeff
Flyer survivor, May p84
Fischer, Paul
Lionel's T-Rail showroom layout, Nov p78
*Finest Lionel showroom layout ever?,

Nov p86

*Flyer survivor, May p84
*Frank Sinatra's toy trains, Feb p50
*Flyer for '48, Nov p72
*Flying Yankee, Feb p71
*From scrap to skyscraper, July p70
*Full circle after 50 years, Dec p91
*Fun on the go, July p74

G

*Gabe the Lamplighter, July p90

Gauge and scale: large

German Christmas in America, A, Dec p94
Lionel's loss: collectors' gain, Mar p94

Gauge and scale: O

1960 Father & Son set, Sept p86
America's favorite train, Dec p78
Build a better sound activation button, Nov p104
Capturing an era, July p66
Classic Railroads: Lionel Lines, July p86
Cleaning Lionel's twin-bin dump car, Nov p76
Command control for those postwar classics, Jan p86
Crane Mystery, The, Mar p82
CTT visits MTH, May p58
CTT visits 3rd Rail, Feb p84
CTT visits Williams, Nov p96
Dazzling F3s Lionel never made, July p58
Fathers and sons, Nov p103
Finest Lionel showroom layout ever?, Nov p86
Frank Sinatra's toy trains, Feb p50
Fun on the go, July p74
Grandpa and the Turbine, Jan p111
Greatest thrill on wheels, The, May p101
Grass Valley bridge line, Jan p72
Hi-railing through the East, Mar p74
Holiday team effort, A, Dec p60
Home for your locomotives, A, Nov p60
Illinois Central in a garage, Mar p90
Joining the club, Feb p98
Just like clockwork, Sept p82
Leading a structured life, Sept p64
Lionel's five prewar diners, Nov p90
Lionel's O gauge freight set no. 2163WS, Nov p70
Lionel's mighty Turbine, Jan p66
Lionel's NJ Transit sets, Feb p58
Lionel or Madison, Nov p91
Lionel's T-Rail showroom layout, Nov p78
Milwaukee Road, Sept p96
My top ten O-27 streamliners, Jan p56
New life for a tired F3, Sept p92
O gauge on a grand scale, Sept p74
O-72 layout, Dec p92
Perfect family, The, July p93
Prewar Europe survives in Lotus Land, Mar p60
Priming the pump, Sep p101
Puzzle picture collection, The, May p78
Readin', writin', and railroadin', Jan p92
Repairing Lionel 022 switches, May p90
Room full of memories, A, July p62
Servicing Lionel's operating freight station, Dec p70
Showdown!, Mar p52
Spotting copies, May p52
Sunday punch, The, Dec p113
Thanks for the memories, Dec p86
This time . . . build 'em right, Nov p66
Train stops at the top of the stairs, The, May p70
Truly golden anniversary, A, Feb p97
226E dynasty, The, July p52
Updating an empire, Jan p80
Zephyrs vs. Yankees, Feb p64
Gauge and scale: No. 1
Prewar Europe survives in Lotus Land, Mar p60
Gauge and scale: No. 2
Prewar Europe survives in Lotus Land, Mar p60
Gauge and scale: S
America's favorite train, Dec p78
Fantastic Flyer, Feb p72
Flyer for '48, Nov p72
Flyer survivor, May p84
Gabe the Lamplighter, July p90
Just like real!, Mar p107
Gauge and scale: standard/wide
CTT visits MTH, May p58
Grass Valley bridge line, Jan p72
On the trail of the Blue Comet, Dec p98
Prewar paradise, July p80
Tour the Chicago Flyer factory, Dec p72
*German Christmas in America, A, Dec p94
*Getting a grip, Feb p90
Grams, John

Finest Lionel showroom layout ever?, Nov p86
Lionel's O gauge freight set no. 2163WS, Nov p70
Lionel or Madison, Nov p91
Lionel's mighty Turbine, Jan p66
Tour the Chicago Flyer factory, Dec p72
226E dynasty, The, July p52
Zephyrs vs. Yankees, Feb p64
*Grass Valley bridge line, Jan p72
*Great Crates, Jan p116

H

Hall, George
Grass Valley bridge line, Jan p72
Train stops at the top of the stairs, The, May p70
Hamler, Ted
Flyer for '48, Nov p72
Historical
America's favorite train, Dec p78
Classic Railroads: Illinois Central, Mar p88
Classic Railroads: Lionel Lines, July p86
Classic Railroads: Southern, Jan p100
Classic Railroads: New York & Long Branch, Nov p94
Fathers and sons, Nov p103
Finest Lionel showroom layout ever?, Nov p86
Flying Yankee, Feb p71
Friends in the trenches, Feb p107
Grandpa and the Turbine, Jan p111
Greatest thrill on wheels, The, May p101
Holiday team effort, A, Dec p60
Ike liked trains, too, Dec p170
Illinois Central, Mar p88
Jackie Gleason and the Lionel fiasco, Feb p81
Just like real!, Mar p107
Just one word: Plasticville, Sept p58
Lionel's Model Builder, May p66
Lionel or Madison, Nov p91
New York showroom layout chronology, Nov p89
Nice guys do finish first, Mar p68
Perfect family, The, July p93
Picket fences for Christmas, Sept p62
Priming the pump, Sep p101
Sunday punch, The, Dec p113
Thanks for the memories, Dec p86
Tour the Chicago Flyer factory, Dec p72
Truly golden anniversary, A, Feb p97
*Holiday team effort, A, Dec p60
*Home for your locomotives, A, Nov p60

I

Identification and dating
1960 Father & Son set, Sept p86
Crane Mystery, The, Mar p82
Gabe the Lamplighter, July p90
Joining the club, Feb p98
Lionel's five prewar diners, Nov p90
Lionel's loss: collectors' gain, Mar p94
Lionel's mighty Turbine, Jan p66
Spotting copies, May p52
226E dynasty, The, July p52
Zephyrs vs. Yankees, Feb p64
*Illinois Central, Mar p88
*Illinois Central in a garage, Mar p90
Interviews
CIT visits MTH, May p58
CIT visits 3rd Rail, Feb p84
Irwin, Bruce
Full circle after 50 years, Dec p91

J

*Jackie Gleason and the Lionel fiasco, Feb p81
*Joining the club, Feb p98
*Just like clockwork, Sept p82
*Just one word: Plasticville, Jul p58

K

Keller, Bob (see also Product Reviews)
CIT visits MTH, May p58
CIT visits Williams, Nov p96
Showdown!, Mar p52
*Kid-proof your layout, Dec p76
Klopp, Phil
Command control for those postwar classics, Jan p86

L

Larson, Russ
LGB's 2018D Mogul, Dec, p123
Layout descriptions (By owner. T indicates track plan included, followed by scale or gauge designation and manufacturer)
Albert, Jon (T, O, Lionel) Mar p90
Butler, Ira (T, O, Lionel) July p66

Cinergy Corp (O, multiple) Dec p60
Easterly, Clyde (T, O, standard), Jan p72
Finest Lionel showroom layout ever?, Nov p86
Holiday team effort, A (O, multiple), Dec p60
Huntington Bank (G, LGB) Dec p94
Ligocki, Frank (T, S, Flyer) May p84
Lionel's T-Rail showroom layout (T, O, Lionel), Nov p78
Klopp, Phil (T, O, Lionel), Jan p80
Miller, Brian (Standard, Lionel), July p80
Nantucket Elementary (T, O, Lionel), Jan p92
Nassau Lionel Engineers (T, O, multiple), Sept p74
Robinson, Richard (S, Flyer), Feb p72
Sinatra, Frank (O, Lionel), Feb p50
Werner, Richard (O, Lionel) May p70
Yanosey, Robert (T, O, multiple), Mar p74
*Leading a structured life, Sep p64
Lesser, Joe
Home for your locomotives, A, Nov p60
Lewis, Eric.
Scratchbuild an oil depot, Mar p100
Like a visit to the past (Fischer layout), Nov p81
Lionel: The story
Nice guys do finish first, Mar p68
*Lionel Lines, July p86
*Lionel's 2037 steamer, Jan p134
*Lionel's five prewar diners, Nov p90
*Lionel's O gauge freight set no. 2163WS, Nov p70
*Lionel's loss: collectors' gain, Mar p94
*Lionel's mighty Turbine, Jan p66
*Lionel's Model Builder, May p66
*Lionel's NJ Transit sets, Feb p58
*Lionel's T-Rail showroom layout, Nov p78
Livezey, Dennis
Updating an empire, Jan p80

Locomotives, toy train
1960 Father & Son set, Sep p86
Bicentennial Moment, A, July p118
Lionel's 2037 steamer, Jan p134
Lionel's loss: collectors' gain, Mar p94
Lionel's mighty Turbine, Jan p66
New life for a tired F3, Sep p92
Showdown!, Mar p52
Sound-o-power!, Jan p106
Spotting copies, May p52
226E dynasty, The, July p52
Unique in every sense (Unique F3), Feb p118

M

Malcolm, Robert
Rotary controllers, Feb p102
Manufacturers: see also Product News, Product Reviews, News & Notes, Q&A
Manufacturer: American Flyer/Gilbert
America's favorite train, Dec p78
Fantastic Flyer, Feb p72
Flyer for '48, Nov p72
Flyer survivor, May p84
Friends in the trenches, Feb p107
Gabe the Lamplighter, July p90
Grass Valley bridge line, Jan p72
Just like real!, Mar p107
Tour the Chicago Flyer factory, Dec p72
Zephyrs vs. Yankees, Feb p64
Manufacturer: Bachmann Bros.
Just one word: Plasticville, Jul p58
Leading a structured life, Sept p64
Picket fences for Christmas, Sept p62
Manufacturer: Bassett-Lowke
Just like clockwork, Sept p82
Manufacturer: Bing
Prewar Europe survives in Lotus Land, Mar p60
Manufacturer: Hornby
Just like clockwork, Sept p82
Manufacturer: K-Line
Showdown!, Mar p52
Manufacturer: Lehmann/LGB
America's favorite train, Dec p78
German Christmas in America, A, Dec p94
Manufacturer: Lionel Corp.
1960 Father & Son set, Sept p86
America's favorite train, Dec p78
Cleaning Lionel's twin-bin dump car, Nov p76
Crane Mystery, The, Mar p82
Dazzling F3s Lionel never made, July p58
Fathers and sons, Nov p103
Finest Lionel showroom layout ever?, Nov p86
Frank Sinatra's toy trains, Feb p50
Friends in the trenches, Feb p107
Getting a grip, Feb p90

Grandpa and the Turbine, Jan p111
Greatest thrill on wheels, The, May p101
Grass Valley bridge line, Jan p72
Illinois Central in a garage, Mar p90
Joining the club, Feb p98
Lionel or Madison, Nov p91
Lionel's five prewar diners, Nov p90
Lionel's O gauge freight set no. 2163WS, Nov p70
Lionel's mighty Turbine, Jan p66
Lionel's Model Builder, May p66
Lionel's T-Rail showroom layout, Nov p78
Lionel's 2037 steamer, Jan p134
My top ten O-27 streamliners, Jan p56
New life for a tired F3, Sept p92
Nice guys do finish first, Mar p68
On the trail of the Blue Comet, Dec p98
Prewar paradise, July p80
Perfect family, The, July p93
Priming the pump, Sep p101
Puzzle picture collection, The, May p78
Readin', writin', and railroadin', Jan p92
Repairing Lionel 022 switches, May p90
Servicing Lionel's operating freight station, Dec p70
Showdown!, Mar p52
Spotting copies, May p52
Sunday punch, The, Dec p113
Thanks for the memories, Dec p86
This time . . . build 'em right, Nov p66
Truly golden anniversary, A, Feb p97
226E dynasty, The, July p52
Zephyrs vs. Yankees, Feb p64

Manufacturer: Märklin
Prewar Europe survives in Lotus Land, Mar p60

Manufacturer: Marx
America's favorite train, Dec p78
Fun on the go, July p74
Sound-o-power!, Jan p106

Manufacturer: Lionel MPC/Dimensions/LTI/Lionel LLC
America's favorite train, Dec p78
Bicentennial Moment, A, July p118
Capturing an era, July p66
Frank Sinatra's toy trains, Feb p50
Getting a grip, Feb p90
Illinois Central in a garage, Mar p90
Joining the club, Feb p98
Lionel's loss: collectors' gain, Mar p94
Lionel's NJ Transit sets, Feb p58
Room full of memories, A, July p62
Train stops at the top of the stairs, The, May p70
226E dynasty, The, July p52
Updating an empire, Jan p80

Manufacturer: MTH Electric Trains
America's favorite train, Dec p78
Room full of memories, A, July p62
Showdown!, Mar p52
Manufacturer: 3rd Rail
CIT visits 3rd Rail, Feb p84
Room full of memories, A, July p62

Manufacturer: Weaver
America's favorite train, Dec p78
Manufacturer: Western Coil
Zephyrs vs. Yankees, Feb p64
Manufacturer: Williams
CIT visits Williams, Nov p96
Showdown!, Mar p52
Matejka, Michael

Friends in the trenches, Feb p107
McGuirk, Martin
A realistic Conrail track plan, Feb p82
Milwaukee Road, Sept p96
Union Pacific, May p96
*Mere reflections, July p138
Merritt, Stan
Lionel's five prewar diners, Nov p90
Michels, Tom
Zephyrs vs. Yankees, Feb p64
Miller, Brian
Prewar paradise, July p80
Mill, Robert
Dazzling F3s Lionel never made, July p58
*O gauge on a grand scale, Sept p74
*Motor jargon, Mar p58
*My top ten O-27 streamliners, Jan p56

N

News & Notes photos: Locomotives, steam
2-6-4, O, Lionel no. 2037 Boy's Train locomotive, Feb p16
4-6-2, S, American Models, Jan p21
4-6-4, O, Tie-dyed HORDE Tour Vanderbilt, Jan p22
News and Notes photos: Locomotives, diesel
GE Dash 9, O, BNSF, MTH Electric Trains, Feb p15
GE Veranda turnbine, O, Union Pacific,

MTH Electric Trains, Sept p21
Alco FA, O, Union Pacific, Weaver, Mar p23
EMD DDA40X, O, Union Pacific, MTH Electric Trains, Sept p21
EMD SW9, O, Boston & Maine, Atlas O, May p22
EMD SW9, O, prototype, Atlas O, Sept p21
EMD SW9, S, Conrail and Boston & Maine, S-Helper Service, July p19
EMD GP7, O, Hot Rod, Lionel, Sept p21
EMD GP7/9, large scale, Conrail, Santa Fe, Pennsylvania RR; USA Trains, Sept p20
EMD GP38, O, Chessie System, K-Line, May p22

News and Notes photos: Locomotives, other
AEM7 (prototype photo), Atlas O, Dec p19
Mars Express, large scale, LGB, May p21
News and Notes photos: Miscellaneous items
Bergen County Model RR club display, Dec p21
Boxcars, O, HORDE Tour boxcars, Jan, p22
Burlington Zephyr prototype photos, Feb p18
Family friend, old family toy trains, Nov p21
Great Railway Adventures sets, Learning Curve, Dec p21
Lionel Express Cart, Ace Product management Group, Jan p21
Lionel ZW prototype, O, Nov p19
Pennsylvania RR paint samples, prototype photo, Mar p23
TTOS Cal-Stewart train meet, July pp19, 20
Tin Town structure kit, O, Marx, Dec p20
Track oddity, O gauge, Nov p21
U.S. Postal Service toy train stamp, Sept p19

News and Notes photos: Rolling Stock
Tank car, S, Bakers Chocolate, Downs Model RR Co., Mar p24
*Nice guys do finish first, Mar p68
*New life for a tired F3, Sept p92
*New York & Long Branch, The, Nov p94

O

*O gauge on a grand scale, Sept p74
*O-72 layout, Dec p92
Observation Platform
Childhood dreams, May p146
End of the Century, Jan p166
Fast Mail at midnight, The, Mar p154
Ike liked trains, too, Dec p170
Let's get ready to rumble!, Feb p146
Mere reflections, July p138
Unrealistic Plasticville, Sept p154
When toy trains were a wonder, Nov p162P
*On the trail of the Blue Comet, Dec p98

P

Pauley, Jim
Gabe the Lamplighter, July p90
*Perfect family, The, July p93
Peterson, Eric Sayer
Great Crates, Jan p116
*Picket fences for Christmas, Sept p62
*Photographic artistry of Jeb Kriigel, Sept p70
Plummer, Ray L.
Getting a grip, Feb p90
Repairing Lionel 022 switches, May p90
Servicing Lionel's operating freight station, Dec p70
Poindexter, S. Marshall
Frank Sinatra's toy trains, Feb p50
Point of View
A fresh approach, Feb p47
Beans and choo-choos, Sept p.54
Gift of a lifetime, The, Dec p52
Hi-rail's down side, July p48
More variety, please!, May p48
Nature of power, The, Mar p46
No whistling by the manger, Jan p48
Realism has arrived, Nov p54
*Prewar Europe survives in Lotus Land, Mar p60
*Prewar paradise, July p80
Product News: Structures
Bridges, girder, O, Marx, Mar p35
Feed mill kit, O, W.K. Walthers, Jan p30
Low relief kits, O, Downtown Deco, Mar p35
Low relief kit, O, Downtown Deco, Mar p35
Paper buildings, O and larger, Looks Like Paper Models, Sept p32
Product News: Locomotives, diesel
GE U25B, O, Chessie System, Weaver Models, Jan p30

GE Dash 9, O, Conrail, Williams Electric Trains, May p36
GE Dash 9, O, Norfolk Southern, Williams, July p32
EMD F unit, large scale, Santa Fe, LGB, Mar p34
EMD SD60, O, Soo Line, Lionel, May p38
EMD GP7, large scale, New York Central, U.S.A. Trains, May p33
EMD GP9, O, Erie Lackawanna and Florida East Coast, Williams, Dec p31
Product News: Locomotives, steam
0-4-0, O, New York Central, Marx, Nov p34
2-4-4, large scale, Princess, Hartland Locomotive Works, Dec p36
2-6-0, large scale, Union Pacific, Märklin, Nov p30
2-8-0, O, Baltimore & Ohio and Pennsylvania RR, 3rd Rail, Nov p30
4-6-2, O, Union Pacific 49er, Weaver, May p36
4-6-4, O, Milwaukee Road Hiawatha, MTH Electric Trains, Jan p31
4-8-2, O, Great Northern, Weaver, Nov p36
2-10-4, O, Chesapeake & Ohio, 3rd Rail, May p33
Product News: Locomotives, electric
No. 381, Standard gauge, MTH Electric Trains, May p33
Product News: Rolling stock, freight
Boxcar, O, Chesapeake & Ohio, Weaver custom car, Feb p29
Boxcar, O, Gulf Mobile & Ohio, Weaver custom car, Dec p30
Boxcar, O, Pennsylvania, Weaver custom car, Mar p34
Boxcar, O, Pennsylvania, Weaver custom car, July p32
Boxcar, large scale, New York Central, USA Trains, July p36
Boxcar, O, Milwaukee Road, Lionel custom car, Dec p34
Boxcar, O, Penn State, Weaver custom car, Dec p36
Bulkhead flat car, O, Alaska RR, Weaver custom car, July p36
Bulkhead flatcar, O, Burlington, Weaver custom car, Sept p36
Caboose, O, Santa Fe, Lionel custom car, Feb p32
Caboose, brass, O, Pennsylvania RR, Weaver, July p38
Caboose, S, Maine Central Christmas car, S-Helper Service, Dec p30
Cabooses, O, Pennsylvania RR, Brass Works, Nov p36
Central discharge hoppers, O, Rock Island and Delaware & Hudson, Weaver, Sept p39
Central discharge hoppers, O, Alaska RR, Weaver custom car, Nov p34
Cylindrical hopper, O, Erie-Lackawanna and Conrail, Atlas O, July p33
Dept. 56 tank car, O, Allied Model Trains, Sept p33
Evans Auto Loader cars, O, Tool Trains, Nov p38
Flatcar w/load, large scale, Conrail, USA Trains, Sept p33
Flatcar, custom made, O, R. Bishop Model Crafters, Jan p31
Holiday Car, large scale, U.S.A. Trains, Jan p34
Hoppers, O, B&O and Soo Line, Weaver, Feb p29
Hoppers, O, Burlington (red and gray), Weaver custom cars, Feb p34
Hopper, die-cast metal, O, B&O, K-Line, Feb p32
Hoppers, die-cast metal, O, Pennsylvania RR, Santa Fe, and Peabody, K-Line, Nov p31
Hoppers, O, Lehigh Valley and Penn. Power and Light, Weaver custom car, July p38
Intermodal flatcar, O, Adirondak Car & Foundry, Dec p38
Refrigerator car, O, Anchor Steam beer, USA Trains, large scale, Nov p38
RoadRailer, O, Bowser, Williams, July p32
Rolling stock, large scale, Bachmann, Dec p38
Rolling stock, O, Marx Trains, Jan p31
Rolling stock, O, Marx Trains, Dec p36
Rolling stock, O, U.S. Toy Train Co., Feb p28
Rolling stock, O, Jersey Central, Weaver and Peterson custom cars, Sept p33
Rolling stock, O, Norfolk Southern, Weaver

custom cars, Sept p36
Rolling Stock, O, Union Pacific and Fruit Growers Express, InterMountain Railways, Dec p31
Tank car, Penn Salt, O, United Model Distributors, Sept p38
Product News: Rolling stock, passenger
Amtrak Amfleet cars, O, MTH Electric Trains, Nov p34
Chicago Transit Authority set, O, Marx, Sept p32
Product News Photos: Miscellaneous
Bar stools, Lionel and American Flyer, Sept p32
Ballast, Ballast King, multiple gauges, Dec p34
Book, The Lionel Inspiration, Morning Sun Books, Mar p38
Catenary posts, S and O, South Shore Hobbies, Nov p40
Depot, O, MTH, July p33
Die-cast metal Lionel roadsigns, O, Ink Well, May p36
Die-cast metal Lionel locomotives, Hallmark, Nov p31
Die-cast metal vehicles, O, Die-Cast Direct, May p38
Die-cast metal school bus, O, Die-Cast Direct, Mar p38
Display case, Classic Case Co., multiple gauges, Sept p36
Gas station kit, O, W.K. Walthers Co., Dec p34
Intermodel Equipment, O, K-Line, Jan p35
Intermodal trailers, S, S-Helper Service, Mar p35
Steel coil loads, Western Hobbycraft, multiple scales, Dec p38
Ties, S and O, Great Plains High-Rail, July p36
Train set, O, Delaware & Hudson, Lionel, Nov p30
Train set, O, freight, Mobile Oil, Lionel, July p33
Train set, O, passenger, Rock Island, K-Line, July p32
Product Reviews: Operating Accessories
Test bench, O, Arduk engineering, Jan p11
Operating gas station, O, MTH Electric Trains, May p116
Wile E. Coyote Ambush Shack,), Lionel, Feb p116
Bascule bridge, O, Lionel, July p101
Product Reviews: Locomotives, steam
2-10-4, O, Pennsylvania, 3rd Rail, Jan p120
4-6-2, S, Southern Ry, American Models, July p100
4-6-2, O, Union Pacific, Weaver, July p106
4-6-4, O, Milwaukee Road, MTH Electric Trains, Nov p131
4-4-6-4, O, Pennsylvania, 3rd Rail, Nov p120
4-4-4, Standard gauge, New York Central, MTH Electric Trains, Nov p122
Product Reviews: Locomotives, diesel
Alco PA-1, O, Lionel, Sept p124
GE Dash 9, O, Williams, Sept p120
GE U25B, O, Union Pacific and Southern Pacific, Weaver, Nov p126
EMD F units, large scale, LGB, Mar p109
EMD GP9, large scale, Santa Fe, USA Trains, Nov p127
EMD GP38, O, BNSF, K-Line, Nov p116
EMD SW9, S, S-Helper service, Sept p116
Mighty Moe, large scale, USA Trains, No., p. 127
Pratts Hollow Phantom, O, Lionel, Dec, p. 126
Product Reviews: Locomotives, electric
GG-1, O, Pennsylvania, Williams, Feb, p. 110
Product Reviews: Rolling stock
Overton passenger cars, large scale, U.S.A. Trains, Feb p114
O gauge rolling stock, O, United Model Distributors, May p114
Plastic streamlined passenger set, O, Williams Electric Trains, Dec p136
Product Reviews: Structures
Wood building kit, O, American Model Builders, Feb p113
Walthers Fairfield Station kit, O, W.K. Walthers, Nov p121
Product Reviews: Miscellaneous items
Capacitors, O, Clarke and Carter, Dec p141
Chicago Transit Authority train set, O, Marx, Mar p110
O gauge track, O, Atlas O, Mar p111

O gauge O-54 switches, O, Atlas O, July p110
QS-2+ Upgrade Board, O, QSI Industries, May p108
Rail Tales playset, Lionel, May p118
Reverse unit, O, Dallee Electronics, Sept p126
Set, RailKing, O, MTH Electric Trains, Jan p126
Transformer, O, Dual Power O27, Model Rectifier Corp., Jan p121
Transformer, O, Z-4000, MTH Electric Trains, Sept p112
Trolley (PCC car), O, MTH, July p108
*Puzzle picture collection, The, May p78
Q
Q and A
American Flyer air whistle generator question for help, Feb p44
American Flyer air whistle generator wiring diagram, May p42
American Flyer trains and Lionel transformers, Ma, p42
Centering your track, Nov p.48
Cleaning your layout, Nov p.44
HO motors a good example? Nov p48
Hornby set, Dec p46
Ives no. 3252 history, Nov p44
Layout lift bridge, Dec p46
Lift bridge accessory controls, Sept p46
Lionel passenger car wiring, May p42
Lionel no. 68 motor replacement, Sept p46
Lionel no. 145 Gateman, Dec p46
Lionel no. 164 log loader wiring diagram, Jan p42
Lionel no. 165 Crane problem, Jan p44
Lionel no. 167 Controller, July p40
Lionel no. 225E wiring, Sept p48
Lionel no. 614 Switcher reverse unit, Jan p46
Lionel no. 1033 transformer, July p40
Lionel no. 1656 bell ringer trouble shooting, May p44
Lionel no. 2046 pickup rollers, Sept p44
Lionel no. 2343 troubleshooting, Feb p38
Lionel no. 3100 terminal trouble, Nov p44
Lionel no. 7608 factory error, Nov p44
Lionel no. 12834 Gantry Crane trouble, Nov p44
Lionel RW-1 transformer incompatibility problem, Dec p46
Lionel OTC lockon alternative, Nov p46
Lionel smoke pellets, Feb p40
Lionel transformer rated power, May p44
Lionel KW transformer voltage, Feb p38
Lionel ZW reversed controls, Sept p46
Lionel "Winner" trains, July p40
Locomotive lubrication, Mar p40
MTH El Capitan truck problem, Sept p46
MTH signal activator, July p40
Mystery 2600-series cars, Mar p42
Converting Lionel DC engine to Ac power, Jan p44
O-27 track, Jan p44
O-27 track, Sept p46
Pickup roller maintenance, Sept p44
Reader Tip: K-Line F7 modification, July p42
Reader Tip: Securing flatcar loads, Dec p44
Slider shoes & new custom switches, Feb p44
Toggle switches, Sept p46
Wiring Williams diesels for long nose first operation, Nov p46
R
*Readin', writin', and railroadin', Jan p92
*Realistic Conrail track plan, Feb p82
*Repairing Lionel 022 switches, May p90
Riddle, Peter H.
Kid-proof your layout, Dec p76
Robinson, Richard
Fantastic Flyer, Feb p72
Rollo, Tom
Crane Mystery, The, Mar p82
*Room full of memories, A, July p62
*Rotary controllers, Feb p102
S
Schenck, Hilbert
Just like clockwork, Sept p82
*Scratchbuild an oil depot, Mar p100
Seibert, Mike
On the trail of the Blue Comet, Dec p98
*Servicing Lionel's operating freight station, Dec p70
Setting the record straight
Sherman, Bob (painting)
Thanks for the memories, Dec p86
*Showdown!, Mar p52

Simonini, Donald
Picket fences for Christmas, Sept p62
*Sound-o-power!, Jan p106
*Spotting copies, May p52
Suek, Mark
B&O Sentinel cars, Mar p126
*Sunday punch, The, Dec p113
Swanson, Carl
From scrap to skyscraper, July p70
Lionel and the space race, Nov p134
T
*Thanks for the memories, Dec p86
Theis, Clarence
Sound-o-power!, Jan p106
This time . . . build 'em right, Nov p66
Thompson, Terry D. (see also Observation Platform)
America's favorite train, Dec p78
Bicentennial Moment, A, July p118
Classic Railroads: Illinois Central, Mar p88
Classic Railroads: Lionel Lines, July p86
Classic Railroads: Southern, Jan p100
Cleaning Lionel's twin-bin dump car, Nov p76
Fathers and sons, Nov p103
Frank Sinatra's toy trains, Feb p50
German Christmas in America, A, Dec p94
Grandpa and the Turbine, Jan p111
Greatest thrill on wheels, The, May p101
Hi-railling through the East, Mar p74
Holiday team effort, A, Dec p60
Just like real!, Mar p107
Like a visit to the past (Fischer layout), Nov p81
Lionel's no. 221 Hudson, Sept p130
Lionel's 2037 steamer, Jan p134
Lionel's Model Builder, May p66
Motor jargon, Mar p58
O-72 layout, Dec p92
Perfect family, The, July p93
Priming the pump, Sept p101
Photographic artistry of Jeb Kriegl, Sept p70
Room full of memories, A, July p62
Showdown!, Mar p52
Sunday punch, The, Dec p113
Thanks for the memories, Dec p86
Tricky toy train terms, Dec p196
Truly golden anniversary, A, Feb p97
Ubiquitous Mikado, The, May p124
What is T-Rail O, Nov p89
Tinplate prototypes
Flying Yankee, Feb p71
*Tour the Chicago Flyer factory, Dec p72
Track plans
Fantastic Flyer (S, Flyer) Feb p72
Flyer survivor (S, Flyer), May p84
Grass Valley bridge line (O, standard, multiple), Jan p72
Hi-railling through the East (O, multiple), Mar p74
Illinois Central in a garage (O, Lionel), Mar p90
Lionel's T-Rail showroom layout (T, O, Lionel), Nov p78
Milwaukee Road (O, Lionel), Sept p96
O gauge on a grand scale (O, multiple), Sept p74
O-72 layout, Dec p92
Readin', writin', and railroadin', Jan p92
Realistic Conrail track plan (O, Lionel), Feb p82
Train stops at the top of the stairs (O, Lionel), May p70
Updating an empire (O, Lionel), Jan p80
Union Pacific (O, Lionel), May p96
*Train stops at the top of the stairs, The, May p70
*Tricky toy train terms, Dec p196
Tripp, Mike
Capturing an era, July p66
*Truly golden anniversary, A, Feb p97
*226E dynasty, The, July p52
Trzonic, Stanley
New life for a tired F3, Sept p92
U-V-W-X-Y
*Union Pacific, May p96
*Unique in every sense, Feb p118
*Updating an empire, Jan p80
*What is T-Rail O, Nov p89
Z
*Zephyrs vs. Yankees, Feb p64
Zirul, Art
Jackie Gleason and the Lionel fiasco, Feb p81
Zollo, John
Build a better sound activation button, Nov p104